



# Autumn Leaf

In the fall, the leaves of the tree change color. Can you color the leaves to show it is fall?





# FALL SCAVENGER HUNT

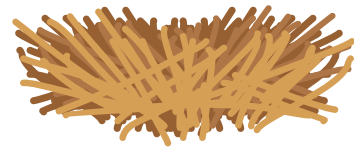
How many of these can you find during a walk in your neighborhood?  
Take pictures to share with friends and family.

Five different colors of leaves



Acorns. Do they all look the same?

Wildlife tracks: foot prints of animals.



Squirrel nests in the bare trees

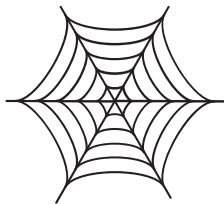
Flowers still blooming



Birds singing



A spiderweb



A fallen feather



Wild berries (Do not eat)



Different types of pinecones





# JOKES FOR THE DINNER TABLE

If pears grow on pear trees and apples on apple trees, where do turkeys grow?

Poultry

What type of tree likes to give high fives?

A palm tree

How can you identify a dogwood tree?

By its bark

What's a tree's favorite drink?

Root beer

Why do trees hate riddles?

Because it's too easy to get stumped

## TURKEYS NEED FORESTS

Wild Turkeys live in 49 states across the U.S. and all live in some type of forest ecosystem. The exact species, or type, of turkey in each state, varies but they all prefer a habitat that has some conifer (evergreen) trees and some hardwood trees (like oaks and maples). Turkeys fly well and like to roost (sleep) high in the trees to avoid predators. They will also forage, or look, for food high up in the trees.

Trees and turkey go together like turkey and mashed potatoes!

