

# Spring Affair News

Featuring everything you need to know about the 2025 Spring Affair Plant Sale!

## Spring Affair: April 24-26, 2025

Sandhills Global Event Center  
Currency Pavilion  
4100 N. 84th St., Lincoln



### Welcome to Spring Affair 2025!

The Spring Affair Plant Sale is a busy three days. To get the first pick of plants and enjoy a fun evening with plant people, register for the Preview Party & Preview Sale. This event is the Nebraska Statewide Arboretum's biggest fundraiser of the year, which means all ticket purchases support the Statewide Arboretum's tree planting, garden making and environmental education work that takes place across the state. Details about the event below, plus more tips to make the most out of your shopping experience on page 3.

#### Preview Party & Preview Sale

Thursday, April 24 | 5-9 p.m.

Enjoy cocktails (cash bar) at 5 p.m. a buffet dinner from 5:30 to 6:30 p.m. and then plant shopping at the Preview Sale from 6:30-9 p.m. **New this year: Preview Party ticket holders can start plant shopping at 6:30 p.m.; shoppers who buy tickets just for the Preview Sale will be admitted at 7 p.m.**

Tickets: \$45/NSA members, \$55/non-members. Member ticket includes one complimentary bar drink. Kids age 2 and under free.

#### Preview Sale Only

Thursday, April 24 | 7-9 p.m

Doors to the Preview Sale will open at 7 p.m. Enjoy a cocktail from the cash bar while you shop. Tickets: \$20/NSA members, \$25/non-members. Note: Advance ticket purchases prioritized; limited number of tickets will be sold at the door beginning at 7:30 p.m. Kids age 12 and under free.

#### FREE Admission Plant Sale

Friday, April 25, 2-6 p.m.

Saturday, April 26, 9 a.m. - 12 noon

Spring Affair is held in the Currency Pavilion. Parking is free.

#### Ticket Prices

##### Preview Party & Preview Sale

\$45/NSA members, \$55/non-members  
Table of 8: \$350

##### Preview Sale Only

\$20/NSA members, \$25 non-members

See below for details about how to purchase your tickets.



NEBRASKA STATEWIDE  
**Arboretum**  
PLANTNEBRASKA.ORG

### How to Purchase Tickets

1. Preview Party & Preview Sale tickets must be purchased in advance online at [plantnebraska.org/spring-affair](http://plantnebraska.org/spring-affair).
2. Preview Sale Only tickets can be purchased in advance online at [plantnebraska.org/spring-affair](http://plantnebraska.org/spring-affair) OR by filling out and mailing in the form below. *A limited number of Preview Sale Only tickets will be available for purchase at the door beginning at 7:30 p.m.*

#### Mail-In Preview Sale Registration Form

\_\_\_\_ Number of Preview Sale tickets; \$20 each for Arboretum members

\_\_\_\_ Number of Preview Sale tickets; \$25 for non-members

\_\_\_\_ Join now: \$55 for one year NSA membership

Name \_\_\_\_\_

Address \_\_\_\_\_

City, State, Zip \_\_\_\_\_

Telephone \_\_\_\_\_

Email \_\_\_\_\_

Make checks payable to NSA and send with this form to: Nebraska Statewide Arboretum  
P. O. Box 830964  
Lincoln, Nebraska 68583-0964

### What's Inside

A Message from the Executive Director	2
Garden Vendors	2
Tips for Successful Shopping	3
Become a Member of NSA	3
How to Read a Plant Label	4
Free Plant Talks	4
Plants for Sale	5-8
Why Scientific Names?	9
Why Plant a Smaller Tree?	10
Ready-to-go Garden Designs	11
Top-notch Pollinator Plants	12
Great Grasses	13
Watering Best Practices	14
Plants to Grow Your Confidence	15

Nonprofit Org.  
U.S. Postage  
PAID  
UNL

Nebraska Statewide Arboretum  
University of Nebraska  
P.O. Box 830964  
Lincoln, NE 68583-0964  
Phone: 402-472-2971  
[plantnebraska.org](http://plantnebraska.org)

## Mission

We plant Nebraska for healthy people, vibrant communities and a resilient environment.

## Board Members

Julie Zahn, President  
Syracuse

Edward Pohren, President-Elect  
Ashland

Carol Thomas, Treasurer  
Syracuse

Leah Meyer, Secretary  
Lincoln

John Cariotto  
Lincoln

Megan Fogue  
Lincoln

Bob Gruit  
Lincoln

Jeff Kennedy  
Gothenburg

Katie Markheim  
Gering

Karen Pesek  
Omaha

Dr. Richard Bischoff, Ex Officio  
IANR

John Erixson, Ex Officio  
Nebraska Forest Service

## Plant Prices

3" pot — \$4

4" pot — \$8

4" clematis — \$10

Quart — \$12

Round gallon pot — \$15

Any prices slightly higher, due to limited availability or higher production costs, will be clearly marked.

## Tree & Shrub Prices

Medium tube — \$7

Large tube — \$9

Quart — \$12

1 gallon — \$35-45

3 gallon — \$30-75

## A Message from the Executive Director

A new spring is upon us, which means a new gardening season with new hopes! I am pleased to welcome you to Spring Affair 2025. I am not a New Year's resolution person, but I am a new garden resolutions person, and now is the perfect time to set those goals. This year I'll be shopping at Spring Affair for a brand-new cut flower garden I will be planting this spring. I will also be on the lookout for good herbs to spice up our home-cooked meals this summer.

If you're not into setting resolutions at the beginning of the year, try out a gardening resolution that starts a few months in, and use this edition of *Spring Affair News* to inspire you! From our handy recommended plant lists to our plant talks scheduled during the event, you can find a lot of inspiration.

Spring Affair is very important to the Nebraska Statewide Arboretum because it is our largest fundraiser of the year. Your shopping dollars allow us to Plant Nebraska the rest of the year. From revitalizing main streets to replanting after diseases and storms, we walk alongside community members who are working to improve green space access across the state. So, thank you for shopping at Spring Affair! I also want to say thank you to the staff, volunteers, board members and sponsors who help us produce Spring Affair each year. Your contributions are immensely meaningful to me.

Best wishes to you as you live out your gardening resolutions this year! We'll be right there with you. Make sure to check out our other sales and events throughout the rest of the year to keep yourself inspired. You can find all the details at [plantnebraska.org](http://plantnebraska.org) or by following us on Facebook and Instagram.

Happy planting,



Hanna Pinneo  
Executive Director  
Nebraska Statewide Arboretum



## Thank You, Spring Affair Volunteers

It takes a village to run a plant sale with thousands of plants and thousands of gardeners. This endeavor simply would not be possible without the support of the 100+ volunteers who help make Spring Affair possible and to our more than 1,000 members, who help us Plant Nebraska for healthy people, vibrant communities and a resilient environment.

Interested in volunteering at Spring Affair? Visit [plantnebraska.org/spring-affair](http://plantnebraska.org/spring-affair) for more information.

We also thank Bluebird Nursery, Inc., our primary provider of 800+ varieties of high-quality plants. They are superstars!



## Don't Forget to Visit Our Vendor Booths

- Busy Bee Organics & Gifts
- Community Crops
- G Kravitz LLC
- Leaf Filter Gutter Protection
- Ryan's Market
- Sleepy Bees Lavender Farm
- Thermal King Windows

## Thank You, Great Plains Nursery

Spring Affair Sponsor



## Quick Tip

Planning to purchase more than one flat of plants? Bring a wagon or a cart to make transporting easier.



# Tips for Successful Spring Affair Shopping

Spring Affair can be a bit of a whirlwind. Here are some tips and tricks to make your shopping stress-free!

1. **Bring a wagon or a cart to make carrying your plants easier.**
2. Plan ahead, do some research and make a list of the plants you might like to purchase (if you are starting your garden from square one, see page 11 for three ready-made garden designs).
3. Be flexible and willing to substitute if what you are looking for is sold out.
4. Keep an eye out for our volunteers wearing Spring Affair tee shirts—they are happy to answer any questions (NSA staff wear turquoise shirts; you can ask us questions, too!).
5. Wear comfortable shoes and dress for temperamental spring weather (it could be anywhere from 45 to 85 degrees).
6. Be patient. The pavilion can get crowded, but there are plenty of plants for everyone!
7. Consider buying a ticket to the Preview Party & Preview Sale on Thursday to shop the best plant selection (see page 1 for details).
8. Use our plant sitters—you can leave your to-be-purchased plants with a sitter while you shop for more.
9. Stop at the plant arranging tables before the check-out and group your plants by pot size to make check-out more efficient and faster.
10. Don't forget to visit vendors selling gardening and garden-related items.
11. Attend a plant talk—see page 4 for topics and times.
12. Give yourself at least an hour to shop, browse vendors and check out.



Want more tips?  
Scan the QR code  
to listen to our  
special Spring Affair  
podcast episode.



## Get 10% Off Your Spring Affair Plant Purchases

Become a member of the Nebraska Statewide Arboretum!



As a member of NSA, not only do you get great benefits (like 10% off Spring Affair purchases and a 15% discount on NSA greenhouse sales), you also have the satisfaction of knowing you are contributing to good, green work that helps to Plant Nebraska for healthy people, vibrant communities and a resilient environment. The Nebraska Statewide Arboretum is a non-profit; we depend on membership support to Plant Nebraska!

### Membership Benefits

- 15% discount on NSA greenhouse plants and a 10% discount on Spring Affair plants
- Discounts on NSA events, programs and workshops
- Free or discounted admission to more than 300 botanical gardens and arboretums across North America
- Subscription to our monthly e-newsletter with news and tips for keeping your landscapes thriving
- Invitations to member-only events
- Free NSA horticultural publications, written by our experts solely for our members

If you'd like to become a member of NSA, simply fill out and mail in the form below or scan the QR code to visit the Membership page on our website: [plantnebraska.org](http://plantnebraska.org).



### Membership Form

Name: \_\_\_\_\_

Street: \_\_\_\_\_

City: \_\_\_\_\_ State: \_\_\_\_\_ Zip: \_\_\_\_\_

Email: \_\_\_\_\_

Phone: \_\_\_\_\_

Choose Membership Level:

- \$55 Friend       \$100 Patron       \$250 Contributor
- \$500 Leader       \$1,000 Champion


Make checks payable to: Nebraska Statewide Arboretum  
Mail to: P.O. Box 830964  
Lincoln, NE 68583-0964

# How to Read a Bench Card

All those laminated cards you see with the flats of plants convey valuable information that can help you decide if a plant is right for your yard. Here's a primer on deciphering the information and symbols on the cards:

1. The colored band at the top of many of the bench cards actually means something, in addition to making the cards look pretty! See the image (lower right) for the color key.
2. Both the plant's common name and the scientific name (Latin) are at the top of each bench card. See the box at the top of page 9 for an explanation of why we use scientific names.
3. This colored bar will tell you approximately how many hours of full sun the plant requires.
4. This colored bar will tell you how much moisture the plant typically needs.
5. This colored bar will tell you approximately how long and when the plant will bloom.
6. Look at this section for more details about the plants, including how tall and wide it will get at maturity, as well as a description of its blooms and additional care instructions.

**1** **2** **Wood's Blue aster**  
*Symphyotrichum 'Wood's Blue'*



**3** **4** **5**

**8** BLOOM COLOR Blue

0hrs 2hrs 4hrs 6hrs 8hrs

**SUNLIGHT**  
VeryDry Dry Moist Wet Submerged




**WATER NEEDS**  
Spring Summer Fall

**BLOOM TIME**

- Height: 8-12"
- Width: 18-24"
- compact, very floriferous dwarf aster selection
- showy, blue-purple flowers are a crucial late-season nectar and pollen source
- attractive mounds of clean-cut, fine-textured foliage all season long
- easy to grow and long-lived
- reliable fall bloomer

**6**

**7**

7. These symbols in the bottom right corner will tell you if the plant attracts pollinators, if it's native to the Great Plains, if it's particularly well-suited for a specialty garden (like a raingarden or a rock garden) and other helpful hints.
8. Look to the rectangle on the bottom of the card to see what color the blooms will be.

### Plant Card Color Code

- Full-Sun
- Shade/Part-Shade
- Temperennial
- Shrub
- Tree



## Free Plant Talks at Spring Affair

Make time to soak up some of the wisdom of our tree and plant experts at our free Spring Affair Plant Talks.

### Don't Pass by These Pollinator Plants Friday, April 25 at 3 p.m.

Join Bob Henrickson, NSA Horticulture Program Coordinator, for a walk about the sale as he points out some of the lesser-known pollinator plants that will look beautiful and benefit your local ecosystem by attracting a diverse variety of pollinating insects to your yard and garden.

### Celebrate Arbor Day with a Tree Walkabout Friday, April 25 at 4:30 p.m.

Take a guided tour with Justin Evertson, NSA Green Infrastructure Coordinator, through Spring Affair's tree and shrub collection and learn which species will work best in your landscape. Justin will explain the pros and cons of particular species and offer instructions on planting and tree care to help ensure that your tree will thrive in your landscape for generations.

### Make a More Waterwise Landscape Saturday, April 26 at 9:30 a.m.

A waterwise landscaping strategy in your own yard is one way you can make a difference in your local environment. If you're thinking about installing a rain garden or if you just simply want to conserve more water in your outdoor space, NSA Sustainable Landscape Specialist Sarah Buckley can offer some tips and point out the plants that will get your waterwise landscape off to a great start.

PRAIRIE GRASS • TURFGRASS

**STOCK SEED FARMS**

AND WILD FLOWER SEED

*Your Trusted Partner  
Since 1956*

- Premium Native Grass & Wildflowers
- Top Quality Turf & Buffalograss
- Wildlife Habitat & Foodplots
- Optimal Pollinator Habitat
- Soil Building Cover Crops
- High Value Pasture
- CRP Seed

Visit our **NEW** website for a complete list of products!

[www.stockseed.com](http://www.stockseed.com)

**2025 CATALOG  
GET YOUR COPY NOW!**



# SPRING AFFAIR APRIL 24-26, 2025

3" pot - \$4 / 4" pot - \$8 / 4" clematis - \$10 / quart - \$12 / round gal. pot - \$15

ALL PLANTS SUBJECT TO AVAILABILITY

## Plants for Sun

### Plants for Sun

Scientific Name	Common Name	Color	Blooms	Inches High
ACANTHUS SPINOSUS	bear's breeches	MAUVE	JUNE-AUG	36-48
ACHILLEA CORONATION GOLD	yarrow	YELLOW	MAY-JUNE	30-36
ACHILLEA MILLEFOLIUM CASSIS	yarrow	RED	MAY-JUNE	21-20
ACHILLEA MILLEFOLIUM PAPRIKA	yarrow	RED	MAY-JUNE	18-24
ACHILLEA MOONSHINE	yarrow	YELLOW	MAY-JUNE	18
ACHILLEA SUMMER PASTELS	yarrow	PASTEL	MAY-JUNE	18-24
AGASTACHE 'BLUE FORTUNE'	hyssop	PURPLE	JULY-AUG	36-48
AGASTACHE BOLERO	hyssop	PURPLE	JULY-AUG	14-16
AGASTACHE CANA SINNING	hyssop	PURPLE	JULY-AUG	12-18
AGASTACHE RUPESTRIS	hyssop	ORANGE	AUG-SEPT	18-24
ALCEA ROSEA SINGLE MIX	hollyhock	X-MIXED	JUNE-AUG	60-96
ALCEA ROSEA WATCHMAN	hollyhock	MAROON	JUNE-AUG	60-84
ALCEA RUGOSA	hollyhock	YELLOW	JULY-AUG	48-108
ALLIUM CERNUUM	nodding onion	PINK	JULY-AUG	12-18
ALLIUM MILLENIUM	onion	PURPLE	JULY-AUG	15-18
ALLIUM SEN. MONGOLIAN GEM	onion	PINK	AUG-SEPT	15-18
ALLIUM STELLATUM	prairie onion	PINK	JULY-AUG	8-15
ALLIUM SUMMER BEAUTY	onion	PINK	JUNE-JULY	15
AMORPHA CANESCENS	leadplant	BLUE	JUNE-JULY	48
AMORPHA NANA	dwarf leadplant	BLUE	MAY-JUNE	12-36
AMSONIA HUBRICTII	bluestar	BLUE	APR-MAY	36
AMSONIA TABERNAEMONTANA	bluestar	BLUE	MAY	36
ANAPHALIS MARGARITACEA	everlasting	WHITE	JULY-AUG	12-36
ARTEMISIA LUD. SILVER KING	wormwood	SILVER	AUG-SEPT	24-36
ARTEMISIA STEL. SILVER BROCADE	wormwood	SILVER	JUNE-JULY	12-18
ASCLEPIAS INCARN. CINDERELLA	milkweed	PINK	JULY-AUG	24-48
ASCLEPIAS INCARN. ICE BALLET	milkweed	WHITE	JULY-AUG	40
ASCLEPIAS TUBEROSA	milkweed	ORANGE	JUNE-JULY	24-36
ASTER ALERT	aster	RED	AUG-SEPT	12-15
ASTER ERICOIDES SNOW FLURRY	aster	WHITE	SEPT-OCT	4-8
ASTER FENDLERI MY ANTONIA	aster	WHITE	AUG-SEPT	12
ASTER LAEVIS BLUEBIRD	aster	BLUE	SEPT-OCT	30-36
ASTER LATERI. LADY IN BLACK	aster	WHITE	AUG-SEPT	36
ASTER NOV. ANGL ALMA POTSCHKE	aster	PINK	SEPT-OCT	30-48
ASTER OBLONG. OCTOBER SKIES	aster	BLUE	SEPT-OCT	24-36
ASTER OBLONG. RAYDON'S FAVORITE	aster	PURPLE	SEPT-OCT	24-26
ASTER DUMOSUS WOODS PINK	aster	PINK	AUG-SEPT	12-18
ASTER DUMOSUS WOODS PURPLE	aster	PURPLE	AUG-SEPT	12-18
AURINIA SAXATILIS	basket of gold	YELLOW	APR-MAY	6-12
BAPTISIA LACTEA	indigo white	WHITE	JUNE	36-48
BAPTISIA MINOR	indigo blue	BLUE	MAY	36
BELAMCANDA CHINENSIS	blackberry lily	ORANGE	JULY-AUG	24-36
BERLANDIERA LYRATA	chocolate flower	YELLOW	JUNE-JULY	12-24
BOLTONIA ASTEROIDES SNOWBANK	boltonia	WHITE	AUG-SEPT	60-72
BUDDLEJA DAVIDII BLACK KNIGHT	butterfly bush	PURPLE	JUNE-JULY	72-96
BUDDLEJA DAVIDII ROYAL RED	butterfly bush	RED	JUNE-JULY	72-96
CALAMINTHA NEPETA SSP. NEPETA	catmint	PURPLE	JUNE-SEPT	12-18
CALLIRHOE ALC. LOGAN CALHOUN	poppy mallow	WHITE	JUNE	6-12
CALLIRHOE INVOLUCRATA	poppy mallow	PINK	JUNE-JULY	6-12
CARYOPTERIS X CLAN. FIRST CHOICE	blue mist spirea	BLUE	SEPT-OCT	24-36
CEANOETHUS AMERICANUS	New Jersey tea	WHITE	MAY-JUNE	36-48
CENTRANTHUS RUB. PRETTY BETSY	Jupiter's beard	RED	MAY-JUNE	18-36
CERASTIUM TOMENTOSUM	snow in summer	WHITE	JUNE	6-12
CHRYSANTHEMUM CLARA CURTIS	mum	PINK	SEPT-OCT	14
CHRYSANTHEMUM MARY STOKER	mum	YELLOW	AUG-SEPT	24-30
CLEMATIS BLUE EXPLOSION	clematis	PURPLE	MAY-JUNE	84-108
CLEMATIS GUERNSEY CREAM	clematis	WHITE	MAY-JUNE	72-96
CLEMATIS GYPSY QUEEN	clematis	PURPLE	JULY-SEPT	72-96
CLEMATIS INTEG. MONG. BELLS	clematis	MIXED	MAY-JUNE	10-16
CLEMATIS INTEG. ROUGUCHI	clematis	PURPLE	MAY-JUNE	72-96
CLEMATIS JACKMANII	clematis	PURPLE	JULY	72-96
CLEMATIS JOHN PAUL 11	clematis	PINK	JULY-AUG	96
CLEMATIS KRYSPIA	clematis	PINK	JUNE-JULY	72-96
CLEMATIS NELLY MOSER	clematis	ROSE	MAY-JUNE	72096
CLEMATIS NIOBE	clematis	RED	MAY-JUNE	72-96
CLEMATIS OMOSHIRO	clematis	PINK	MAY-JUNE	72-96
CLEMATIS PHILU	clematis	PINK	JULY-AUG	72-96
CLEMATIS ROUGE CARDINAL	clematis	RED	JUNE-JULY	72-96
CLEMATIS TEX. PRINCESS DIANA	clematis	PINK	JUNE-JULY	72-96
CLEMATIS THE PRESIDENT	clematis	PURPLE	MAY-JUNE	96-120
CLEMATIS VILLE DE LYON	clematis	PURPLE	JUNE-JULY	120-240
CLEMATIS VITICELLA POLISH SPIRIT	clematis	PURPLE	JUNE-JULY	120
CLEMATIS WARSAW NIKE	clematis	PURPLE	JUNE-JULY	96-144
COREOPSIS AURICULATA NANA	coreopsis	YELLOW	MAY-JUNE	6-9

Scientific Name	Common Name	Color	Blooms	Inches High
COREOPSIS JETHRO TULL	coreopsis	YELLOW	JUNE-JULY	12-18
COREOPSIS LANCEOLATA	coreopsis	YELLOW	MAY-JUNE	12-24
COREOPSIS PALMATA	coreopsis	YELLOW	JUNE-JULY	18-30
COREOPSIS VERT MOONBEAM	coreopsis	YELLOW	JUNE-JULY	18-24
COREOPSIS VERTICILLATA ZAGREB	coreopsis	YELLOW	MAY-JUNE	12-18
CYNARA CARDUNCULUS	cardo	PURPLE	AUG-SEPT	36-72
DALEA PURPUREA STEPHANIE	prairie clover	PURPLE	JUNE-JULY	12-36
DIANTHUS GRAT. FIREWITCH	dianthus	PINK	MAY	6-12
DRACOCEPHALUM ARG. FUJI BLUE	false dragonhead	BLUE	MAY-JUNE	8-12
DRACOCEPHALUM RUYSCHIANA	false dragonhead	BLUE	JUNE-JULY	6-12
ECHINACEA ANGUSTIFOLIA	coneflower	PINK	JUNE	12-24
ECHINACEA CHEYENNE SPIRIT	coneflower	X-MIXED	JUNE-JULY	12-30
ECHINACEA EVAN SAUL SUNDOWN	coneflower	L. PINK	JUNE-JULY	12-18
ECHINACEA PALLIDA	coneflower	PINK	JUNE-JULY	12-30
ECHINACEA PARADOXA	coneflower	YELLOW	JUNE-JULY	12-30
ECHINACEA PURPUREA ALBA	coneflower	WHITE	JUNE-JULY	36
ECHINACEA PURP. GREEN TWISTER	coneflower	X-MIXED	JUNE-JULY	36-48
ECHINACEA PURPUREA MAGNUS	coneflower	PINK	JUNE-JULY	30-36
ECHINACEA PURP. MELLOW YELLOWS	coneflower	YELLOW	JUNE-JULY	24-30
ECHINACEA PURP. PRAIRIE GIANT	coneflower	PINK	JUNE-JULY	18-24
ECHINACEA SOMB. ADOBE ORANGE	coneflower	ORANGE	JUNE-JULY	18-20
ECHINACEA SOMB. BAJA BURGUNDY	coneflower	RED	JUNE-JULY	18-20
ECHINACEA TENNESSEENSIS HYBRIDS	coneflower	PINK	JUNE-JULY	12-30
ECHINOPS RITRO	globethistle	BLUE	AUG-SEPT	36-48
ERIOGONUM UMB. KANNAH CREEK	sulphur flower	YELLOW	MAY-JUNE	12-15
ERYNGIUM YUCCIFOLIUM	rattlesnake master	BLUE	JULY-AUG	24
EUPATORIUM DUBIUM LITTLE JOE	Joe Pye plant	PURPLE	AUG-SEPT	24-36
EUPATORIUM MACULATUM GATEWAY	Joe Pye plant	RED	JULY-AUG	72
EUPHORBIA MYRSINITES	mrytle spurge	YELLOW	APR-MAY	12-18
EUPHORBIA POLYCHROMA	cushion spurge	YELLOW	APR-MAY	6-12
FILIPENDULA RUBRA VENUSTA	queen of prairie	PINK	JUNE	72-96
GAILLARDIA A. AMBER WHEELS	blanket flower	YELLOW	JUNE-SEPT	30
GAILLARDIA ARIS. ARIZ. RED SHADES	blanket flower	RED	JUNE-SEPT	8-12
GAILLARDIA ARISTATA ARIZONA SUN	blanket flower	ORANGE	JUNE-SEPT	12-15
GAILLARDIA A. MESA PEACH	blanket flower	PEACH	JUNE-SEPT	10-14
GAILLARDIA GRAND. ARIZ. APRICOT	blanket flower	ORANGE	JUNE-SEPT	8-12
GAILLARDIA GRAND. KOBOLD GOBLIN	blanket flower	RED	JUNE-SEPT	8-12
GEUM COCCINEUM KOI	avens	ORANGE	MAY-JUNE	12-18
GEUM TRIFLORUM	prairie smoke	PINK	APR-MAY	12-15
GYPSOPHILA REPENS ALBA	baby's breath	WHITE	MAY-JUNE	4-8
HELENIUM MARIACHI SALSA	Helen's flower	ORAN/RED	JULY-AUG	18-20
HELENIUM ROTGOLD	Helen's flower	RED	JULY-AUG	36-48
HELIOPSIS HEL. BLEEDING HEARTS	ox-eye	RED	JULY-AUG	36-42
HELIOPSIS HEL. BURNING HEARTS	ox-eye	X-MIXED	JULY-AUG	36-48
HELIOPSIS HEL. SUMMER NIGHTS	sunflower	YELLOW	JUNE-JULY	36-48
HEPTACODIUM MICONOIDES	seven-son flower	WHITE	SEPT	180-240
HIBISCUS CRANBERRY PUNCH	hibiscus	RED	JULY-AUG	24-26
HIBISCUS LORD BALTIMORE	hibiscus	RED	JULY-AUG	48-60
HIBISCUS MOS. DISCO BELLE PINK	hibiscus	PINK	JULY-AUG	24-30
HIBISCUS MOS. DISCO BELLE WHITE	hibiscus	WHITE	JULY-AUG	24-30
HIBISCUS MOS. PINK CLOUDS	hibiscus	PINK	JULY-AUG	48-60
IPOMOPSIS AGGREGATA	scarlet rocket	RED	JULY-AUG	48
IRIS ENSATA VARIEGATA	iris	PURPLE	JUNE	20
IRIS PALLIDA AUREA VARIEGATA	iris	LAVENDER	JUNE	24-36
IRIS SIBIRICA BUTTER & SUGAR	iris	YELLOW	JUNE	28
IRIS SIBIRICA CAESAR'S BROTHER	iris	PURPLE	MAY	36
IRIS SIBIRICA KABOOM	iris	PURPLE	MAY	30-34
KNAUTIA MACEDON. MARS MIDGET	knautia	RED	JULY	24-36
KNIPHOFIA CAULESCENS	red hot poker	RED	JULY-AUG	30-36
LEUCANTHEMUM BECKY	daisy	WHITE	JULY-AUG	36-48
LEUCANTHEMUM SUPER. SNOWCAP	daisy	WHITE	JULY-AUG	12-18
LEUCANTHEMUM SWEET DAISY BIRDY	daisy	WHITE	JULY-AUG	48
LIATRIS ASPERA	blazing star	PINK	AUG-SEPT	12-36
LIATRIS LIGULISTYLIS	blazing star	PURPLE	JULY-AUG	42
LIATRIS PUNCTATA	blazing star	PURPLE	JULY-AUG	12-36
LIATRIS PYCNOSTACHYA EUREKA	blazing star	PURPLE	JULY-AUG	60
LIATRIS SPICATA ALBA	blazing star	WHITE	JULY-AUG	36-48
LIATRIS SPICATA FLORISTAN VIOLET	blazing star	PURPLE	JULY-AUG	36-48
LIATRIS SPICATA KOBOLD	blazing star	PURPLE	JULY-AUG	24
LILIUM AURELIAN HYBRIDS	lily	X-MIXED	JULY	36-60
LIMONIUM LATIFOLIUM	sea lavender	LAVENDER	JULY-AUG	30
LINUM PERENNE LEWISII	flax	BLUE	MAY-JUNE	12-24
LONICERA SEMP. BLANCHE SANDMAN	honeysuckle	X-MIXED	MAY-JUNE	120-240
LONICERA SEMP. JOHN CLAYTON	honeysuckle	YELLOW	MAY-JUNE	72-144
LONICERA SEMP. MAGNIFICA	honeysuckle	RED	MAY-JUNE	48-96
LONICERA SEMP. MAJOR WHEELER	honeysuckle	ORANGE	MAY-JUNE	96
LYCHNIS CORONARIA BLOOD RED	catchfly	RED	MAY-JUNE	24
MIMULUS RINGENS	monkeyflower	PURPLE	JUNE-JULY	12-36

## Plants for Sun

Scientific Name	Common Name	Color	Blooms	Inches High
MONARDA BUBBLEGUM BLAST	beebalm	PINK	JULY-AUG	24
MONARDA DIDYMA RASPBERRY WINE	beebalm	RED	JULY-AUG	24-48
MONARDA JACOB CLINE	beebalm	RED	JULY-AUG	48-60
MONARDA MARSHALL'S DELIGHT	beebalm	PINK	JULY-AUG	36
NEPETA FAASSENII BLUE WONDER	catmint	BLUE	MAY-JUNE	24
NEPETA FAASSENII JUNIOR WALKER	catmint	LAVENDER	MAY-JUNE	16-18
NEPETA LITTLE TRUDY	catmint	PURPLE	MAY-JUNE	8-12
OENOTHERA MACROCARPA	evening primrose	YELLOW	MAY-JUNE	8-12
OENOTHERA M. S. SILVER BLADE	evening primrose	YELLOW	MAY-JUNE	12-36
OENOTHERA M. SUBSP. FREMONTII	evening primrose	YELLOW	MAY-JUNE	10
OENOTHERA PILOSELLA YELLA FELLA	evening primrose	YELLOW	JUNE-JULY	12-16
ORIGANUM LAEVIG. HERRENHAUSEN	ornam. oregano	PINK/RED	AUG-SEPT	24
ORIGANUM LIBANOTICUM	ornam. oregano	LAVENDER	AUG-SEPT	10-15
ORIGANUM X AMETHYST FALLS	oranam. oregano	X-MIXED	AUG-SEPT	8-12
PAEONIA LACTI. SARAH BERNHARDT	peony	PINK	JUNE	35
PAEONIA FLAME	peony	PINK	MAY	28-36
PAEONIA RED CHARM	peony	RED	MAY	30-36
PAPAVER ORIENTALE ALLEGRO	poppy	RED	JUNE	12-18
PAPAVER ORIENT. BEAUTY LIVERMERE	poppy	RED	JUNE	24-36
PAPAVER ORIENTALE PATTYS PLUM	poppy	PLUM	JUNE	24
PAPAVER ORIENT. PRINCE OF ORANGE	poppy	ORANGE	JUNE	12-18
PAPAVER ORIENT. ROYAL WEDDING	poppy	WHITE	JUNE	12-18
PARTHENIUM INTEGRIFOLIUM	wild quinine	WHITE	JUNE-JULY	24-48
PENSTEMON BARB. (JINGLE BELLS)	penstemon	RED	MAY-JUNE	36
PENSTEMON DIGITALIS HUSKER RED	penstemon	WHITE	MAY-JUNE	24-36
PENSTEMON GRANDIFLORUS	penstemon	X-MIXED	MAY-JUNE	24-48
PENSTEMON GRAND. WAR AXE	penstemon	X-MIXED	MAY-JUNE	24-48
PENSTEMON PINIFOLIUS	penstemon	RED	MAY-JUNE	18-24
PENSTEMON PRAIRIE DUSK	penstemon	PURPLE	MAY-JUNE	18
PENSTEMON STRICTUS	penstemon	PURPLE	MAY-JUNE	24-26
PENSTEMON X MEXICALI RED ROCKS	penstemon	RED	MAY-JULY	18
PEROVSKIA ATRIP. LITTLE SPIRE	sage	BLUE	JULY-AUG	24
PHLOX FOREVER PINK	phlox	PINK	JULY	12-18
PHLOX PANICULATA DAVID	phlox	WHITE	JULY	24-48
PHLOX PANICULATA LAURA	phlox	PINK	JULY-AUG	24-36
PHLOX P. SUPER KA-POW CORAL	phlox	PINK	JULY	18
PHLOX P. SUPER KA-POW WHITE	phlox	WHITE	JULY	18
PHLOX SUBULATA BLUE	phlox	BLUE	APR-MAY	4
PHLOX SUBULATA CANDY STRIPE	phlox	WH/PINK	APR-MAY	4
PHLOX SUBULATA PINK	phlox	PINK	APR-MAY	4
PHLOX SUBULATA RED	phlox	RED	APR-MAY	4
PHLOX SUBULATA WHITE	phlox	WHITE	APR-MAY	4
PHYSOSTEGIA VIRGINIANA VIVID	obedient plant	PINK	AUG-SEPT	24
PLATYCODON GRAND. FUJI WHITE	balloon flower	WHITE	JULY-AUG	18-24
PLATYCODON GRAND. MARIESII	balloon flower	BLUE	JULY-AUG	12-30
PULSATILLA PATENS	pasque flower	PURPLE	APR-MAY	6
PULSATILLA V. PAPAGENO	pasque flower	X-MIXED	APR-MAY	6
PULSATILLA V. RUBRA	pasque flower	RED	APR-MAY	10
PYCNANTHEMUM MUTICUM	mountain mint	PINK	JULY-AUG	12-36
PYCNANTHEMUM VIRGINIANUM	mountain mint	WHITE	JULY-AUG	24-36
RATIBIDA COLUMNIFERA RED	Mexican hat	RED	JUNE-JULY	48
RATIBIDA COLUMNIFERA YELLOW	Mexican hat	YELLOW	JUNE-JULY	48
RATIBIDA PINNATA	gray coneflower	YELLOW	JUNE-JULY	36-60
ROSA MINIATURE ASSORTMENT	rose	X-MIXED	MAY-OCT	12
RUDBECKIA AMERICAN GOLD RUSH	black-eyed Susan	YELLOW	JULY-SEPT	22-26
RUDBECKIA FULGIDA VAR. SPECIOSA	black-eyed Susan	YELLOW	JULY-AUG	36
RUDBECKIA HIRTA PRAIRIE SUN	black-eyed Susan	YELLOW	JULY-AUG	36
RUDBECKIA MAXIMA	black-eyed Susan	YELLOW	JUNE-JULY	60-84
RUDBECKIA NITIDA HERBSTONNE	black-eyed Susan	YELLOW	JULY-AUG	24-36
RUDBECKIA SUBTOMENTOSA	black-eyed Susan	YELLOW	AUG-SEPT	36-72
RUDBECKIA TRILOBA PRAIRIE GLOW	black-eyed Susan	YELLOW	AUG-SEPT	24-36
RUELLIA HUMILIS	wild petunia	BLUE	JUNE-JULY	18-24
SALVIA AZUR. SUB. PITCHER NEKAN	blue sage	BLUE	AUG-SEPT	48
SALVIA GREGGII	autumn sage	PINK	AUG-SEPT	24-36
SALVIA NEMOROSA CARDONNA	sage	PURPLE	MAY-JUNE	18
SALVIA NEM. DWARF BLUE QUEEN	sage	PURPLE	MAY-JUNE	14
SALVIA NEMOROSA MAY NIGHT	sage	PURPLE	MAY-JUNE	18
SALVIA NEMOROSA ROSE MARVEL	sage	PINK	JUNE-SEPT	10-12
SAPONARIA OCYMOIDES	soapwort	PINK	MAY-JUNE	8
SCUTTELLARIA RES. SMOKY HILLS	skullcap	BLUE	MAY-JUNE	12
SEDUM AUTUMN FIRE	sedum	DEEP PINK	AUG-SEPT	24-30
SEDUM BERTRAM ANDERSON	sedum	PINK	AUG-SEPT	6-8
SEDUM D. HIMALAYAN SKIES	sedum	PINK	AUG-SEPT	2
SEDUM REFLEXUM ANGELINA	sedum	YELLOW	JUNE	3-5
SEDUM REFLEXUM BLUE SPRUCE	sedum	YELLOW	JUNE	6-9
SEDUM SCH. BLUT DRAGON'S BLOOD	sedum	RED	AUG-SEPT	4-6
SEDUM SPECTABLE NEON	sedum	PINK	AUG-SEPT	12-24

## Plants for Sun

Scientific Name	Common Name	Color	Blooms	Inches High
SEDUM X CZAR'S GOLD	sedm	YELLOW	AUG-SEPT	6
SEMPERVIVUM ARACH. COBWEB	hens & chicks	PINK	JULY-AUG	3-4
SEMPERVIVUM C. MONST. RED TIPS	hens & chicks	RED	JULY-AUG	4
SEMPERVIVUM CALC. MRS. GIUSEPPI	hens & chicks	GRAY/RED	JULY-AUG	4
SEMPERVIVUM CLASSIC	hens & chicks	GRAY/RED	JULY-SEPT	2-3
SENNA HEBECARPA	senna	YELLOW	JULY-AUG	48-72
SILENE REGIA	catchfly	RED	JULY-AUG	36
SOLIDAGO CROWN OF RAYS	goldenrold	YELLOW	JULY-AUG	18-24
SOLIDAGO RUGOSA FIREWORKS	goldenrod	YELLOW	AUG-SEPT	30-36
SOLIDAGO WICHITA MOUNTAINS	goldenrod	YELLOW	AUG-SEPT	24-36
STACHYS BYZANTINA SILVER CARPET	lambs ears	SILV/GRAY	NO BLOOM	6-8
STACHYS MONIERI HUMMELO	betony	PURPLE	JUNE-JULY	18-24
STOKESIA LAEVIS	stokes aster	BLUE	JUNE-JULY	12-24
TANACETUM NIVEUM	tansy	WHITE	MAY-JUNE	18-24
THERMOPSIS VILLOSUM	false lupine	YELLOW	JUNE	30-60
TRADESCANTIA BLUE AND GOLD	spiderwort	BLUE	MAY-JUNE	24
TRADESCANTIA THARPII	spiderwort	X-MIXED	APR-MAY	12
VERNONIA LETTERMANII	ironweed	PURPLE	JULY-AUG	24-36
VERONICA LONGIFOLIA FIRST LOVE	veronica	PINK	JULY-SEPT	12
VERONICA SNOWMASS	veronica	WHITE	MAY-JUNE	2
VERONICA SPICATA PURPLEICIOUS	veronica	PURPLE	MAY-JUNE	12-24
VERONICA WHITEWATER	veronica	WHITE	APR-MAY	4-6
VERONICASTRUM ALBO-ROSEA	culvers root	WHITE	JUNE-JULY	36-48

## Plants for Shade or Part-shade

Scientific Name	Common Name	Color	Blooms	Inches High
ACONITUM CARMICHAELII ARENDSII	monkshood	BLUE	OCT-NOV	36-48
ACONITUM ROYAL FLUSH	monkshood	BLUE	OCT-NOV	24-28
ACTAEA PACHYPODA	baneberry	WHITE	MAY-JUNE	18-30
ACTAEA RACEMOSA	black cohosh	WHITE	JUNE-JULY	48-72
AJUGA REPTANS BURGUNDY GLOW	ajuga	BLUE	MAY-JUNE	6-9
AJUGA REPTANS BLACK SCALLOP	ajuga	PURPLE	MAY-JUNE	4-6
AJUGA TENORI CHOCOLATE CHIP	ajuga	PURPLE	MAY-JUNE	4-6
ALCHEMILLA MOLLIS	lady's mantle	YELLOW	MAY-JUNE	18
ANEMONE CINDERELLA	anemone	PINK	JULY-AUG	12-18
ANEMONE HUP. SEPTEMBER CHARM	anemone	PINK	AUG-SEPT	20-28
ANEMONE HYB. HONORINE JOBERT	anemone	WHITE	AUG-SEPT	36-48
ANEMONE HYBRIDA WHIRLWIND	anemone	WHITE	AUG-SEPT	36-48
ANEMONE MULTIFIDA RUBRA	anemone	RED	MAY-JUNE	12-18
ANEMONE SYLVESTRIS	anemone	WHITE	APR-MAY	12-18
ANEMONELLA THALICTROIDES	thalictrum	WHTIE	APR-MAY	6-10
AQUILEGIA BIEDERMEIER	columbine	X-MIXED	APR-MAY	12
AQUILEGIA BLUEJAY	columbine	BLUE	APR-MAY	30
AQUILEGIA CANADENSIS	columbine	X-MIXED	APR-MAY	12-24
AQUILEGIA CHRYSANTHA	columbine	YELLOW	APR-MAY	30
AQUILEGIA CRIMSON STAR	columbine	PINK	APR-MAY	24-30
AQUILEGIA NORA BARLOW	columbine	PINK	APR-JUNE	24-28
ARUNCUS AETHUSIFOLIUS	goatsbeard	WHITE	MAY-JUNE	8
ARUNCUS DIOICUS KNEIFFI	goatsbeard	WHITE	MAY	24-36
ASTILBE CHINENSIS PUMILA	astilbe	PINK	MAY	12-18
ASARUM CANADENSIS	wild ginger	RED	MAY	12
ASTILBE CHINENSIS VISIONS IN RED	astilbe	RED	JUNE-JULY	12-18
ASTILBE X ARENDSII FANAL	astilbe	RED	JULY	24
ASTILBE X JAPONICA DEUTSCHLAND	astilbe	WHITE	MAY-JUNE	24
BERGENIA CORDIFOLIA	bergenia	PINK	APR-MAY	12-18
BERGENIA PURPURASCENS	bergenia	PINK	APR-MAY	15
BRUNNERA MACROPH. JACK FROST	brunnera	BLUE	APR-MAY	12-18
CALLICARPA DICHOTOMA	beautyberry	PURPLE	SEPT-OCT	36-60
CAMPANULA CARPatica BLUE CLIPS	bellflower	BLUE	JUNE-JULY	8
CAMPANULA CARP. WHITE CLIPS	bellflower	WHITE	JUNE-JULY	8
CAMPANULA GLOM. JOAN ELLIOT	bellflower	BLUE	JUNE-JULY	12-18
CAMPANULA GLOMERATA SUPERBA	bellflower	PURPLE	JUNE-JULY	20
CAMPANULA PORTENSCHLAGIANA	bellflower	BLUE	JUNE-JULY	3-4
CAMPANULA ROTUNDIFOLIA	bellflower	BLUE	JUNE-JULY	12-18
CERATOSTIGMA PLUMBAGINOIDES	plumbago	BLUE	JULY-SEPT	6-8
CHELONE GLABRA	turtlehead	WHITE	AUG-SEPT	24-36
CHELONE GLABRA BLACK ACE	turtlehead	WHITE	AUG-SEPT	26-60
CHELONE LYONII HOT LIPS	turtlehead	PINK	AUG-SEPT	24-48
CONOCLINIUM COELESTINUM BLUE	mist flower	BLUE	AUG-SEPT	36
CONVALLARIA MAJALIS	lily of the valley	WHITE	APRIL	6-12
CORYDALIS LUTEA	corydalis	YELLOW	MAY-JUNE	12-18
CORYDALIS OCHROLEUCA	corydalis	WHITE	JUNE-JULY	12-24
DELPHINEUM BLACK KNIGHT	delphinium	BLUE	MAY-JUNE	36-60

## Plants for Shade or Part-shade

Scientific Name	Common Name	Color	Blooms	Inches High
DELPHINIUM BLUE BIRD	delphinium	BLUE	JUNE	72
DELPHINIUM GRAND. SUMMER BLUES	delphinium	BLUE	JUNE	12
DELPHINIUM GR. SUMMER NIGHTS	delphinium	BLUE	JUNE	12
DELPHINIUM MAGIC FOUNTAINS	delphinium	X-MIXED	JUNE	24-36
DICENTRA EXIMA	bleeding heart	PINK	APR-MAY	12-18
DICENTRA FORM. KING OF HEARTS	bleeding heart	PINK	MAY-JUNE	10-18
DICENTRA FORMOSA LUXURIANT	bleeding heart	RED	MAY-JUNE	10-18
DICENTRA SPECTABILIS	bleeding heart	PINK	APR-MAY	10-18
DICENTRA SPECTABILIS ALBA	bleeding heart	WHITE	APRIL	10-18
EPIMEDIUM SUPHUREUM	barrenwort	YELLOW	APRIL	9-18
EUPATORIUM RUGOSUM CHOCOLATE	Joe Pye plant	WHITE	SEPT-OCT	24-36
GALIUM ODORATUM	sweet woodruff	WHITE	APR-MAY	8-12
GERANIUM CANT. BOKOVO	cranesbill	WHITE	MAY-JUNE	6-12
GERANIUM CANTA.KARMINA	cranesbill	RED	MAY-JUNE	6-12
GERANIUM CINEREUM BALLERINA	cranesbill	PINK	APR-MAY	6-12
GERANIUM JOHNSON'S BLUE	cranesbill	BLUE	JUNE-JULY	12-18
GERANIUM MACRO. BEVAN'S VARIETY	cranesbill	PINK	APR-MAY	8-12
GERANIUM MACULATUM	cranesbill	BLUE	APR-MAY	6-12
GERANIUM PRATENSE DARK REITER	cranesbill	X-MIXED	APR-MAY	16-24
GERANIUM ROZANNE	cranesbill	BLUE	MAY-JUNE	12-18
GERANIUM SANGUINEUM	cranesbill	PURPLE	MAY-JUNE	12-18
GILLENIA TRIFOLIATA	bowmans root	WHITE	MAY-JUNE	24-36
HELLEBORUS X HYBRIDUS	lenten rose	X-MIXED	APR-MAY	12-18
HEMEROCALLIS BELA LUGOSI	daylily	X-MIXED	JUNE-JULY	30-36
HEMEROCALLIS BERRUB	daylily	X-MIXED	JUNE-JULY	18-21
HEMEROCALLIS HAPPY RETURNS	daylily	YELLOW	JUNE-JULY	18
HEMEROCALLIS LITTLE GRAPETTE	daylily	PURPLE	JUNE-JULY	12
HEMEROCALLIS MIGHTY CHESTNUT	daylily	ORANGE	JUNE-JULY	30-36
HEMEROCALLIS NIGHT EMBERS	daylily	RED	JUNE-JULY	30-36
HEMEROCALLIS PARDON ME	daylily	PINK	JUNE-JULY	12-18
HEMEROCALLIS ROSY RETURNS	daylily	PINK	JUNE-JULY	12-14
HEMEROCALLIS STELLA SUPREME	daylily	YELLOW	JUNE-JULY	14
HEMEROCALLIS STRAWBERRY CANDY	daylily	PINK	JUNE-JULY	26
HEMEROCALLIS TIGER BLOOD	daylily	X-MIXED	JUNE-JULY	25-27
HEUCHERA AMERICANA DALE'S VAR.	coralbell	PINK	MAY-JUNE	12-24
HEUCHERA CANYON DUET	coralbell	X-MIXED	JUNE	4-6
HEUCHERA CARAMEL	coralbell	WHITE	JUNE	10
HEUCHERA CITRONELLE	coralbell	WHITE	JUNE	10
HEUCHERA ELECTRIC PLUM	coralbell	PINK	JULY-AUG	8-12
HEUCHERA FOREVER RED	coralbell	WHITE	AUG-SEPT	6-10
HEUCHERA MELTING FIRE PBR	coralbell	WHITE	JUNE-JULY	8-18
HEUCHERA SANGUINEA RUBY BELLS	coralbell	RED	JUNE	16
HUECHERA SANG. SNOW ANGEL	coralbell	PINK	MAY-JUNE	8-12
HEUCHERA SILVER SCROLLS	coralbell	WHITE	JUNE-JULY	8-24
HOSTA ABIQUA DRINKING GOURD	hosta	WHITE	JUNE-JULY	18-24
HOSTA BLUE ANGEL	hosta	WHITE	JULY-AUG	24-36
HOSTA BLUE MOUSE EARS	hosta	PURPLE	JULY-AUG	6-12
HOSTA BROTHER STEFAN	hosta	WHITE	MAY-JUNE	28
HOSTA CURLY FRIES	hosta	PURPLE	JUNE	5
HOSTA DANCING QUEEN	hosta	PURPLE	JULY	18
HOSTA DREAM QUEEN	hosta	WHITE	JULY	20-25
HOSTA EARTH ANGEL	hosta	PURPLE	JUNE	30-36
HOSTA FIRST FROST	hosta	PURPLE	JULY-AUG	16
HOSTA FORTUNEI PATRIOT	hosta	PURPLE	JULY-AUG	12-18
HOSTA GREAT EXPECTATIONS	hosta	WHITE	JUN-JULY	18-36
HOSTA ISLAND BREEZE	hosta	PURPLE	AUGUST	12
HOSTA LAKESIDE PAISLEY PRINT	hosta	PURPLE	JUNE-JULY	10
HOSTA LIBERTY	hosta	PURPLE	JULY	12-36
HOSTA PRAYING HANDS	hosta	PURPLE	JULY	18
HOSTA RAINBOWS END	hosta	PURPLE	AUGUST	10
HOSTA RAINFOREST SUNRISE	hosta	WHITE	JUNE	10
HOSTA STAINED GLASS	hosta	WHITE	JULY	10
HOSTA SUM AND SUBSTANCE	hosta	PURPLE	JULY	24-36
HOSTA VICTORY	hosta	WHITE	JULY-AUG	24-36
IRIS CRISTATA	iris	BLUE	APRIL	6-9
LAMIASTRUM GAL. FLORENTINUM	archangel	YELLOW	APR-MAY	12-24
LAMIASTRUM GAL. HERMAN'S PRIDE	archangel	YELLOW	APR-MAY	12-36
LAMIUM M. BEACON SILVER	dead nettle	PURPLE	MAY	6-8
LAMIUM M. GOLDEN ANNIVERSARY	dead nettle	PINK	MAY	4-8
LAMIUM M. ORCHID FROST	dead nettle	PURPLE	MAY	6-8
LAMIUM M. PINK PEWTER	dead nettle	PURPLE	APR-MAY	8
LAMIUM M. PURPLE DRAGON	dead nettle	PURPLE	MAY	6-8
LAMIUM M. WHITE NANCY	dead nettle	WHITE	MAY	6-9
LIGULARIA DENTATA OTHELLO	leopard plant	YELLOW	JULY-AUG	24-36
LIGULARIA DENTATA PANDORA	leopard plant	YELLOW	JULY-AUG	24-36
LIRIOPE MUSCARI BIG BLUE	lily turf	PURPLE	AUG-SEPT	12-24
LOBELIA CARDINALIS	lobelia	RED	JULY-AUG	24-48

## Plants for Shade or Part-shade

Scientific Name	Common Name	Color	Blooms	Inches High
LOBELIA SIPHILITICA BLUE SELECT	lobelia	BLUE	JULY-AUG	24-48
LYSIMACHIA NUMMULARIA AUREA	creeping Jenny	YELLOW	JUNE	4-8
MERTENSIA VIRGINICA	bluebells	BLUE	APR-MAY	18-24
MYOSOTIS PALUSTRIS	forget-me-not	BLUE	JUNE	6-12
PACHYSANDRA TERM. GREEN SHEEN	pachysandra	WHITE	APRIL	6-12
PACHYSANDRA TERM. SILVER EDGE	pachysandra	WHITE	APR-MAY	6-12
PHLOX DIVARICATA	phlox	BLUE	APR-MAY	8-12
PHLOX DIVARICATA LOUISIANA BLUE	phlox	BLUE	APR-MAY	12
PODOPHYLLUM PELTATUM	Mayapple	PURPLE	APRIL	12-18
POLEMONIUM REPTANS	Jacob's ladder	PURPLE	MAY	12-18
POLYGONATUM BIFLORUM	Solomon's Seal	WHITE	APR-MAY	12-36
POLYGONATUM MULTI. VARIEGATUM	Solomon's Seal	WHITE	APR-MAY	24-30
PULMONARIA L. CORAL SPRINGS	lungwort	PINK	APR-MAY	6-12
PULMONARIA LONG. E.B. ANDERSON	lungwort	PURPLE	APR-MAY	8-12
STYLOPHORUM DIPHYLLUM	celandine poppy	YELLOW	APR-MAY	12-18
THALICTRUM AQUILEGIFOLIUM	meadow rue	PURPLE	MAY	24-36
THALICTRUM DELAVAYI	meadow rue	PURPLE	MAY	36-60
TIARELLA CORDIFOLIA	foam flower	X-MIXED	MAY	8-12
TIARELLA WHERRYI	foam flower	WHITE	MAY	8-12
TRICYRTIS HIRTA VARIEGATA	toad lily	X-MIXED	AUG-SEPT	12-36
TRICYRTIS LAT. WHITE TOWERS	toad lily	WHITE	AUG-SEPT	12-36

## Shade - Ferns

Scientific Name	Common Name	Inches High
ATHYRIUM FILIX-FEMINA	lady fern	30
ATHYRIUM NIPOMICUM PICTUM	Japanese painted fern	12-18
ATHYRIUM X GHOST	ghost fern	24-36
DRYOPTERIS ERYTHROSORA	autumn fern	30
DRYOPTERIS FILIX-MAS ROBUSTA	male fern	36
DRYOPTERIS MARGINALIS	leatherwood fern	12-24
MATTEUCCIA STRUTHIOPTERIS	ostrich fern	36
OSMUNDA REGALIS	royal fern	48
POLYSTICHUM ACROS	Christmas Fern	18-24
POLYSTICHUM TSUS-SIMENSE	Korean rock fern	12-20

# Watch Out for Weeds

Many weeds love bare ground, and new plantings offer this in bounty. Here are some tips to help you prevent undesirable plants from getting a foothold in years one and two.

- 1. Start a routine.** It can be tempting to leave weeds for "next week." However, if "next week" turns into "next month," what began as a modest task can grow into a onerous one. Keep weeds down to a manageable level by scheduling regular check-ins. This might mean setting up phone reminders or recruiting a reliable partner who will hold you to your word. We advise reserving an hour a week or 2-3 hours every other week in the morning or evening to avoid the heat of the day.
- 2. Learn to distinguish weeds from your plants.** Most folks have trouble telling weeds from other plants when a garden is young. Use an app like iNaturalist or PlantNet to upload a photo to help you identify common weeds.
- 3. Eradicate the worst weeds first.** Some weeds fizzle out on their own as the plantings mature, while others spread aggressively, eventually overtaking desirable plants. Rather than starting at one end of your garden bed and weeding everything indiscriminately as you move along, try to assess the entire area, identify the biggest bullies and eradicate these as best you can. This is an effective way to manage a new landscape when time is tight and weeds are plenty. If there are more priority weeds than you have time for, strategize by focusing first on tall weeds, woody weeds and weeds in flower. Then leave the rest for next week.  
  
Weeds to watch out for include: tree of heaven (*Ailanthus altissima*), Siberian elm (*Ulmus pumila*), mulberry (*Morus alba*), bindweed (*Convolvulus arvensis*), nutsedge (*Cyperus rotundus*) and smooth brome (*Bromus inermis*).
- 4. Leave no room for weeds to sprout.** One of the best ways to reduce weeds is to use mulch or, better yet, plant living groundcover to reduce the bare spaces where weeds like to fill in. Try some of the following low-growing groundcover plants: poppy mallow (*Callirhoe*), pasqueflower (*Pulsatilla*), evening primrose (*Oenothera*), 'Snow Flurry' aster (*Aster ericoides*), basket-of-gold (*Aurinia saxilis*), snow in summer (*Cerastium tomentosum*), sedums, sedges (*Carex*) and snowdrop anemone (*Anemone sylvestris*).
- 5. Try to enjoy it!** Weeding can be a mindful, meditative activity if you allow it to be! Listen to the birds and insects chirping and buzzing in your garden. You'll be done with your chore before you know it!

## Grasses

Scientific Name	Common Name	Inches high
ANDROPOGON GERARDII PAWNEE	big bluestem	60-72
BOUPELOUA CURTIPENDULA TRAILWAY	sideoats grama	16-32
BOUPELOUA GRACILIS	blue grama	16-20
BOUPELOUA GRACILIS BLONDE AMBITION	blue grama	30-36
CALAMAGROSTIS AVALANCHE	reed grass	48
CALAMAGROSTIS BRACHYTRICHA	reed grass	42
CALAMAGROSTIS EL DORADO	reed grass	48-60
CALAMAGROSTIS KARL FOERSTER	reed grass	60-72
CALAMAGROSTIS OVERDAM	reed grass	24-36
CAREX APPALACHICA	sedge	10-12
CAREX GRAYI	sedge	24-36
CAREX MUSKINGUMENSIS	sedge	30
CAREX OSHIMENSIS EVERGOLD	sedge	12
CAREX PENNSYLVANICA	sedge	8-10
CAREX PLANTAGINEA	sedge	15
CAREX ROSEA	sedge	12
CAREX SPRENGELII	sedge	12-36
DESCHAMPSIA NORTHERN LIGHTS	tufted hairgrass	16
ERAGROSTIS TRICHODES	lovegrass	18-24
FESTUCA CINERA DWARF	fescue	10
HAKONECHLOA MACRA AUREOLA	Japanese forest grass	12-24
HELICTOTRICHON SAPHIRSPRUDEL	blue oatgrass	24
KOELERIA MACRANTHA	Junegrass	12
MISCANTHUS SINENSIS LITTLE ZEBRA	maidengrass	36-48
MISCANTHUS SINENSIS AUTUMN RED	maidengrass	48-96
PANICUM VIRGATUM CHEYENNE SKY	switchgrass	24
PANICUM VIRGATUM DALLAS BLUES	switchgrass	84
PANICUM VIRGATUM HEAVY METAL	switchgrass	48-60
PANICUM VIRGATUM NORTHWIND	switchgrass	48-60
PANICUM VIRGATUM RRI RUBY RIBBONS	switchgrass	36-48
PANICUM VIRGATUM SHENANDOAH	switchgrass	48
PENNISETUM ALOPECUROIDES HAMELN	fountaingrass	24-36
PENNISETUM ALOPECUROIDES PIGLET	fountaingrass	18
PENNISETUM ALOPECUROIDES RED HEAD	fountaingrass	24-48
PENNISETUM ORIENTALE KARLEY ROSE	fountaingrass	24-36
SCHIZACHYRIUM SCOPARIUM BLAZE	little bluestem	36
SCHIZACHYRIUM SCOP. BLUE HEAVEN	little bluestem	24-48
SCHIZACHYRIUM SCOP. PRAIRIE BLUES	little bluestem	36-42
SCHIZACHYRIUM SCOPARIUM THE BLUES	little bluestem	24-48
SCHIZACHYRIUM SCOP. STANDING OVATION	little bluestem	24-36
SESLERIA AUTUMNALIS	moor grass	12-15
SORGASTRUM NUTANS INDIAN STEEL	indiangrass	32-42
SPOROBOLUS HETEROLEPIS	prairie dropseed	24
SPOROBOLUS WRIGHTII	giant sacaton	36-72

## Non-hardy Plants

ABUTILON
ACALYPHA
ALTERNANTHERA
ASCLEPIAS
ASPARAGUS
BEGONIA
CANNA
CAPSICUM
CITRUS
COBAEA
COLEUS
COSMOS
CUPHEA
DATURA
DICHONDRA
EVOLVULUS
FARFUGIUM
FUCHSIA
GYNURA
HELICHRYSUM
HIBISCUS ROSA
IPOMOEA
IRESENE
JUSTICIA
LANTANA
LAURENTIA
LEONOTIS
LOTUS
MANETTIA
MAURANDYA
NICOTIANA
PANDOREA
PASSIFLORA
PELARGONIUM
PETUNIA
PLECTRANTHUS
PSEUDERANTHEMUM
PSEUDOGYNOXYS
SALVIA
SCROPHULARIA
SCUTELLARIA
STROBILANTHUS
STROMANTHE
TRADESCANTIA
TULBAGHIA
VERBENA
Plus non-hardy grasses and vines.

## Trees

Medium Tube: \$7 Large Tube: \$9 1 Quart: \$12  
1 Gallon: \$35-45 3 Gallon tree or shrub: \$30-75

Scientific Name	Common Name
AESCULUS FLAVA	Yellow buckeye
AESCULUS GLABRA	Ohio buckeye
ACER NIGRUM	black maple
ACER SACCHARUM	sugar maple
AMELANCHIER CANADENSIS	shadblow serviceberry
AMELANCHIER x GRANDIFLORA	'Autumn Brilliance' apple serviceberry
ASIMINA TRILOBA	pawpaw
BETULA LENTA	sweet birch
CARPINUS CAROLINIANA	ironwood
CARYA CORDIFORMIS	bitternut hickory
CARYA ILLINOENSIS	northern pecan
CARYA LACINIOSA	shellbark hickory
CATALPA SPECIOSA	nothern catalpa
GINKGO BILOBA	maidenhair tree
GYMNOCLADUS DIOICUS	Kentucky coffeetree
MALUS LIBERTY	Liberty apple
NYSSA SYLVATICA	black gum
OSTRYA VIRGINIANA	American hophornbeam
PLATANUS OCCIDENTALIST	American sycamore
POPULUS TREMULOIDES	Prairie Gld quake aspen
PRUNUS ELBERTA	Elberta peach
PRUNUS MONTMORENCY	Montmorency cherry
PRUNUS SEROTINA	black cherry
PYRUS x BARTLETT	Bartlett pear
QUERCUS ALBA	white oak
QUERCUS BICOLOR	swamp white oak
QUERCUS COCCINEA	scarlet oak
QUERCUS ELLIPSOIDALIS	Hill's oak
QUERCUS LYRATA	overcup oak
QUERCUS MACROCARPA	'Relict' bur oak
QUERCUS MUELENBREGII	chinkapin oak
QUERCUS PRINOIDES	dwarf chinkapin oak
QUERCUS ROBER	English oak
QUERCUS RUBRA	red oak
QUERCUS SHUMARDII	Shumard oak

## Shrubs

Scientific Name	Common Name
AMELANCHIER ALNIFOLIA	Saskat. serviceberry
ARONIA ARBUT. BRILLIANTISSIMA	'Brilliant red' chokeberry
ARONIA MELANOCARPA 'VIKING'	'Viking' black chokeberry
CEPHALANTHUS OCCIDENTALIS	buttonbush
CHIONANTHUS OCCIDENTALIS	white fringetree
CORNUS ALTERNIFOLIA	pagoda dogwood
CORNUS AMOMUM	silky dogwood
CORYLUS AMERICANA	'Sun Harvest' A. hazelnut
HAMAMELIS VERNALIS	vernal witchhazel
HYPERICUM PROLIFICUM	shrubby St. John's wort
LINDERA BENZOIN	spicebush
PRUNUS AMERICANA	wild plum
PRUNUS VIRGINIANA	chokecherry
RHAMNUS CAROLINIANA	Carolina buckthorn
RHUS COPALLINA	shining sumac
ROSA SETIGERA	climbing prairie rose
SALIX HUMILIS	prairie willow
SAMBUCUS CANADENSIS	'Adam' Amer. elderberry
SYMPHORICARPOS ORBICULATUS	coralberry
VIRBURNUM LENTAGO	nannyberry viburnum
VIRBURNUM PRUNIFOLIUM	blackhaw viburnum

**PLEASE NOTE:**  
We are no longer selling succulents at Spring Affair.

## Herbs

Scientific Name	Common Name
AGASTACHE FOENICULUM	anise hyssop
ALLIUM GEISHA	onion
ALLIUM SCHOENOPRASUM	onion
ALOYSIA TRIPHYLLA	lemon verbena
ANETHUM GRAVEOLENS FERNLEAF	fernleaf dill
ARTEMESIA DRACUNCULUS SATIVA	tarragon
CALAMINTHA GRAND. VARIEGATA	calamint
CALAMINTHA NEPTA MONTROSE WHITE	calamint
CORIANDRUM SATIVUM	cilantro
CYMBOPOGON CITRATUS	lemongrass
EUCALYPTUS CITRIODORA	lemon-scent gum
FOENICULUM VULGARE DULCE	fennel
HIEROCHLOE ODORATA	sweetgrass
HYSSOPSIS OFFICINALIS	hyssop
LAURUS NOBILIS	bay laurel
LAVANDULA ANGUST. BUENA VISTA	lavender
LAVANDULA ANGUSTIFOLIA HIDCOTE	lavender
LAVANDULA ANGUSTIFOLIA LADY	lavender
LAVANDULA ANGUSTIFOLIA MUNSTEAD	lavender
LAVANDULA ANGUSTIFOLIA WEE ONE	lavender
LAVANDULA INTERMEDIA DUTCH	lavender
LAVANDULA INTERMEDIA GROSSO	lavender
LAVANDULA INTERMED. PHENOMENAL	lavender
LAVANDULA PROVENCE	lavender
LEVISTICUM OFFICINALE	lovage
MELISSA OFFICINALIS	lemon balm
MENTHA AQUATICA CITRATA LIME	mint
MENTHA PIPERITA CANDYMINT	mint
MENTHA PIPERITA CHOCOLATE	mint

MENTHA SPICATA KENTUCKY COLONEL	mint
MENTHA SPICATA THE BEST	mint
NASHIA INAGUENSIS	moujean tan
OCIMUM BASILICUM GENOVESE	basil
ORIGANUM HOT & SPICY	oregano
ORIGANUM VULGARE	oregano
PETROSELINUM CRISPUM CRISPUM	parsley
PETROSELINUM CRISPUM NEAPOL. (ITAL)	parsley
PLECTRANTHUS AMBOINICUS	Cuban oregano
POGOSTEMON PATCHOULI	patchouli
ROSMARINUS LAVANDULACEUS	rosemary
ROSMARINUS OFFICINALIS ARP	rosemary
ROSMARINUS OFFICINALIS IRENE	rosemary
ROSMARINUS OFFIC. MADELINE HILL	rosemary
SALVIA ELEGANS (PINEAPPLE SAGE)	sage
SALVIA OFFICINALIS	sage
SALVIA OFFICINALIS PURPURESCENS	sage
SALVIA OFFICINALIS TRICOLOR	sage
SATUREJA MONTANA	winter savory
STEVIA REBAUDIANA	sweetleaf
THYMUS CITRIODORUS AUREUS	thyme
THYMUS CITRIODORUS MAYFAIR	thyme
THYMUS PRAECOX PORLOCK	thyme
THYMUS PRAECOX NUTMEG	thyme
THYMUS SPICY ORANGE	thyme
THYMUS VULGARIS ENGLISH WINTER	thyme



# Why Scientific Names?

Botanical nomenclature refers to the system of how plants are named. There are two parts (binomial) to a scientific name, similar to how people have a first and last name. This naming convention also keeps us from confusing species of plants that share the same common name, like "ironwood". Although difficult to remember, with time and practice scientific names become familiar, and may be enjoyable when discussing plants with other plant people at Spring Affair.

Please note that plants for sale at Spring Affair are organized on tables alphabetically by genus. Scientific names are always *italicized* or underlined when written.



Bur Oak  
*Quercus macrocarpa*

## *Quercus*

### Genus

Genera (plural of genus) is a refining classification based on species **similarities** in flowering, form or ancestry. When written, the genus name is always capitalized.

*Quercus*, the genus for all oaks, is the Latin word for "oak."

## *macrocarpa*

### Specific Epithet

The specific epithet further distinguishes an individual species and is based on **differences** in flowering, form or ancestry.

When written, the specific epithet name is always composed in lowercase letters. Cultivar names that follow the specific epithet are capitalized and contained in quotations.

*Macro-carpa* is Latin meaning "large-fruited" and describes the large acorns that are characteristic of bur oak trees.

Graphic created by Brad Kindler, Nebraska Statewide Arboretum Sustainable Landscape Specialist. Listen to our "Botanical Latin" podcast, episode 41, for more information on this topic. Visit [plantnebraska.org](http://plantnebraska.org) and click on "Bloom Box" under the "What We Do" tab, then click "Growing Deeper Podcast."

Look for our 'Bird' on the label at your local garden center.

BLUEBIRD NURSERY, INC.  
CLARKSON, NEBRASKA

**Phil Pierce**  
CONSULTING ARBORIST  
foresterphil@gmail.com

Monitoring with Recommendations  
Tree Appraisal, Evaluation, Diagnosis  
Training the Experts. (402) 253-2860

**GREAT PLAINS**  
NURSERY

Weston, NE 68070 • 402.540.4801 • [greatplainsnursery.com](http://greatplainsnursery.com)

**NATIVE TREES & SHRUBS FOR HEALTHY LANDSCAPES**  
High quality plants grown in specialized Rootmaker® containers & Grow Bags to ensure survivability and long term health.

Consulting • Planning • Delivery • Planting • Maintenance

**TREES FOR A Beautiful Future**

ENHANCE your landscape with a variety of trees from **Faller Landscape**. Their knowledgeable staff can help you select trees that will provide colorful foliage spring, summer and fall.

Call 402-362-2714 today and make them your tree source!

**Faller Landscape**

[fallerlandscape.com](http://fallerlandscape.com) • 1502 Rd M • York, NE

# Good Things Come in Small Packages

Planting a smaller tree can yield bigger benefits in the long run.

“Plant the smallest tree you can stand” is usually the advice I give people when they ask what size nursery tree they should plant in their landscape. This general advice goes for any type of tree being planted, regardless of its potential mature size.

It's certainly understandable to want to plant large trees, as they provide a more immediate impact to the landscape. But in general, the larger a tree is at planting, the longer it takes to establish in the landscape and the more work (and water) is involved.

## Longterm Tree Health Starts at the Roots

It's easier to bring along a more complete root system with a small tree than it is for a large one. And the root system is just as important to the health of the tree as are the trunk and branches.

Think about it this way: a naturally growing tree typically has both deep-reaching anchor roots along with wide-spreading feeder roots that absorb water and nutrients. As the tree grows, these feeder roots typically spread out at least as wide as the tree is tall. Obviously, as the tree gets bigger, it becomes harder to transplant with its root system intact. There's just no way around the fact that for most nursery trees sold, the root system must be compromised to some extent to make them portable. Smaller trees have less-compromised roots and generally establish faster and easier than do larger trees.

## A Test Case

To illustrate this point, I was involved in a transplant study years ago where bur oaks were planted in a test site from both acorns and from containerized nursery stock, including some trees already about 10 feet tall. The oaks grown directly from acorns caught up to and passed the nursery trees within 7 years. Fourteen years later, some of these acorns have grown into 25-foot-tall trees!

I generally prefer trees that are in 1-5-gallon containers and 3-7 feet tall in the landscape. I sometimes plant small seedlings in a nursery to be transplanted later. One drawback for small trees, especially seedlings, is they need extra protection from animals, mowers and trimmers for several years in the landscape.

## The Container Matters

This doesn't mean larger nursery trees are bad. Indeed, in recent years the nursery industry has gotten much better at growing trees in containers, thanks to the use of grow bags and special containers that help to produce better, more-fibrous root systems. Many good-quality larger trees are still found with ball and burlap (B&B) root systems, and mechanical tree spades are especially helpful in moving and preserving larger trees (a good tree spade operator is fun to watch!). I've personally been involved in planting trees of



Caliper of Tree Trunk	Root Establishment Time
1 inch	1.5 years
2 inches	3 years
3 inches	4.5 years
4 inches	6 years
5 inches	7.5 years
6 inches	9 years

Chart credit: University of Minnesota Extension

all sizes and have had good luck with many larger transplants as long as I could keep their roots moist.

But ultimately, I prefer planting smaller trees because they're easier to handle and easier to establish; because I enjoy watching them grow big (it's like watching your own child grow up); and because smaller trees are less expensive, and I'm a cheap date (just ask my best gal).

*Justin Evertson is the Green Infrastructure Coordinator for the Nebraska Statewide Arboretum.*

# MOVING FIREWOOD

## TRANSPORTS TREE-KILLING INSECTS AND DISEASES

**BURN IT  
WHERE YOU  
BUY IT**

**DON'T TAKE IT  
WITH  
YOU**

Spongy Moth

Asian Longhorned  
Beetle

Spotted Lanternfly

**NEBRASKA**  
Good Life. Great Roots.

NEBRASKA DEPARTMENT OF AGRICULTURE  
**ANIMAL & PLANT HEALTH PROTECTION**

**SURVEY & DETECTION  
PROGRAM**

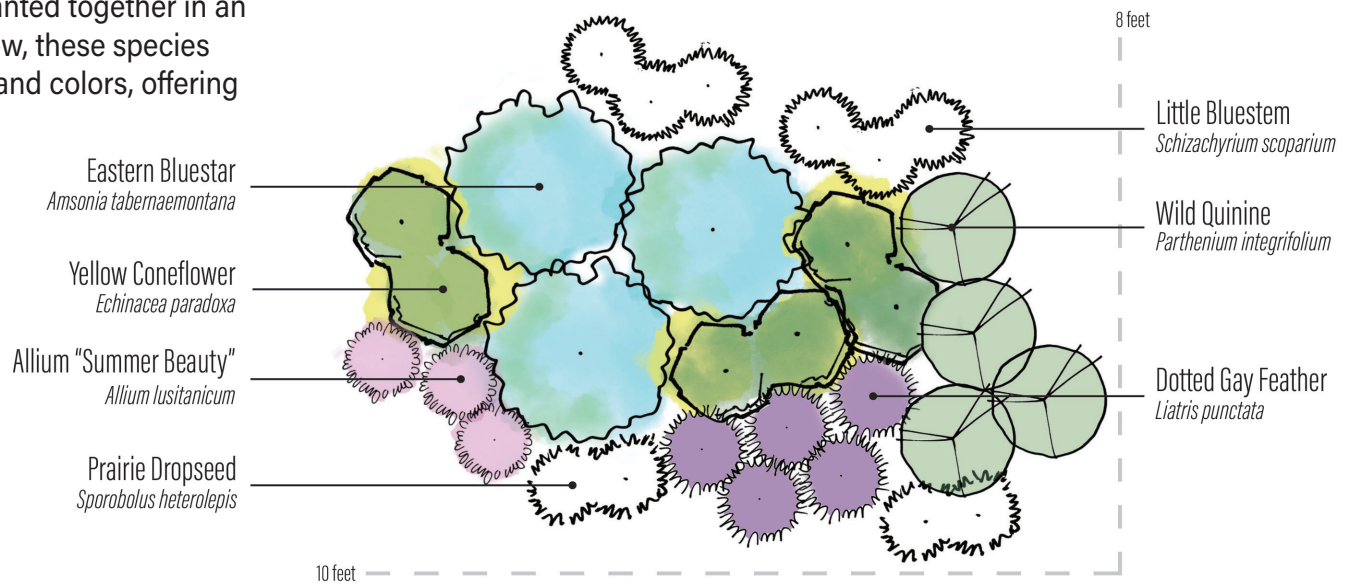
Photos courtesy of Forestry Images © & Don't Move Firewood ©

# One Stop Shopping: Design, Purchase, Plant

New to gardening? No worries! Choose a garden design that suits your sun or shade requirements, pick out and purchase your plants and get gardening!

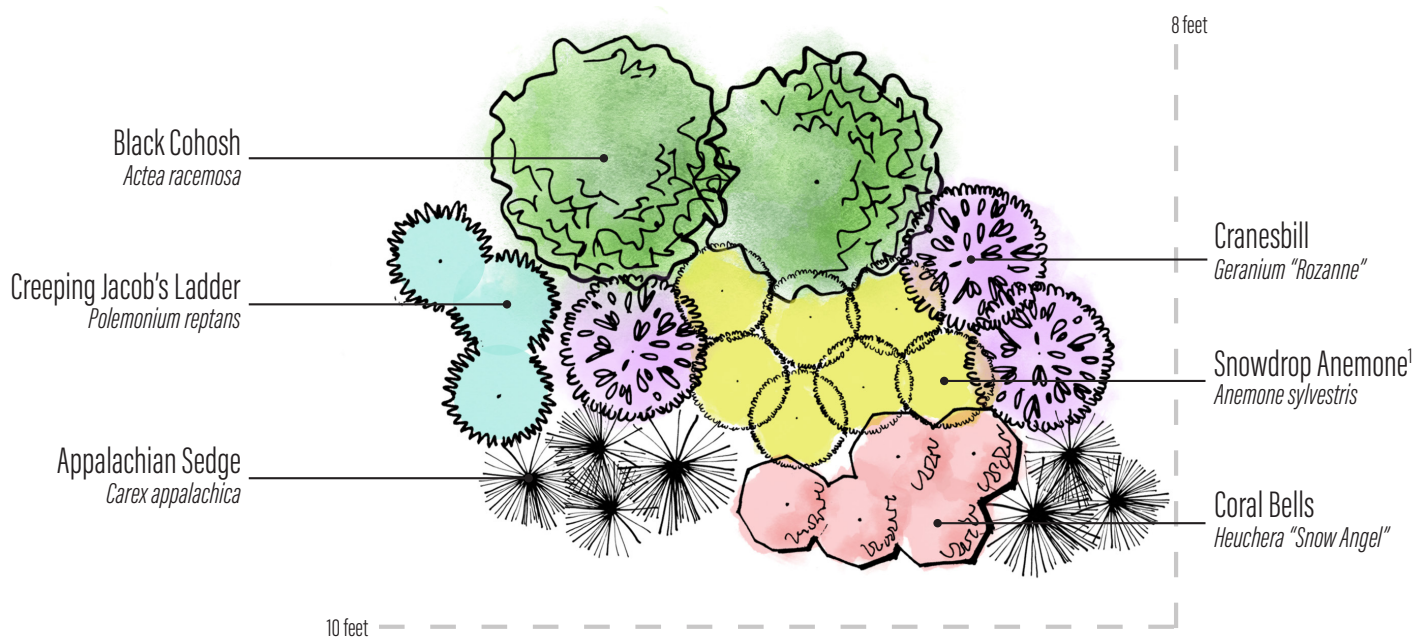
## Full Sun Perennials

Full sun perennials are species that will thrive in 8+ hours of sunlight each day. Once established, they are drought tolerant, cold hardy and return to bloom every season. Planted together in an arrangement, like the one shown below, these species provide a succession of bloom times and colors, offering visual interest throughout the season.



## Part-Shade Perennials

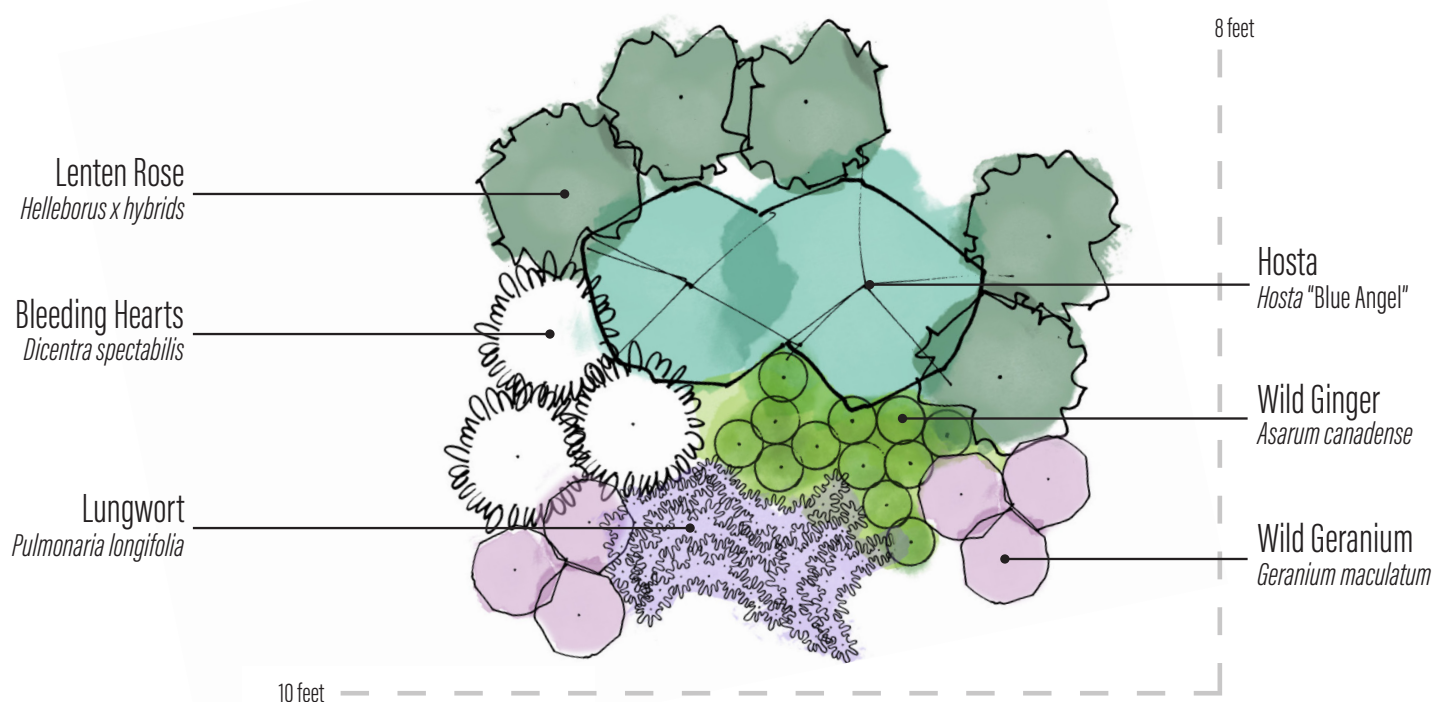
Part-shade perennials are species that will thrive between 4-6 hours of sunlight each day. Once established, they may require occasional watering in drought conditions. These species are cold hardy and return to bloom every season. Planted together in an arrangement, like the one shown at left, these species provide a succession of bloom times and colors, offering visual interest throughout the season.



<sup>1</sup> Substitute any Anemone in shade list if Snowdrop is unavailable.

## Shade Perennials

Shade perennials are species that are adapted to full shade or receive less than 4 hours of sunlight each day. Areas under trees, along fences, or on the shady north side of house are locations where shade perennials thrive. Many appreciate moist soil and can benefit from supplemental watering during dry periods. Planted together in an arrangement, like the one shown at right, these species provide a succession of bloom times and colors, offering visual interest throughout the season.



# At a Glance: Top-notch Pollinator Plants

Help to restore pollinator habitat in your backyard by adding pollinator favorites.

There's a lot of buzz in the air these days about supporting pollinators. According to scientists, pollinator populations have declined significantly in recent years, mainly due to habitat loss. Our home landscapes can help by creating pollinator-friendly gardens and restoring some habitat. You can make a big difference at the scale of a large meadow garden or a pocket prairie plot. Installing and maintaining a diverse and abundant set of wildflowers will help support the needs of many beneficial insect species. Strive for plant diversity, even in the lawn (put up with a few "weeds"). Taking any action is better than taking none!

The most familiar pollinators are bees and butterflies, moths and hummingbirds, but don't discount the importance of flies and beetles. They also play a crucial role as important pollinators and as larval insect predators.

Plants and pollinators have evolved to create a symbiotic relationship. Pollinators depend on flower nectar and pollen as their food source, and most species visit a wide variety of flowers for forage. There is evidence that bees reared on multiple sources of pollen have improved immune system function and are better equipped to survive parasitism. Pollinators use plants that contain natural healing essential oils to boost their immune system.

Some plants are more attractive to pollinators than others because they are more accessible and produce more food. Pollinators have evolved to seek out plants that are a rich source of nectar and pollen. These plants are a notch above and considered "special value" to bees and other beneficial insects.

Here are some of the best pollinator plants to include in your yard. Make plans to include these top-notch plants in your garden this year, and watch as the insects create a buzz clamoring over them.



Clockwise from top left: aromatic aster (*Aster oblongifolius*), 'Fireworks' goldenrod (*Solidago rugosa*), nodding pink onion (*Allium cernuum*), spiked gayfeather (*Liatris spicata*).

## Allium

Nodding pink onion, *Allium cernuum*  
Prairie onion, *Allium stellatum*

## Aster

Aromatic aster, *Aster oblongifolius*  
Smooth aster, *Aster laevis* 'Bluebird'  
Calico aster, *Aster lateriflorum* 'Lady in Black'  
Heath aster, *Aster ericoides* 'Snow Flurry'  
New England aster, *Aster novi-angliae* 'Alma Potshke'

## Black-Eyed Susan

Showy black-eyed Susan, *Rudbeckia fulgida* var. *speciosa*  
'Herbstonne' cutleaf coneflower, *Rudbeckia nitida*  
'Prairie Sun' black-eyed Susan, *Rudbeckia hirta*  
Sweet coneflower, *Rudbeckia subtomentosa*

## Gayfeather

Rough gayfeather, *Liatris aspera*  
Dotted gayfeather, *Liatris punctata*  
Spiked gayfeather, *Liatris spicata*  
Meadow gayfeather, *Liatris ligulistylus*  
Thickspike gayfeather, *Liatris pycnostachya*

## Goldenrod

'Crown of Ray's' goldenrod, *Solidago* sp.  
'Fireworks' goldenrod, *Solidago rugosa*  
'Wichita Mountains' goldenrod, *Solidago* sp.

## Mountain Mint

Virginia mountain mint, *Pycnanthemum virginianum*  
Blunt mountain mint, *Pycnanthemum muticum*

## Seasonal Superstars

Dwarf blue indigo, *Baptisa minor*  
Culver's root, *Veronicastrum virginicum*  
Grey-headed coneflower, *Ratibida pinnata*  
Purple coneflower, *Echinacea* species  
Purple poppymallow, *Callirhoe involucrata*  
Purple prairie clover, *Dalea purpurea* 'Stephanie'  
Rose milkweed, *Asclepias incarnata* 'Cinderella'  
Rattlesnake master, *Eryngium yuccifolium*  
Joe-Pye weed, *Eupatorium purpureum*

## Non-native Top-notch Pollinator Plants

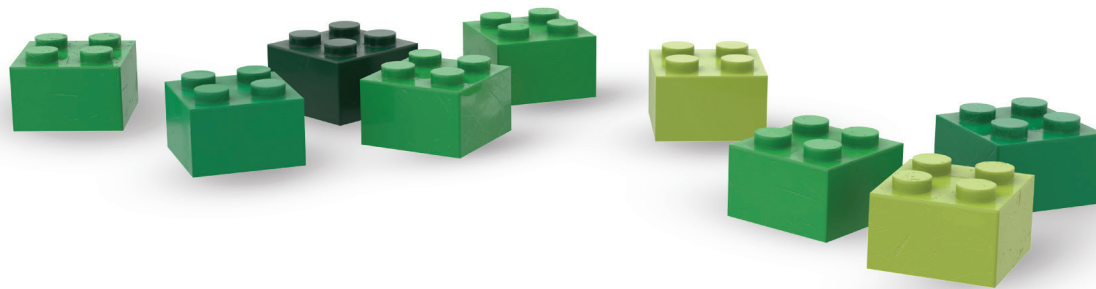
Blue giant hyssop, *Agastache* 'Blue Fortune'  
Blue globe thistle, *Echinops ritro*  
Blue mist spirea, *Caryopteris* '1st Choice'  
Lesser calamint, *Calamintha nepeta*  
Catmint, *Nepeta* species  
Tall sedum, *Sedum spectabile* 'Neon'

Bob Henrickson is the Horticulture Coordinator for the Nebraska Statewide Arboretum.

**FEBRUARY 1  
THROUGH  
MAY 18**



Sean Kenney's  
**NATURE  
CONNECTS**®  
Made with LEGO® bricks



LAURITZEN  
GARDENS

**100 Bancroft Street, Omaha**  
**lauritzengardens.org**



# At a Glance: Great Grasses

Ornamental grasses are key plants for the garden, providing seasonal beauty with unique colors and textures. Reliably easy to grow and well-adapted to the extremes of the Great Plains climate, grasses offer a huge array of sizes and flowering times, as well as these additional benefits:

- Grasses provide movement in the garden, dancing in the slightest summer breeze. As they move, the stems and leaves rustle together to add sound to the garden. The flowers and foliage of grasses are highly translucent and are often at their best when back-lit or side-lit by the sun. The low angle of the sun in autumn and winter can literally make a grass glow.
- Ornamental grasses come in a variety of soft and subtle colors, from forest green to lime and from gray-green to powder blue to light yellow, all complementing brightly colored perennial flowers. The autumn chill transforms grasses into an array of gold, russet, bronze and burgundy. The fluffy flowers and seed heads of grasses undergo a few changes in color and form from month to month, often enhanced by morning fog and frost in the fall.
- Most grasses add a strong vertical element to a garden design. The long linear leaves and fine stems of large grasses provide a soft, fine-textured backdrop and shorter grasses complement broad-leaf perennials in front. Grasses help frame the flowers and provide support for floppy perennials.
- Cut grasses are ideal in fresh or dried arrangements—they offer a long vase life, vertical line, excellent filler material and seasonal beauty in both indoor and outdoor containers.



A variety of ornamental grasses stand out in a Gering neighborhood.



Left: little bluestem (*Schizachyrium scoparium*) and right: prairie dropseed (*Sporobolus heterolepis*)

## Short Prairie Grasses for Sunny, Dry Sites

**Blue Grama** (*Bouteloua gracilis*)—18" h, 12" w. Native to dry prairies; tufted with thin, wiry leaves to 8"; 1" eyelash-like seed heads top thin stems to 18" in late June; nice decorator plant or mass for prairie-style lawn.

**Sideoats Grama** (*Bouteloua curtipendula*)—2-3' h, 18" w. Mounds of gray-green foliage; numerous narrow flower stalks with oatlike seed heads held on one side of the stems, to 3' h; bronze-orange fall color; straw in winter.

**Little Bluestem** (*Schizachyrium scoparium*)—2-3' h, 18" w. Dependable native bunch grass with fine-textured bright green or light blue leaves to 2' tall in summer; the late summer flowers dry in fall, becoming silvery and remain attractive through winter; avoid highly fertile soils or excessive moisture, heavy mulching.

- 'Blaze'—Nebraska seed source; nice reddish fall color.
- 'Blue Heaven'—U of Minnesota selection; upright habit; bright blue foliage.
- 'Standing Ovation'—blue-green summer foliage; shades of purple, orange and red in fall.
- 'The Blues'—Flint Hills of Kansas seed source; needs dry, full sun site.

**Prairie Dropseed** (*Sporobolus heterolepis*)—2-3' h, 18" w. Native bunch grass with thin, ribbon-like leaves form 2' mounds; delicate seed heads appear in late summer and remain attractive through fall; attractive when back lit and scented; foliage turns deep orange to light copper; likes it dry and never needs dividing.

**Prairie Junegrass** (*Koeleria pyramidata*) Dryland, cool season, native bunch grass with gray-green leaves; blooms early June with narrow, erect inflorescence; needs well-drained, dry soils; short-lived but will reseed, making it ideal for naturalizing.



Left: big bluestem (*Andropogon gerardii*) and right: 'Dallas Blues' switchgrass (*Panicum virgatum*)

## Tall Prairie Grasses for Wet or Dry Soils

**Big Bluestem** (*Andropogon gerardii*)—5-6' h, 2' w. Impressive native of the tall grass prairie; rich, green leaves to 2' by the end of June; flowering stalks in August up to 6' high; seed heads resemble turkey's foot; reliable fall color in copper, rich orange, with maroon tones; may grow floppy if shaded; wet or dry soils. Single plants are subtly attractive, and broad drifts can be dramatic as a backdrop or screen. 'Pawnee', NE seed source; good reddish-orange fall color.

**Indiangrass** (*Sorghastrum nutans*)—5-6' h, 2' w. One of the most beautiful prairie grasses in fall. A clump former with blue-green leaves and golden, feathery seed heads held above leaves in fall to 6' high. It is very adaptable and can grow in a variety of sites; moderately drought tolerant; best grown in full sun. They will self-sow, so this is a great one for meadow plantings. 'Indian Steel' has powder blue foliage; nice upright habit.

**Switchgrass** (*Panicum virgatum*) Very adaptable to soil types; wet or dry, sandy or clay; use for quick screen, backdrop, vertical line, rain gardens, poor soils. Avoid shade and top watering to prevent lax, floppy stems.

- 'Dallas Blues'—blue-green, wide-bladed leaves; maroon tinted seed heads; 5-7' h
- 'Northwind'—most upright of all selections; 5-6' h, 3' w
- 'Ruby Ribbons'—blue-green base foliage that turns a deep wine-red color months before other switchgrass. Fantastic new selection; 3-4' h, 2-2.5' w.
- 'Shenandoah'—compact plants; leaves streaked with red beginning in July; 4' h

Bob Henrickson is the Horticulture Coordinator for the Nebraska Statewide Arboretum.

Become the gardener you want to be.  
Listen to NSA's podcast:  
Bloom Box: Growing Deeper

New episodes every other Monday, everywhere you get your podcasts or at [plantnebraska.org](http://plantnebraska.org).



Adding the **WOW** to Your Inspiration

QUALITY. VARIETY. EXPERIENCE. EXPERTISE. SERVICE.

Our priority is to deliver the best and freshest products that meet your highest standards and help you grow your business.

B&B Trees • Evergreen Trees/Shrubs • Bagged Trees  
Deciduous Shrubs • Shrub Roses • Ornamental Grasses  
Perennials • Annuals • Grafted Evergreens  
Topsoil • Hardwood Mulch



**Papio Valley**  
nursery

11015 South 48th St.  
Papillion, NE 68133  
Phone: 402.547.5001  
Fax: 402.505.3421  
[papiovalley.com](http://papiovalley.com)

(Wholesale Accounts Only)

# Watering Best Practices for New Plants and Trees

Proper watering can help to ensure more drought-tolerant plants and trees in the long run.

## Water Requirements for New Trees

**At planting:** two 5-gallon buckets (or equivalent)

**Week 1-2:** 2.5 gallons, once a week

**Weeks 3-6:** 2.5 gallons, every other week

**After 6 weeks:** 2.5 gallons once a month for two years

## Watering Methods for Trees

- Fill a 5-gallon bucket and pour slowly around the base of the tree.
- Time how long it takes to fill a 5-gallon bucket with your hose and then water your tree that long.
- Distribute the water around the base of the tree and out to the dripline (the end of the branches) to cover the whole root zone.
- Skip watering if you receive 1 inch or more of rain in a week or if there is snow cover on the ground.

## Watering Requirements for New Perennials

**Week 1-2:** water every other day

**Week 3-4:** water twice a week

**Week 5-6:** water once a week

For the rest of the growing season: water when it has been two weeks without at least 1 inch of rain.

Second year: water when it was been four weeks without at least 1 inch of rain.

## Watering Methods for Perennials

- Add at least 1 inch of water at the soil surface. This will soak 6-10 inches into the soil and will encourage deep root growth.
- Using a soaker hose or watering wand at the base of the plants is the best method. Use caution when using overhead sprinklers, as they don't typically deliver as much water as it appears.

*Sarah Buckley is a Sustainable Landscape Specialist for the Nebraska Statewide Arboretum.*



GRETNA  
402-452-3176

**TAG**  
INK & Thread

LINCOLN  
402-261-4745

SCREEN PRINTING  
EMBROIDERY  
PROMOTIONAL PRODUCTS  
CUSTOM DESIGN

CORPORATE APPAREL · SPORTS UNIFORMS  
SPIRIT WEAR · ONLINES STORES

TAGINKANDTHREAD.COM



**SCHRADER**  
LANDSCAPE DESIGN

**SHEILA SCHRADER**

OWNER & LANDSCAPE DESIGNER  
SCHRADER LANDSCAPE DESIGN

Sheila can help you with landscape designs that reflect your values, including rain gardens, native habitats, and edible landscapes, perfect for DIY enthusiasts who want a clear plan.

(402) 413-5586

sheila@schraderlandscapedesign.com

# At a Glance: Plants to Grow Your Confidence

To quote my favorite teacher—Mrs. Frizzle from *The Magic School Bus*—the best way to learn how to garden is to “take chances, make mistakes and get messy!” Gardening is best learned through experimentation and observation. Not to discount the importance of reading and learning from others but, without a plant to touch, book learning only goes so far. Gardening requires that we get close, touch, feel and sometimes smell to decide what is needed. Observing how a plant reacts to more or less water, more or less sun and more or less heat is the best way to improve your gardening skills. Even experienced gardeners will try a new plant, observe it for a while, decide it isn’t working and then move it.

Your first garden doesn’t need to be perfect; it simply needs to bloom, bring you joy and grow your confidence as a gardener. Don’t worry about planting a picture-perfect native garden, a brilliantly designed landscape or a knockout display of the newest and coolest plants on the market. That can all come later. Your first garden or two will be experiments while you learn how to select and care for different types of plants.

I don’t think it is possible to become a confident gardener without killing at least a few plants, but it is important to have successes to cheer us on. Here are some plants that we think are a good place to start. We chose these plants because we’re confident that they’ll make you confident. They’ll be easy-to-establish, handle a little bit of neglect and generally be dependable through Nebraska’s unpredictable winters and summers. They’ll also create a base for you to add to as you become more experienced.



Betony (*Stachys*) is a good sun choice.



Columbine (*Aquilegia*) thrives in shade.

## PERENNIALS

Anemone (part to full shade)  
 Betony, *Stachys* (full sun)  
 Calamint, *Calamintha* (full sun)  
 Catmint, *Nepeta* (sun or part sun)  
 Columbine, *Aquilegia* (part to full shade)  
 Coneflower, *Echinacea* (sun)  
 Coral bells, *Heuchera* (part to full shade)  
 Coreopsis (sun)  
 Daylily, *Hemerocallis* (part shade)  
 Geranium (sun or part sun)  
 Hosta (shade)  
 Iris (full sun to shade)  
 Phlox (sun or part sun)

Salvia (sun)  
 Sedum (sun)  
 Veronica (full sun)  
 Yarrow, *Achillea* (sun or part shade)

## GRASSES

Blue grama, *Bouteloua gracilis* (full sun)  
 Little bluestem, *Schizachyrium scoparium* (full sun, part shade)  
 Feather reed grass, *Calamagrostis* (full sun)  
 Sedge, *Carex*—especially plains oval sedge, Pennsylvania and palm (sun to full shade)  
 Switchgrass, *Panicum* (full sun, some part shade)

*Sarah Buckley is a Sustainable Landscape Specialist for the Nebraska Statewide Arboretum.*

**DISCOVERY Days+ FARMERS MARKET**

10 a.m. to 1 p.m. | East Campus Loop

**JUNE 14**    **JULY 12**    **AUGUST 9**

- LOCALLY PRODUCED GOODS
- LIVE MUSIC
- FOOD TRUCKS
- ACTIVITIES FOR ALL AGES
- BACKYARD FARMER GARDEN TOURS

SHOP FROM SMALL BUSINESSES OR  
 RUN YOUR OWN STALL!

Learn more at [discoverydays.unl.edu](http://discoverydays.unl.edu)

**NIANR**

The University of Nebraska does not discriminate based upon any protected status. Please see [go.unl.edu/nondiscrimination](http://go.unl.edu/nondiscrimination). ©2025 The University of Nebraska Board of Regents. All rights reserved. 2302.002

## Save the Dates

### More Spring Plant Sales!



All plant sales are at UNL East Campus greenhouses (2150 N. 38th St., Lincoln) unless otherwise noted. Check for updates at [plantnebraska.org](http://plantnebraska.org).

- May 1            Members Only Plant Sale, 4-7 p.m.
- May 2            Plant Sale, 12:30 - 4:30 p.m.
- May 3            Plant Sale, 9 a.m. - 12 noon
- May 10          Omaha Plant Sale  
Douglas-Sarpy County Ext. Office, 9 a.m. - 12 noon
- May 16          Plant Sale, 12:30-4:30 p.m.
- May 17          Plant Sale, 9 a.m. - 12 noon
- May 23          Plant Sale, 12:30-4:30 p.m.
- May 24          Plant Sale, 9 a.m. - 12 noon
- May 30          Plant Sale, 12:30-4:30 p.m.
- May 31          Plant Sale, 9 a.m. - 12 noon
- June 7            Wildflower Week Plant Sale, Gering, 8:30 - 11 a.m.
- June 13          Plant Sale, 12:30-4:30 p.m.
- June 14          Plant Sale, 9 a.m. - 12 noon
- June 21          Plant Sale at Fontenelle Forest, 9 a.m.- 12 noon
- June 21          Pollinator Party Plant Sale, Schramm Education Center, Gretna, 10 a.m. - 2 p.m.

**EVOLVED GARDENS**

Matrix style plantings, Prairie installation, Native plant expertise  
[evolved-gardens.com](http://evolved-gardens.com)

# WORLD'S TOP SHOWS COMING TO THE LIED CENTER

TICKETS TO MOST SHOWS **STARTING AT \$29**



MAR 20 - 23



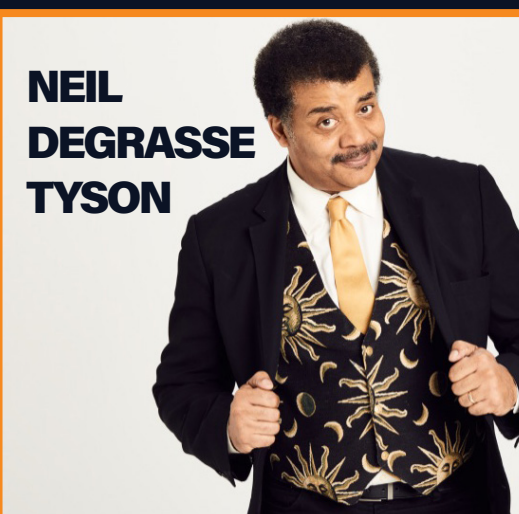
APR 5



APR 15



APR 19



APR 22



MAY 22

## MARCH

ANNIE MAR 20-23, 2025

THE BARRICADE BOYS MAR 29, 2025

## APRIL

PARSONS DANCE APR 5, 2025

THE UKULELE ORCHESTRA OF GREAT BRITAIN APR 9, 2025

METRO JAZZ QUINTET: BEBOP APR 11-12, 2025

ALTON BROWN LIVE: LAST BITE APR 15, 2025

ITZHAK PERLMAN, VIOLIN APR 19, 2025

NEIL DEGRASSE TYSON APRIL 22, 2025

## MAY

TAKE 3 MAY 4, 2025

ARRIVAL FROM SWEDEN: THE MUSIC OF ABBA MAY 22, 2025

**LIEDCENTER.ORG**

**LIED CENTER**  
FOR PERFORMING ARTS