

115 Hillcrest Drive, Seward, Nebraska

## The project

When the addition of a brick sign for the memorial was planned, we were aware that we would have a significant area to landscape where it would be placed. We studied how this landscaping could be used both as a benefit to the environment and be **symbolically important** to the memorial site. **Butterflies** have a significant meaning to those that grieve, and we chose to create a certified butterfly garden as the landscaping for the sign area. We obtained requirements for certification from the American Butterfly Association and proceeded with the design and plan that resulted in the certified garden that was completed the fall of 2016. The gardens complement the **sculptures** of the memorial to make a meaningful place for visitors.



## What we learned

- 1 Wet weather after planting affects drought hardy plants.
- 2 Educate. Visitors almost pulled milkweed meant for monarchs, thinking it a weed.
- 3 Many entities can come together smoothly when a project has a dedicated steward.



Rozanne Geranium  
*Geranium*



Prairie Smoke Geum  
*Geum triflorum*



Northwind Switchgrass  
*Panicum virgatum*



Raydon's Favorite Aster  
*Aster oblongifolius*

## Who's involved & costs

- American Butterfly Association
- Concordia University
- Faller Landscape (landscape design and plants)
- Heartfelt Incorporated Board of Directors

\$4,228

\$--

\$4,392

\$900

**\$9,520**

PAID BY GREENER TOWNS

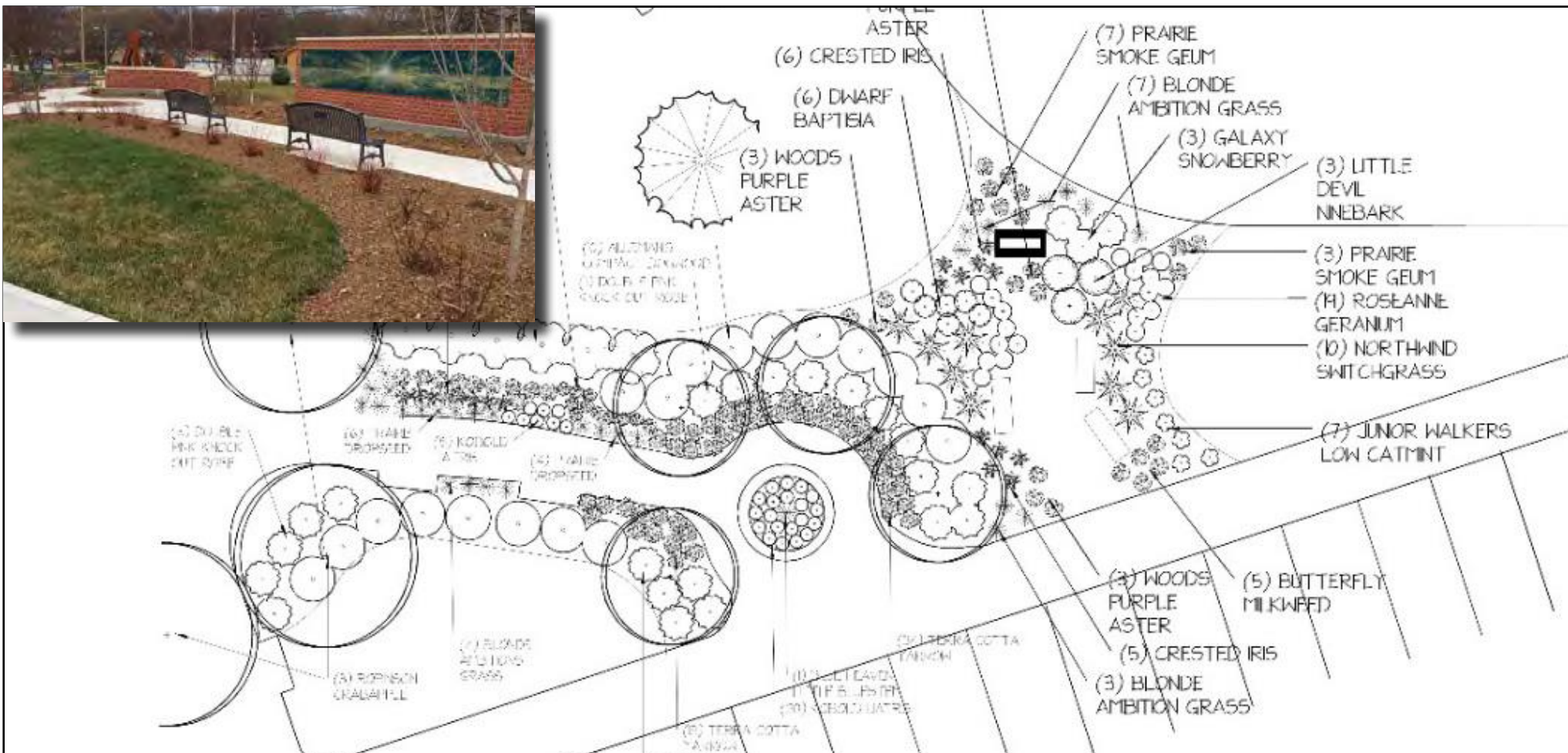
PAID BY OTHER GRANTS

PAID LOCALLY

DONATED TIME/GOODS

**PROJECT VALUE**

The Heartfelt Memorial is located on Concordia University's campus and is cared for by University staff.



Faller Landscape designed the landscape plan for the Memorial garden addition.

# Heartfelt Children's Memorial Garden

**GREENER TOWNS**



**NATIVE  
PLANTS**



**SAVES  
WATER**



**MENTAL  
RESTORATION**

