



PLANTS FOR NEBRASKA

Nebraska Statewide Arboretum

Planning a sustainable landscape project?
These proven performers can boost its beauty and resilience.

TREES



Pollinator Strong

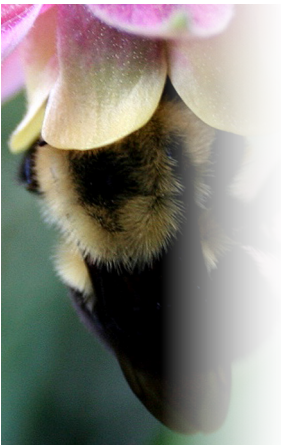
Oaks (*Quercus*), cherries (*Prunus*), and willows (*Salix*) feed the most butterfly and moth caterpillar species of any genus.

Eastern vs Western

A simplified division of Nebraska into different planting regions draws a diagonal line through Kearney and O'Neill.

There is room for interpretation along this line so it is important to know your local conditions.

LARGE 40'+ height	botanical name	region	sun	dry	ave	moist	wet
sugar maple	<i>Acer saccharum</i>	E	○	●	●		
bitternut hickory	<i>Carya cordiformis</i>	E	○	●	●		
pecan	<i>Carya illinoensis</i>	E	○	●	●		
shagbark hickory	<i>Carya ovata</i>	E	○	●	●		
northern catalpa	<i>Catalpa speciosa</i>	E/W	○	●	●	●	
hackberry	<i>Celtis occidentalis</i>	E/W	○	●	●	●	●
ginkgo	<i>Ginkgo biloba</i>	E	○	●	●	●	
Kentucky coffeetree	<i>Gymnocladus dioica</i>	E/W	○	●	●	●	●
tulip tree	<i>Liriodendron tulipifera</i>	E	○	●	●		
Norway spruce	<i>Picea abies</i>	E/W	○	●	●		
Black Hills spruce	<i>Picea glauca</i>	E/W	○	●	●		
ponderosa pine	<i>Pinus ponderosa</i>	E/W	○	●	●		
Rocky Mountain douglas fir	<i>Pseudotsuga menziesii</i>	E/W	○	●	●	●	
white oak	<i>Quercus alba</i>	E/W	○	●	●	●	
swamp white oak	<i>Quercus bicolor</i>	E/W	○	●	●	●	●
scarlet oak	<i>Quercus coccinea</i>	E	○	●	●		
shingle oak	<i>Quercus imbricaria</i>	E	○	●	●		
bur oak	<i>Quercus macrocarpa</i>	E/W	○	●	●	●	
chinkapin oak	<i>Quercus muehlenbergii</i>	E/W	○	●	●	●	
red oak	<i>Quercus rubra</i>	E/W	○	●	●	●	
black oak	<i>Quercus velutina</i>	E	○	●	●	●	
bald cypress	<i>Taxodium distichum</i>	E	○	●	●	●	●
American linden	<i>Tilia americana</i>	E/W	○	●	●	●	
hybrid elm cultivars	<i>Ulmus</i> 'Princeton', 'Morton'	E/W	○	●	●	●	●
MEDIUM 20' to 40' height	botanical name	region	sun	dry	ave	moist	wet
bigtooth maple	<i>Acer grandidentatum</i>	W	○	●	●	●	
boxelder maple	<i>Acer negundo</i>	E/W	○	●	●	●	●
Shantung maple	<i>Acer truncatum</i>	E/W	○	●	●	●	
Ohio buckeye	<i>Aesculus glabra</i>	E/W	○	●	●	●	
black alder	<i>Alnus glutinosa</i>	E	○	●	●	●	●
yellowwood	<i>Cladrastis kentukea</i>	E/W	○	●	●	●	
Turkish filbert	<i>Corylus colurna</i>	E/W	○	●	●	●	
Rocky Mountain juniper	<i>Juniperus scopulorum</i>	W	○	●	●		
osage orange	<i>Maclura pomifera</i>	E	○	●	●	●	
cucumber magnolia	<i>Magnolia acuminata</i>	E	○	●	●	●	
black gum	<i>Nyssa sylvatica</i>	E	○	●	●	●	●
quaking aspen	<i>Populus tremuloides</i>	E/W	○	●	●	●	
black cherry	<i>Prunus serotina</i>	E/W	○	●	●	●	
David elm	<i>Ulmus davidiana</i>	E	○	●	●	●	
lacebark elm	<i>Ulmus parvifolia</i>	E	○	●	●	●	
Japanese zelkova	<i>Zelkova serrata</i>	E	○	●	●	●	
SMALL 12' to 20' height	botanical name	region	sun	dry	ave	moist	wet
Tatarian maple	<i>Acer tataricum</i>	E/W	○	●	●	●	



MORE TREES

shadblow serviceberry	Amelanchier canadensis	E	○	◐	◑	●	▲	▲
pawpaw	Asimina triloba	E	○	◐	◑	●	▲	▲
American hornbeam	Carpinus caroliniana	E	○	◐	◑	●	▲	▲
Corneliancherry dogwood	Cornus mas	E/W	○	◐	◑	●	▲	▲
Hawthorn	Crataegus spp.	E/W	○	◐	◑	●	▲	▲
crabapple	Malus spp.	E/W	○	◐	◑	●	▲	▲
American hophornbeam	Ostrya virginiana	E/W	○	◐	◑	●	▲	▲
gambel oak	Quercus gambelii	W	○	◐	◑	●	▲	▲
dwarf chinkapin oak	Quercus prinoides	E/w	○	◐	◑	●	▲	▲

SHRUBS

For the Bees

Plant woodies with early spring blooms like hazelnut (*Corylus*) and plum (*Prunus*) to feed bees when other flowers are scarce.



LARGE 12'-15'+ height	botanical name	region	sun	dry	ave	moist	wet
buttonbush	<i>Cephalanthus occidentalis</i>	E/W	○	◐	◑	●	▲
vernal witch hazel	<i>Hamamelis vernalis</i>	E	○	◐	◑	●	▲
common witch hazel	<i>Hamamelis virginiana</i>	E/W	○	◐	◑	●	▲
staghorn sumac	<i>Rhus typhina</i>	E/W	○	◐	◑	●	▲
elderberry	<i>Sambucus canadensis</i>	E/W	○	◐	◑	●	▲
silver buffaloberry	<i>Shepherdia argentea</i>	E/W	○	◐	◑	●	▲
common lilac	<i>Syringa vulgaris</i>	E/W	○	◐	◑	●	▲
wayfaringtree viburnum	<i>Viburnum lentago</i>	E/W	○	◐	◑	●	▲
nannyberry viburnum	<i>Viburnum lentago</i>	E/W	○	◐	◑	●	▲
blackhaw viburnum	<i>Viburnum prunifolium</i>	E/W	○	◐	◑	●	▲
cranberrybush viburnum	<i>Viburnum trilobum</i>	E/W	○	◐	◑	●	▲

MEDIUM 8'-12' height	botanical name	region	sun	dry	ave	moist	wet
bottlebrush buckeye	<i>Aesculus parviflora</i>	E	○	◐	◑	●	▲
silky dogwood	<i>Cornus amomum</i>	E/W	○	◐	◑	●	▲
gray dogwood	<i>Cornus racemosa</i>	E/W	○	◐	◑	●	▲
American hazelnut	<i>Corylus americana</i>	E/W	○	◐	◑	●	▲
spreading cotoneaster	<i>Cotoneaster divaricatus</i>	E/W	○	◐	◑	●	▲
eastern wahoo	<i>Euonymus atropurpureus</i>	E/W	○	◐	◑	●	▲
panicle hydrangea	<i>Hydrangea pan.</i> 'Pee Gee', 'Tardiva'	E/W	○	◐	◑	●	▲
spice bush	<i>Lindera benzoin</i>	E	○	◐	◑	●	▲
Nanking cherry	<i>Prunus tomentosa</i>	E/W	○	◐	◑	●	▲
fragrant sumac	<i>Rhus aromatica</i>	E/W	○	◐	◑	●	▲
prairie willow	<i>Salix humilis</i>	E/W	○	◐	◑	●	▲
arrowwood viburnum	<i>Viburnum dentatum</i>	E/W	○	◐	◑	●	▲

Wild Harvest

Many native trees and shrubs taste delicious in a fruit pie, including serviceberry, chokecherry, elderberry and buffaloberry.

SMALL 4'-6' height	botanical name	region	sun	dry	ave	moist	wet
Saskatoon serviceberry	<i>Amelanchier alnifolia</i> 'Regent'	E/W	○	◐	◑	●	▲
red chokeberry	<i>Aronia arbutifolia</i>	E/W	○	◐	◑	●	▲
black chokeberry	<i>Aronia melanocarpa</i>	E/W	○	◐	◑	●	▲
Sugarshack buttonbush	<i>Cephalanthus occ.</i> 'Sugarshack'	E/W	○	◐	◑	●	▲
summersweet	<i>Clethra alnifolia</i>	E	○	◐	◑	●	▲
red twig dogwood	<i>Cornus sericea</i>	E/W	○	◐	◑	●	▲
oakleaf hydrangea	<i>Hydrangea quercifolia</i>	E	○	◐	◑	●	▲
Virginia sweetspire	<i>Itea virginica</i>	E	○	◐	◑	●	▲
spreading chinese juniper	<i>Juniperus chinensis</i> 'Armstrong'	E/W	○	◐	◑	●	▲
chinese juniper	<i>Juniperus c.</i> 'Pfitzeriana', 'Seagreen'	E/W	○	◐	◑	●	▲
common ninebark	<i>Physocarpus opulifolius</i>	E/W	○	◐	◑	●	▲
dwarf mugo pine	<i>Pinus mugo</i> var. <i>pumilio</i>	E/W	○	◐	◑	●	▲
golden/clove currant	<i>Ribes aureum/odoratum</i>	E/W	○	◐	◑	●	▲
Iceberg Alley Willow	<i>Salix candida</i> 'Iceberg Alley'	E	○	◐	◑	●	▲
dwarf lilac	<i>Syringa meyeri</i>	E/W	○	◐	◑	●	▲

MORE SHRUBS

Understanding Soil Conditions

Dry: soil dries quickly after rain, no irrigation.

Average: soil dries quickly a few days after rain, no irrigations.

Moist: soil dries a few days after rain but is irrigated, or soil dries slowly after rain with no irrigation.

Wet: soil remains soggy for a week+ after rain.

LOW 1'-3' height	botanical name	region	sun	dry	ave	moist	wet
Miss Kim lilac	<i>Syringa pubescens</i> 'Miss Kim'	E/W	☉ ☾	● ●			
Korean Spice viburnum	<i>Viburnum carlesii</i>	W	☉ ☾ ●	● ●			
Ground Hug aronia	<i>Aronia</i> 'Ground Hug'	E	☉ ☾	● ● ●			
bluebeard	<i>Caryopteris x cladonensis</i>	E	☉		● ●		
Huron dogwood	<i>Cornus racemosa</i> 'Hurzam'	E/W	☉ ☾ ●	● ● ●			●
shrubby St. John's wort	<i>Hypericum prolificum</i>	E	☉ ☾		● ●		
spreading chinese juniper	<i>Juniperus chinensis</i> 'Sargent'	E/W	☉		● ● ●		●
common juniper	<i>Juniperus comm.</i> 'Blueberry Delight'	E/W	☉ ☾	● ● ●			
creeping juniper	<i>Juniperus horizontalis</i>	E/W	☉		● ●		
creeping mahonia	<i>Mahonia reptans</i>	E/W	☉ ☾	● ●			
dwarf mugo pine	<i>Pinus m. var. pumilio</i> , 'Slowmound'	E/W	☉ ☉		● ●		
shrubby cinquefoil	<i>Potentilla fruticosa</i>	E/W	☉ ☾		● ●		●
Pawnee Buttes sandcherry	<i>Prunus .besseyii</i> 'Pawnee Buttes'	E/W	☉ ☾	● ● ●			
Autumn Amber sumac	<i>Rhus aromatica</i> 'Autumn Amber'	W	☉		● ●		
red currant	<i>Ribes rubrum</i> 'Red Lake'	E/W	☉ ☾	● ●			
birchleaf spirea	<i>Spirea betulifolia</i>	E	☉		● ●		●

PLANTS



LARGE 36" to 72" height	botanical name	region	sun	dry	ave	moist	wet
Arkansas bluestar	<i>Amsonia hubrichtii</i>	E/W	☉ ☾		● ●		
swamp milkweed	<i>Asclepias incarnata</i>	E/W	☉ ☾		● ●		●
blue indigo	<i>Baptisia australis</i>	E/W	☉ ☾	● ● ●			●
Gateway joe pye	<i>Eutrochium maculatum</i> 'Gateway'	E	☉ ☾	● ● ●			●
Helen's flower	<i>Helenium autumnale</i>	E	☉ ☾		● ●		
wild quinine	<i>Parthenium integrifolium</i>	E/W	☉ ☾			● ●	●
sweet coneflower	<i>Rudbeckia subtomentosa</i>	E/W	☉ ☾		● ●		●
pitcher sage	<i>Salvia azurea</i>	E/W	☉		● ●		
compass plant	<i>Silphium laciniatum</i>	E	☉		● ●		
purple meadow rue	<i>Thalictrum dasycarpum</i>	E	☉ ☾ ●	● ●			
Carolina lupine	<i>Thermopsis villosa</i>	E/W	☉		● ●		●
Culver's root	<i>Veronicastrum virginicum</i>	E	☉ ☾		● ●		
MED 18" to 36" height	botanical name	region	sun	dry	ave	moist	wet
Coronation Gold yarrow	<i>Achillea filipend.</i> 'Coronation Gold'	E/W	☉ ☾		● ●		●
common yarrow	<i>Achillea millefolium</i>	E/W	☉ ☾		● ●		●
Moonshine yarrow	<i>Achillea</i> 'Moonshine'	E/W	☉		● ●		●
eastern columbine	<i>Aquilegia canadensis</i>	E/W	☉ ☾ ●		● ●		
butterfly milkweed	<i>Asclepias tuberosa</i>	E/W	☉ ☾			● ●	●
dwarf blue indigo	<i>Baptisia minor</i>	E/W	☉ ☾	● ● ●			●
turtlehead	<i>Chelone lyonii</i>	E	☉ ☾ ●	● ● ●			●
lanceleaf coreopsis	<i>Coreopsis lanceolata</i>	E/W	☉ ☾		● ●		●
stiff coreopsis	<i>Coreopsis palmata</i>	E/W	☉ ☾			● ●	●
plains coreopsis	<i>Coreopsis tinctoria</i>	W	☉		● ●		●
Ozark coneflower	<i>Echinacea paradoxa</i>	E/W	☉		● ●		●
purple coneflower	<i>Echinacea purpurea</i>	E/W	☉ ☾		● ●		●
rattlesnake master	<i>Eryngium yuccifolium</i>	E/W	☉ ☾		● ●		●
bottle gentian	<i>Gentiana andrewsii</i>	E	☉ ☾		● ●		●
dotted blazingstar	<i>Liatris punctata</i>	E/W	☉ ☾		● ●		●
spiked gayfeather	<i>Liatris spicata</i>	E	☉		● ●		
scaly blazing star	<i>Liatris squarrosa</i>	E/W	☉ ☾		● ●		●
prairie flax	<i>Linum lewisii</i>	E/W	☉ ☾		● ●		●
beebalm cultivars	<i>Monarda didyma</i> 'Jacob Kline' etc.	E	☉ ☾	● ● ●			
Walker's low catmint	<i>Nepeta xfaassenii</i> 'Walker's Low'	E/W	☉ ☾		● ●		
shell-leaf penstemon	<i>Penstemon grandiflorus</i>	E/W	☉ ☾		● ●		●

Love Soil and Water

Prairie plants build healthy soil with their deep, dense roots that also clean water and filter pollutants.

MORE PLANTS



Less Weeds More Wow

Underplant showy species with groundhuggers like poppymallow, *Geranium* and *Heuchera* to prevent weeds from taking root.

hairy penstemon	<i>Penstemon hirsutus</i>	E/W	○ ●	●	●	●
woodland phlox	<i>Phlox divaricata</i>	E	● ●	●	●	
slender mountainmint	<i>Pycnanthemum tenuifolium</i>	E/W	○ ●	●	●	●
prairie coneflower	<i>Ratibida columnifera</i>	E/W	○		●	●
brown-eyed Susan	<i>Rudbeckia triloba</i>	E/W	○	●	●	●
Bluebird aster	<i>Symphotrichum laeve</i> 'Bluebird'	E/W	○ ●	●	●	●
October Skies aster	<i>Symp. oblongifolius</i> 'October Skies'	E/W	○ ●	●	●	●
sky blue aster	<i>Symphotrichum oolentangiensis</i>	E/W	○ ●	●	●	●
hoary vervain	<i>Verbena stricta</i>	E/W	○		●	●
heartleaf alexanders	<i>Zizia aptera</i>	E	○ ●	●	●	●

SMALL 6" to 18" height	botanical name	region	sun	dry	ave	moist	wet
prairie onion	<i>Allium stellatum</i>	E/W	○ ●	●	●	●	
Logan Calhoun mallow	<i>Callirhoe alcaeoides</i> 'Logan Calhoun'	E/W	○ ●	●	●	●	
purple poppymallow	<i>Callirhoe involucrata</i>	E/W	○ ●	●	●	●	
purple prairie clover	<i>Dalea purpurea</i>	E/W	○	●	●		
Biokovo geranium	<i>Geranium cantabrigiense</i> 'Biokovo'	E/W	○ ●	●	●	●	
bigroot geranium	<i>Geranium macrorhizum</i>	E/W	● ●	●	●	●	
prairie smoke	<i>Geum triflorum</i>	E/W	○	●	●		
alumroot	<i>Heuchera richardsonii</i>	E/W	○ ●	●	●	●	●
Missouri primrose	<i>Oenothera macrocarpa</i>	E/W	○		●	●	●
pasqueflower	<i>Pulsatilla patens</i>	E/W	○	●	●		
red pasqueflower	<i>Pulsatilla vulgaris</i>	E/W	○ ●	●	●		
prairie petunia	<i>Ruellia humilis</i>	E/W	○ ●	●	●	●	
Snow Flurry heath aster	<i>Symph. ericoides</i> 'Snow Flurry'	E/W	○ ●	●	●	●	
dwarf spiderwort	<i>Tradescantia tharpii</i>	E/W	○ ●	●	●	●	

GRASSES



Street Solutions

Native prairie grasses tolerate drought, heat and salt, making them viable options for roadside planting.

LARGE 36" to 72" height	botanical name	region	sun	dry	ave	moist	wet
big bluestem	<i>Andropogon gerardii</i>	E/W	○		●	●	
Autumn Red miscanthus	<i>Miscanthus .. purpurascens</i> 'Autumn Red'	E	○ ●	●	●	●	
switchgrass	<i>Panicum virgatum</i>	E/W	○ ●		●	●	●
giant sacaton	<i>Sporobolus wrightii</i>	E/W	○		●	●	●

MEDIUM 18" to 36" height	botanical name	region	sun	dry	ave	moist	wet
sideoats grama	<i>Bouteloua curtipendula</i>	E/W	○ ●		●	●	
Blonde Ambition blue grama	<i>Bouteloua gracilis</i> 'Blonde Ambition'	E/W	○		●	●	
palm sedge	<i>Carex muskingumensis</i>	E/W	○ ● ●		●	●	●
Pennsylvania sedge	<i>Carex pensylvanica</i>	E	○ ●		●	●	●
Sprengel's sedge	<i>Carex sprengelii</i>	E/W	○ ● ●	●	●	●	
sand lovegrass	<i>Eragrostis trichodes</i>	E/W	○		●	●	●
Junegrass	<i>Koeleria macrantha</i>	E	○		●	●	
little bluestem	<i>Schizachyrium scoparium</i>	E/W	○ ●		●	●	●
prairie dropseed	<i>Sporobolus heterolepis</i>	E/W	○ ●		●	●	●

SMALL 6" to 18" height	botanical name	region	sun	dry	ave	moist	wet
buffalograss	<i>Bouteloua dactyloides</i>	W	○		●	●	
blue grama	<i>Bouteloua gracilis</i>	E/W	○		●	●	●
oak sedge	<i>Carex albicans</i>	E	○ ● ●		●	●	●
Appalachian sedge	<i>Carex appalachica</i>	E	○ ● ●		●	●	●
plains oval sedge	<i>Carex brevior</i>	E/W	○ ●		●	●	●

For more plant lists and design ideas, visit plantnebraska.org