

Railside Drive, Schuyler, Nebraska

The project

This native plant Garden and bioswale were part of the dream that Jim Kluck had for the Railside Green Arboretum. We want to impress upon people that through landscape **management** (rather than *maintenance*) native plantings can adapt to soil and environmental conditions. By *managing* a garden as a dynamic, evolving plant community rather than *maintaining* it as a static object that can't change, we have the opportunity to **work with nature** rather than spend energy fighting it.

These plantings are providing shelter and **food for wildlife**, and require less water which is a huge benefit to our environment. They also show that native plants make sense in terms of sustainability and create visual interest at the same time.



Volunteers planting the new bioswale at Railside Green Arboretum.

What we learned

- 1 With busy schedules, it's hard to pick a date that maximizes volunteer participation.
- 2 Weather was a major factor in our initial planting.
- 3 Recognizing garden plants from weeds is harder than we thought.



American Elderberry
Sambucus canadensis



Culver's Root
Veronicastrum virginicum



Little Joe Pye Plant
Eupatorium dubium



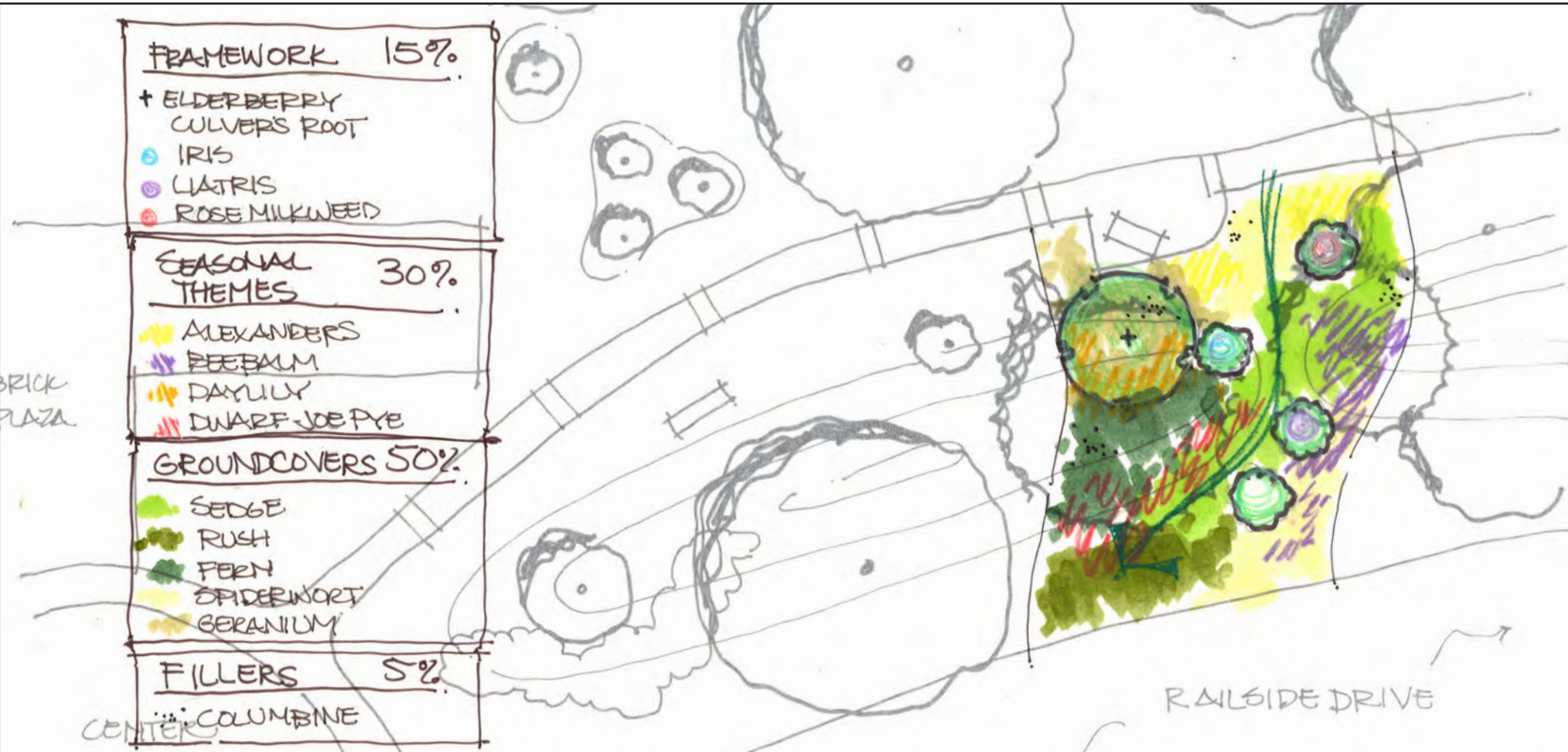
Palm Sedge
Carex muskingumensis

Who's involved & costs

- Railside Green Arboretum Green Team
- Schuyler High School FFA
- Schuyler Garden Club
- City of Schuyler

\$ 3,963
\$ --
\$ 380
\$ 4,533
\$ 8,876

PAID BY GREENER TOWNS
PAID BY OTHER GRANTS
PAID LOCALLY
DONATED TIME/GOODS
PROJECT VALUE



Planting design for the Railside Green Arboretum bioswale that replaced a spot in the lawn that often flooded.

Railside Green Arboretum Gardens

GREENER TOWNS



NATIVE
PLANTS



CLEANS
WATER



POLLINATORS

