

Designing a more Beautiful LINCOLN



Brown Bag Gathering
Sponsored by



What is Lincoln Parks & Recreation



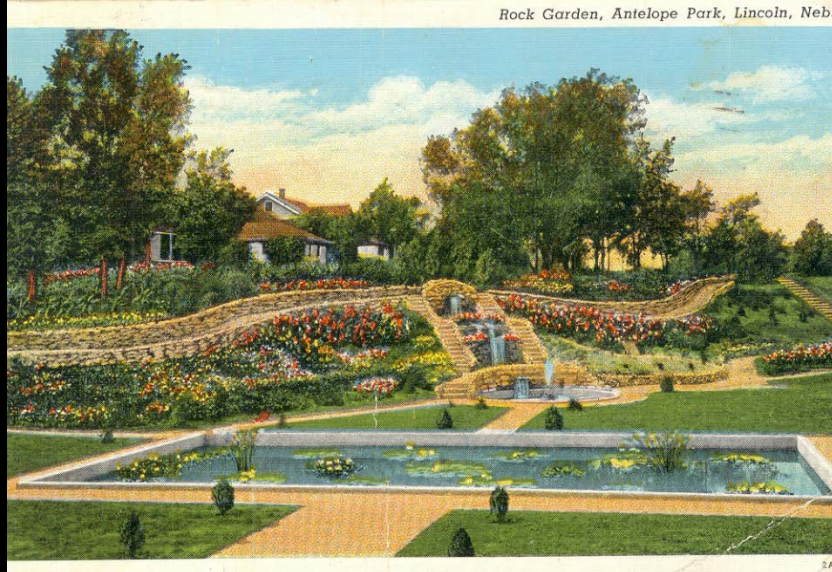
- More than 125 Parks
- 131 miles of trails
- 7 Recreation Centers
- 5 Golf Courses
- 85 Playgrounds
- 2 Skateparks
- 9 Pools
- 11 Display Fountains
- 24 Lighted Ball Fields
- 9.5 Acres of Play Courts
- 220 Buildings
- 55 Acres of Parking Lots
- 11 Miles of Park Roads
- 32 Miles of Park Walkways
- 135,000 Public Trees
- 40 Public Artworks

Rich History of Public Spaces

Auld Pavilion, Antelope Park, Lincoln, Neb.



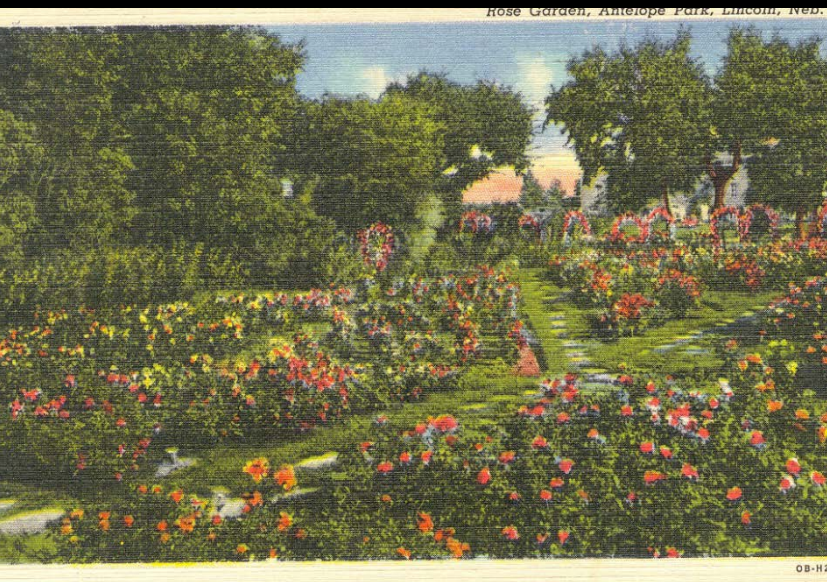
Rock Garden, Antelope Park, Lincoln, Neb.



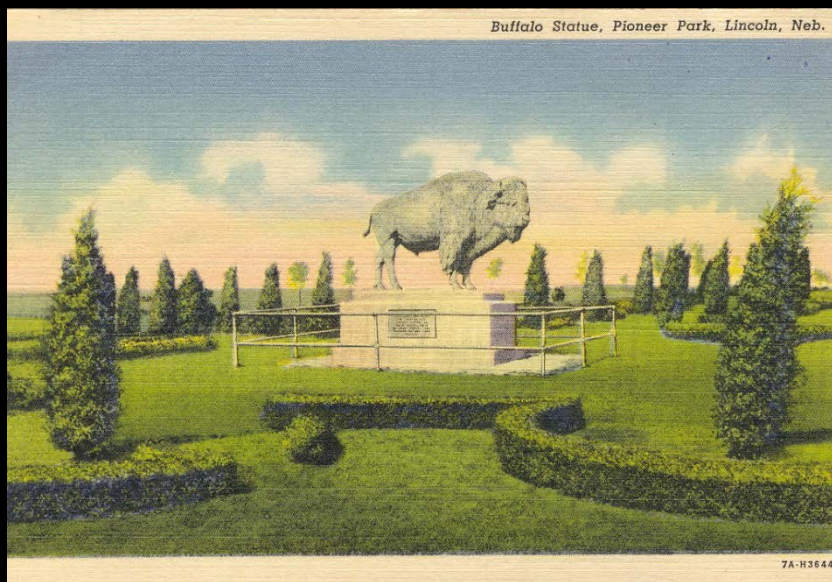
27th and C Street Entrance, Antelope Park, Lincoln, Neb.



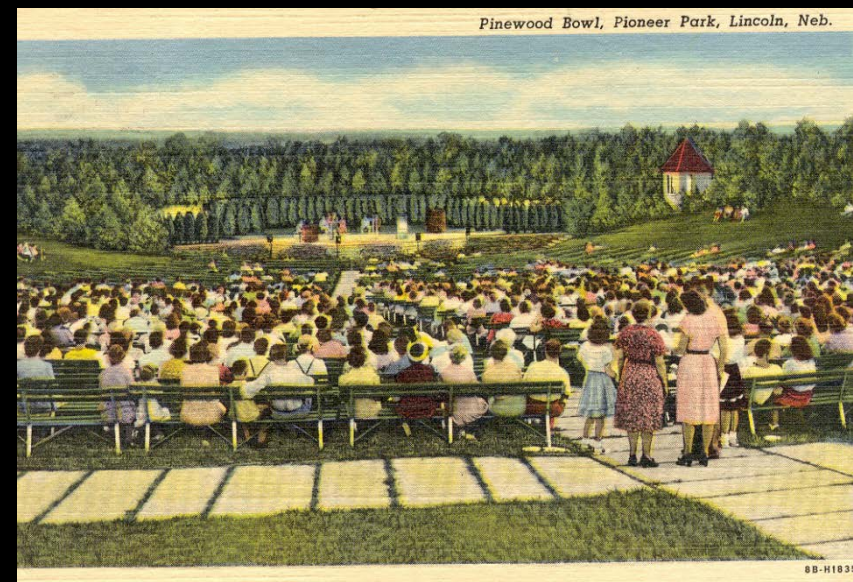
Rose Garden, Antelope Park, Lincoln, Neb.



Buffalo Statue, Pioneer Park, Lincoln, Neb.



Pinewood Bowl, Pioneer Park, Lincoln, Neb.



Objective

- To provide a rich variety of display gardens, landscape styles and plant materials for the enjoyment and education of local, regional and international visitors. Including the opportunity to learn about the significant historical, cultural and ecological roles such landscapes play in the community.



Collections



Exotic

Victorian

Traditional

English
Border

Nebraska Style

Stylized Prairie

Native



Stewardship



Diversity

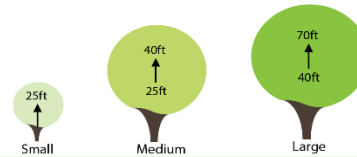


Approved Trees for Streets

Revised June 2013

Trees Organized by Size

Large Trees (40ft - 70ft)	Genus	Species	Cultivar	Height	Width	Primary Shape	Color	Cultural Conditions
Planetree								
Bloodgood London Planetree	Platanus	x acerifolia	'Bloodgood'	60	40	pyramidal	Yellow(F)	(D2)(FS)
Columbia London Planetree	Platanus	x acerifolia	'Columbia'	60	40	pyramidal	Bronze(F)	(D2)(FS)
Elm								
Accolade Elm	Ulmus	japonica x wilsoniana	'Morton'	70	60	vase	Yellow (F)	(W,D2)(PS,FS)
Allee Elm	Ulmus	parvifolia	'Allee'	60	45	vase	Yellow (F)	(D2)(PS,FS)
New Harmony Elm	Ulmus	americana	'New Harmony'	50	50	vase	Yellow (F)	(D2)(FS)
Prospector Elm	Ulmus	wilsoniana	'Prospector'	50	40	vase	Yellow (F)	(W,D2)(PS,FS)
Valley Forge Elm	Ulmus	americana	'Valley Forge'	70	60	vase	Yellow (F)	(W,D2)(FS)
Cathedral Elm	Ulmus	x	'Cathedral'	50	50	vase	Yellow (F)	(PS,FS)
Triumph Elm	Ulmus	x (complex hybrid)	'Morton Glossy'	55	45	vase	Yellow (F)	(W,D2)(PS,FS)
New Horizon Elm	Ulmus	japonica x pumila	'New Horizon'	40	25	pyramidal	Yellow (F)	(PS,FS)
Pioneer Elm	Ulmus	glabra x parpinifolia	'Pioneer'	50	50	round	Yellow (F)	(D2) (FS)
Vanguard Elm	Ulmus	japonica x pumila	'Morton Plainsman'	45	40	round	Yellow (F)	(D2)(PS,FS)
Discovery Elm	Ulmus	davidiana	'Discovery'	45	35	vase	Yellow (F)	(PS,FS)
Honeylocust								
Northern Acclaim Honeylocust	Gleditsia	triacanthos	'Harve'	45	35	vase	Yellow (F)	(D2)(PS,FS)
Moraine Honeylocust	Gleditsia	triacanthos	'Moraine'	45	40	vase	Yellow (F)	(D2)(FS)
Shademaster Honeylult	Gleditsia	triacanthos var. inermis	'Shademaster'	45	35	broad	Yellow (F)	D2, FS
Skyline Honeylocust	Gleditsia	triacanthos var. inermis	'Skyline'	45	35	pyramidal	Gold (F)	D2, FS
Linden								
American Linden	Tilia	americana		60	40	pyramidal	White/Yellow Fwrs(S) Yellow(F)	(W)(FS,PS)
Greenspire Linden	Tilia	cordatata	'Greenspire'	40	30	pyramidal	Yellow(F)	(D1)(FS)
Redmond Linden	Tilia	americana	'Redmond'	40	25	pyramidal	Yellow(F)	(D1)(FS)
Sterling Silver Linden	Tilia	tomentosa	'Sterling'	60	35	pyramidal	Yellow(F)	(D1)(FS)
Maple								
Black Sugar Maple	Acer	nigrum		80	40	pyramidal	Yellow/Orange/Red(F)	(FS,PS)
Autumn Spire Red Maple	Acer	rubrum	'Autumn Spire'	50	25	columnar	Red Flwrs(S) Red(F)	(W)(FS)
Autumn Blaze Freeman Maple	Acer	x freemanii		50	30	columnar	Red(S)	(D1)(FS)
Redpointe Maple	Acer	rubrum	'Frank Jr.'	45	30	pyramidal	Red	(D1)(FS)
Legacy Sugar Maple	Acer	saccharum	'Legacy'	50	35	pyramidal	Red-Orange(F)	(D1)(FS)
Celebration Freeman Maple	Acer	x freemanii	'Celebration'	45	25	pyramidal	Yellow(F)	(D1-D2)(FS)
Marmo Freeman Maple	Acer	x freemanii	'Marmo'	55	45	pyramidal	Red-Orange(F)	(D1)(PS,FS)
Sienna Glen Maple	Acer	x freemanii	'Sienna'	45	35	pyramidal	Red-Orange(F)	(W,D1)(FS)



<http://lincoln.ne.gov/city/parks/CommunityForestry/trees.htm>

Collaboration of Design



Consultants

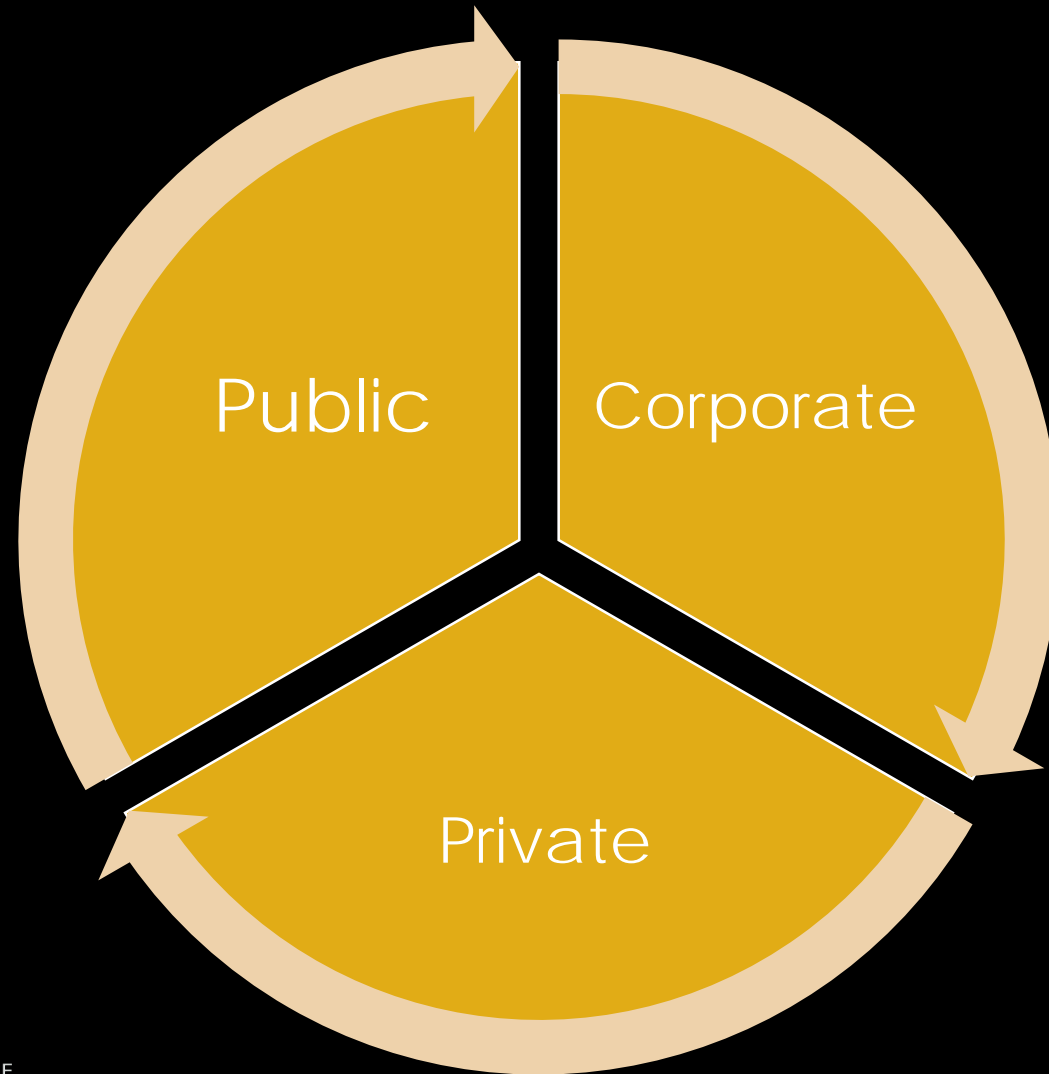


Staff Members



Neighborhood Associations

Collaboration of Funding



Collaboration of Volunteers



CORNHUSKER COUNCIL
BOY SCOUTS OF AMERICA

The Big Idea has a BIG Impact!
Saturday, April 25th, Mahoney Park



Boyscouts



Neighborhood Associations

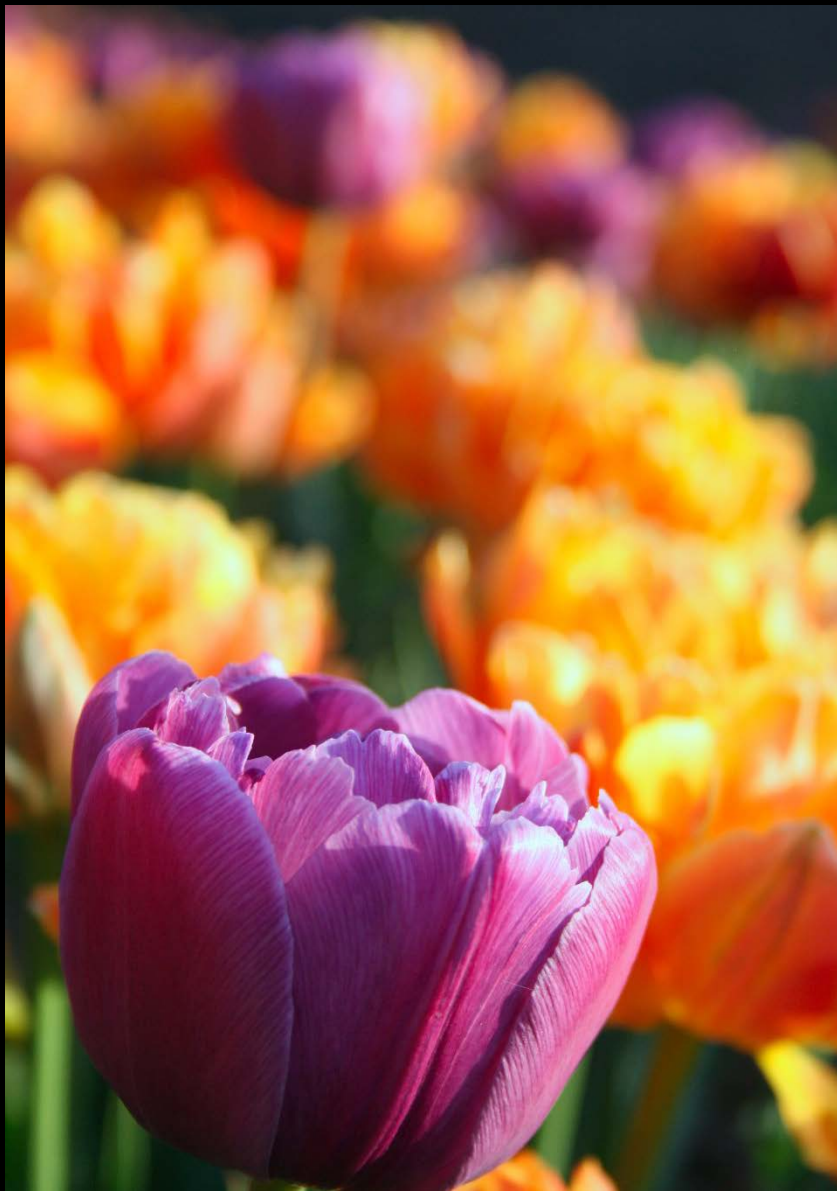


Master Gardeners

Designing a more Beautiful

LINCOLN TOUR







Sunken Gardens

- *Over 35,000 annuals are planted by volunteers on a yearly basis*
- *Water Gardens include mix of hardy & tropical lilies, papyrus, Black Taro, Water Iris, Lotus, Arroheads, Anacharis, Water lettuce*
- *Over 8,000 spring bulbs are planted each fall*
- *Perennial Gardens include: English Border Garden, Shade garden and White Garden*
- *Shrub Collection includes rhododendrons, azaleas, hydrangeas and viburnums*
- *Over 100 new trees were planted when the garden was renovated in 2005.*
- *Named one of the best 300 Gardens to visit in North America by National Geographic.*



May 2, 2013



May 2, 2014



April 16, 2015



Summer 2006



Summer 2008



Summer 2014





Hamann Rose Garden

- *Includes over 100 varieties of roses including Floribunda, Hybrid Tea and Grandiflora.*
- *Additional roses include Mini roses and climbers.*
- *Traditional knot garden plants including boxwood, barberry and juniper.*



Scabiosa 'Butterfly Blue' & Bumble Bee



Sargent Crabapple with Tulip Clusiana



Rose hips provide winter interest



The "Joy" Fountain is the focal point of the formal rose garden with custom tiles depicting an arts and crafts inspired rose.

Rotary Strolling Garden

- *Informal garden with emphasis on pairing roses with compatible ornamental grasses and perennials.*
- *Layout of garden begins with English boarder style on the west and works into Nebraska style to the east.*
- *Series of roses groupings include easy elegance, Canadian parkland, modern, drift, knockout, meidiland, buck and rugose*
- *A labyrinth located in the turf area is the design of a rose*
- *More than 50 varieties of perennials and grasses are located throughout the garden.*





Miscanthus 'Purpurascens'



Aster novae-angliae 'Purple Dome'



Solidago sp. 'Wichita Mountains'



Prairie inspired combinations



Monarchs really do like butterfly bush



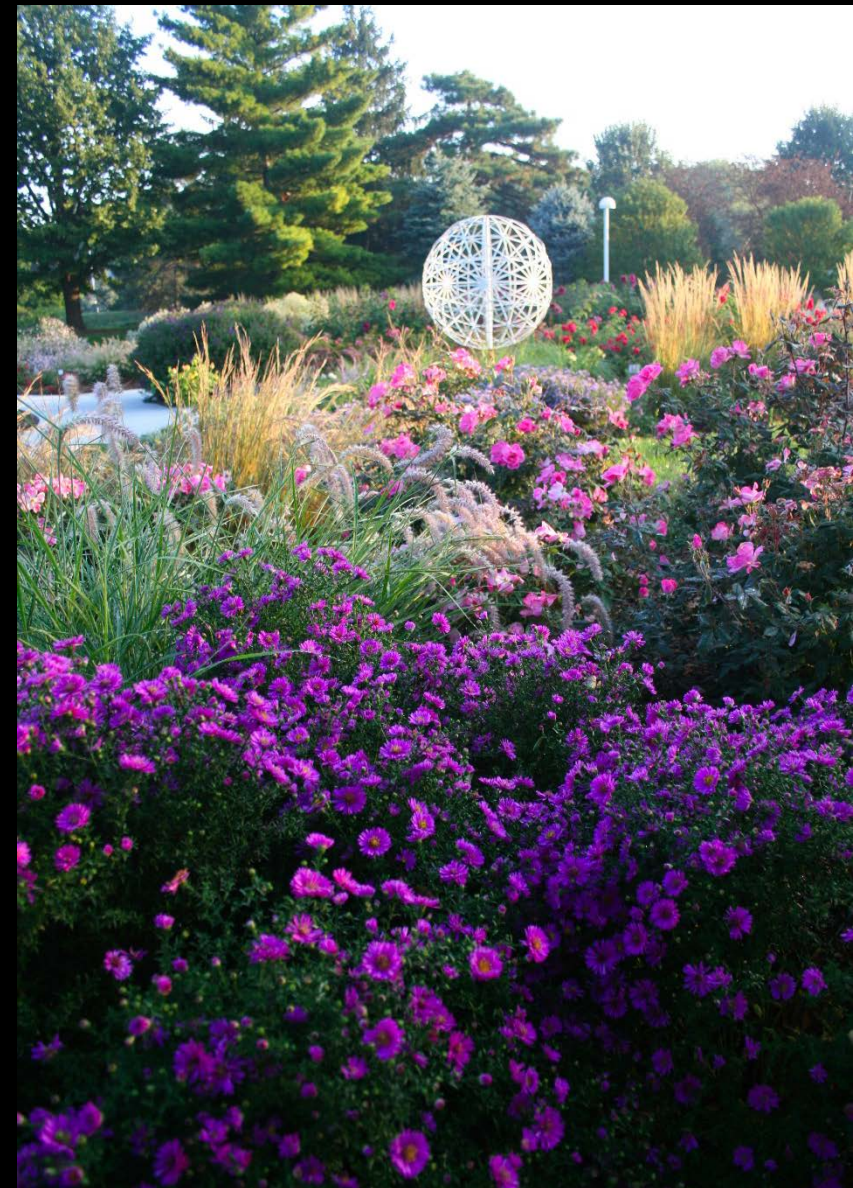
The mixing of natives and non-natives



Iris sibirica 'Caesar's Brother'



Baptisia 'Solar Flare'



Aster Novi-Belgii 'Magic Purple'







Hazel Abel Park

- *Victorian inspired park located in the Near South Neighborhood.*
- *Original design inspired by a visit to Central Park, NY by Alice Abel*
- *Park dedicated to Hazel Abel, mother of Alice and Nebraska's first elected woman senator in 1954.*
- *Emphasis on white with hydrangea hedge, white roses and viburnum.*
- *Checkerboard playground adds whimsy to the more serious elements of the park*
- *Popular spot for senior pictures and weddings.*







Hydrangea arborescens 'Incrediball'



Narcissus 'Mount Hood'



The golden leaves of the *Ginkgo biloba*





Government Square Park

- Small urban park located at 10th & O Streets.
- Reminiscent of original park on the corner that featured artesian well.
- Fountain design includes replicas the corn and mile maidens once featured in the old Cornhusker Hotel.
- Purple is the dominate color because of its association with justice and regalness





Rosa 'Midnight Blue'



Allium paired with Sykes Oakleaf Hydrangea



Heuchera 'Brownies'



Agastache 'Blue Fortune' Hyssop



Schizachyrium scoparium 'Blaze'



Allium 'Mongolian Gem'



Holmes Lake Golf Clubhouse

- *Landscape inspired by the architecture of the clubhouse*
- *Contrast to the manicured green lawn*
- *Incorporate plants attractive to pollinators in large swaths*
- *Low maintenance and low water requirements*

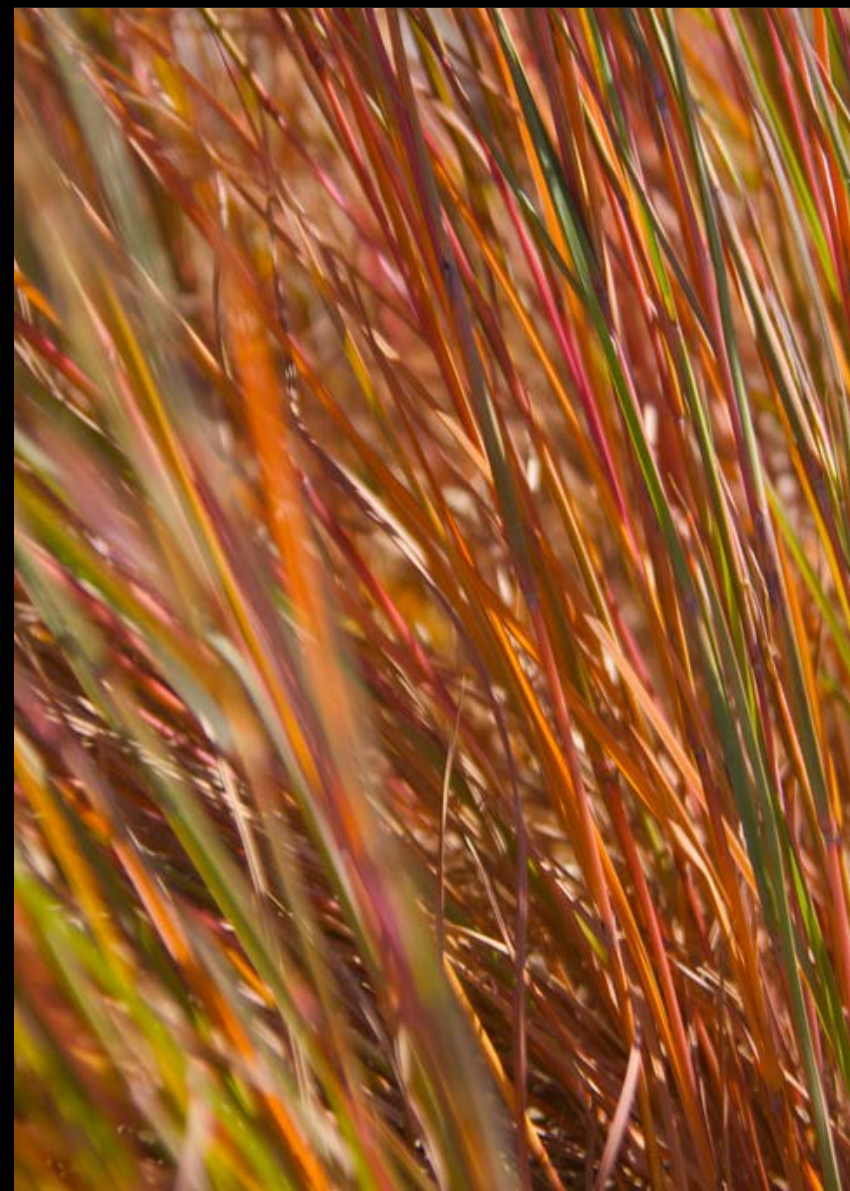




Bouteloua gracilis 'Blond Ambition'



Aster oblongifolius 'Raydon's Favorite'



Schizachyrium scoparium 'Blaze'



Parks Building Rain Garden

- *Located at the Parks & Recreation Admin. Building*
- *Three different rain gardens with different planting concepts.*
- *Incorporates native and native like plant materials to accomplish the benefits of slowing and filtering storm water runoff.*



Shawnee Brave Baldcypress (*Taxodium distichum* 'Shawnee Brave')



Mongolian Gem Allium (*Allium* 'Mongolian Gem')



Limelight Hydrangea (*Hydrangea paniculata* 'Limelight')

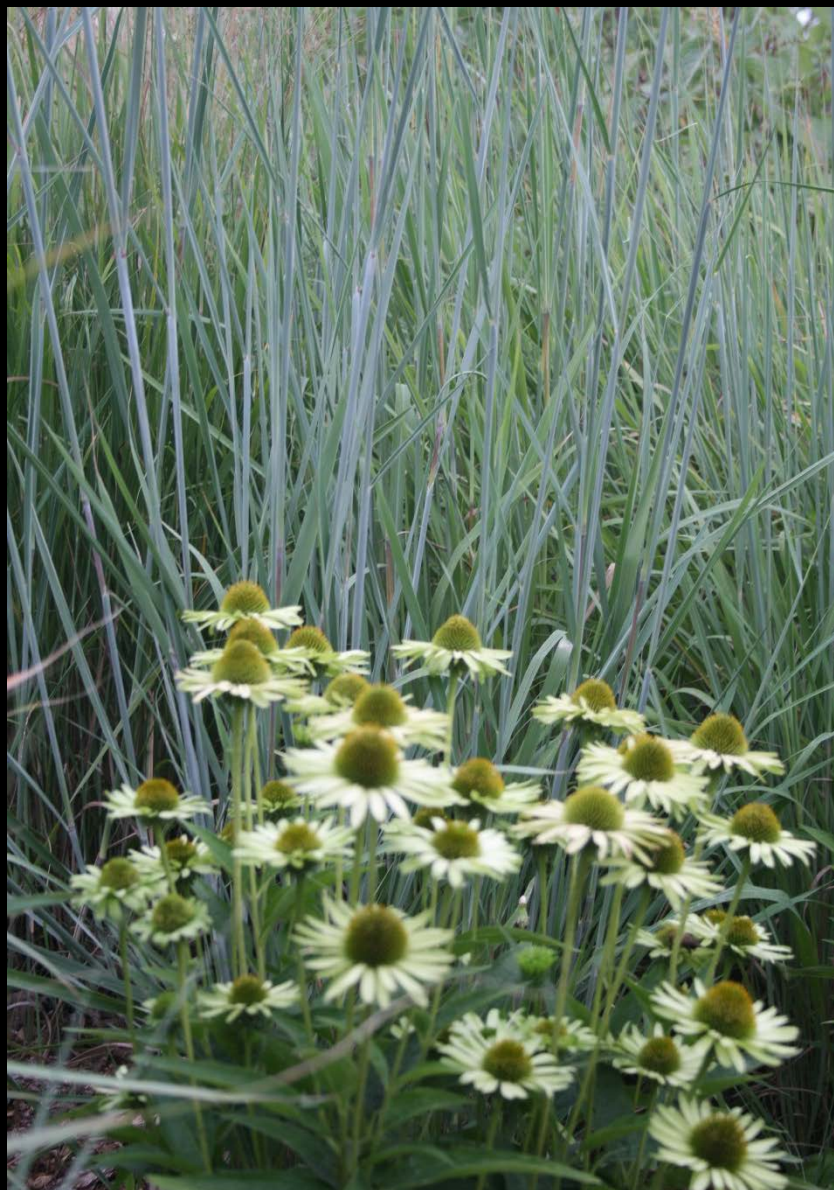


Rain Garden using native grasses and sedges





Sisyrinchium montanum



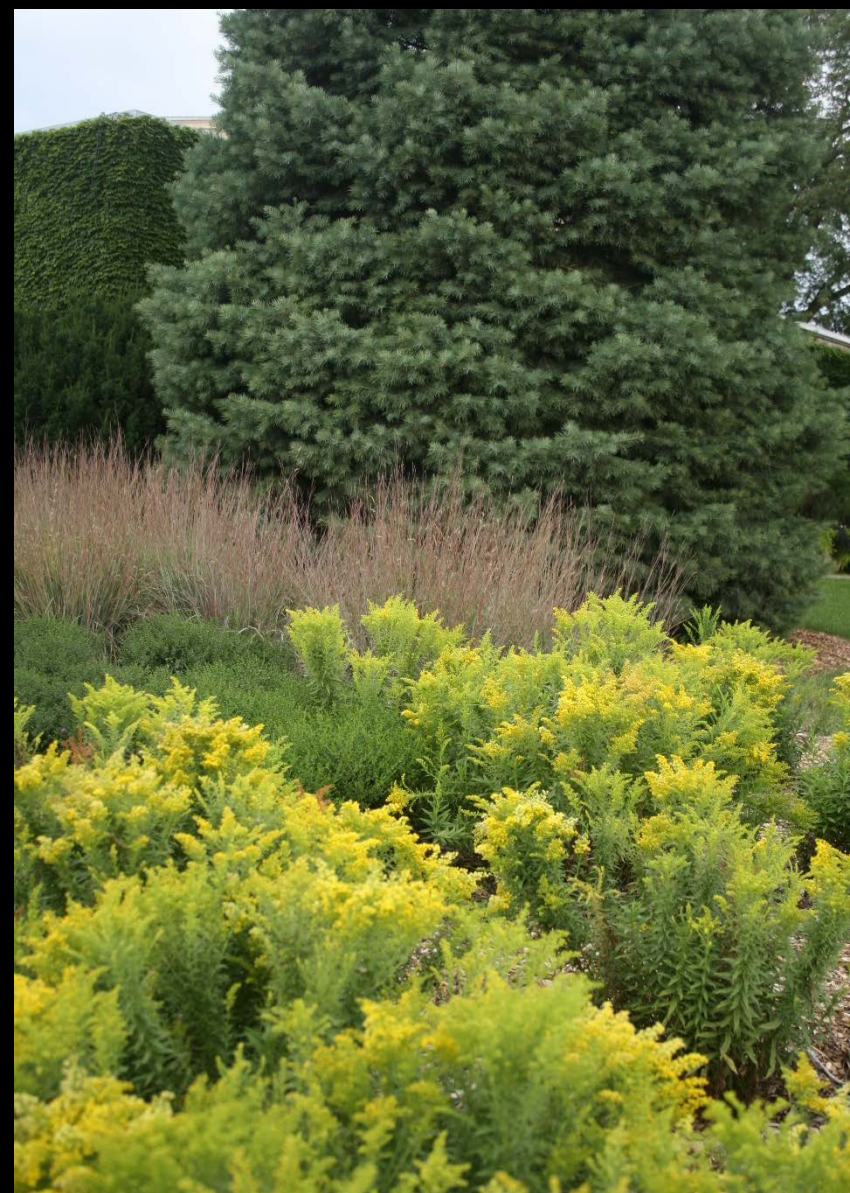
Echinacea 'Green Jewel' with Andropogon



Baptisia australis



False Indigo (*Baptisia australis*)



Little Lemon Goldenrod (Solidago 'Dansolitem' Little Lemon)





Union Plaza



- Six acre urban park located north of "O" Street between 21st and 22nd streets
- Part of roadway & stormwater improvement project of Antelope Valley
- Public & Privately funded
- Offers one of the areas largest collections of native plants
- Recent addition includes a 20,000 sq. ft. pollinator garden focusing on milkweed.













Nekan Pitcher Sage (*Salvia azurea*)



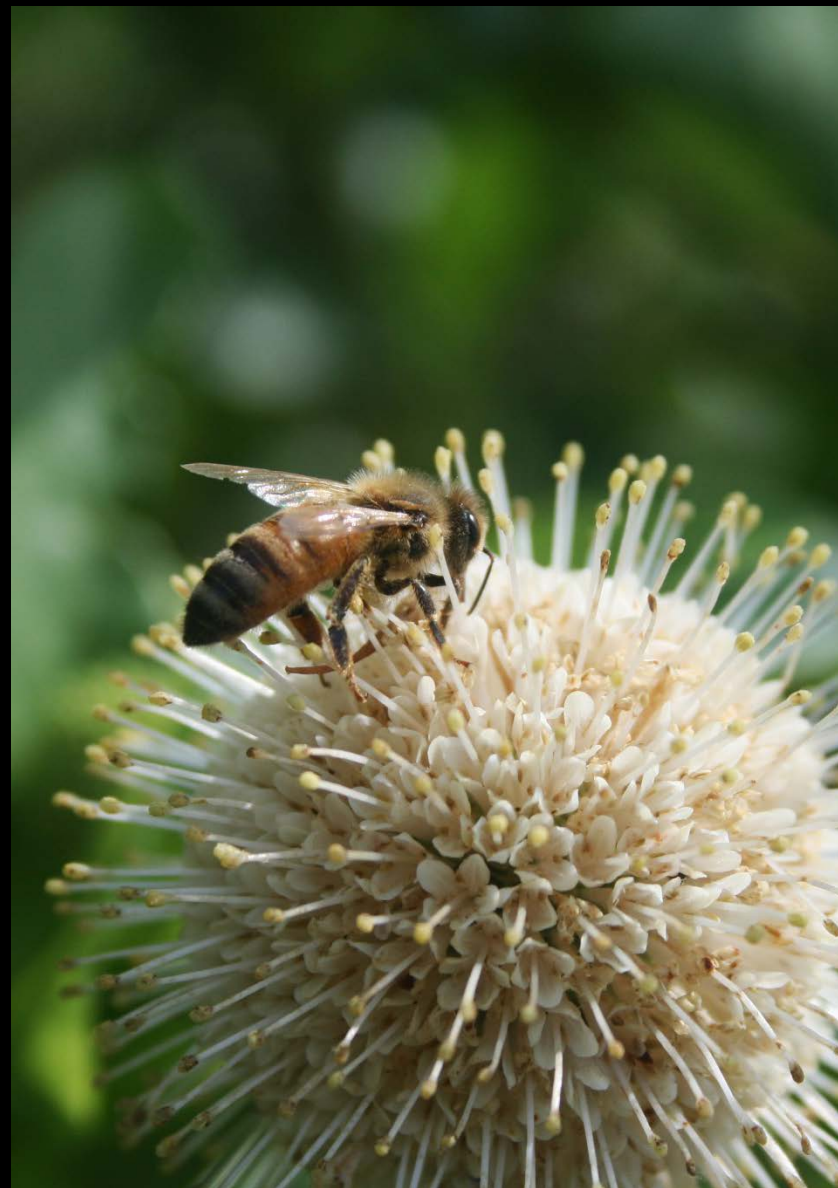
Missouri Primrose (*Oenothera missouriensis*)



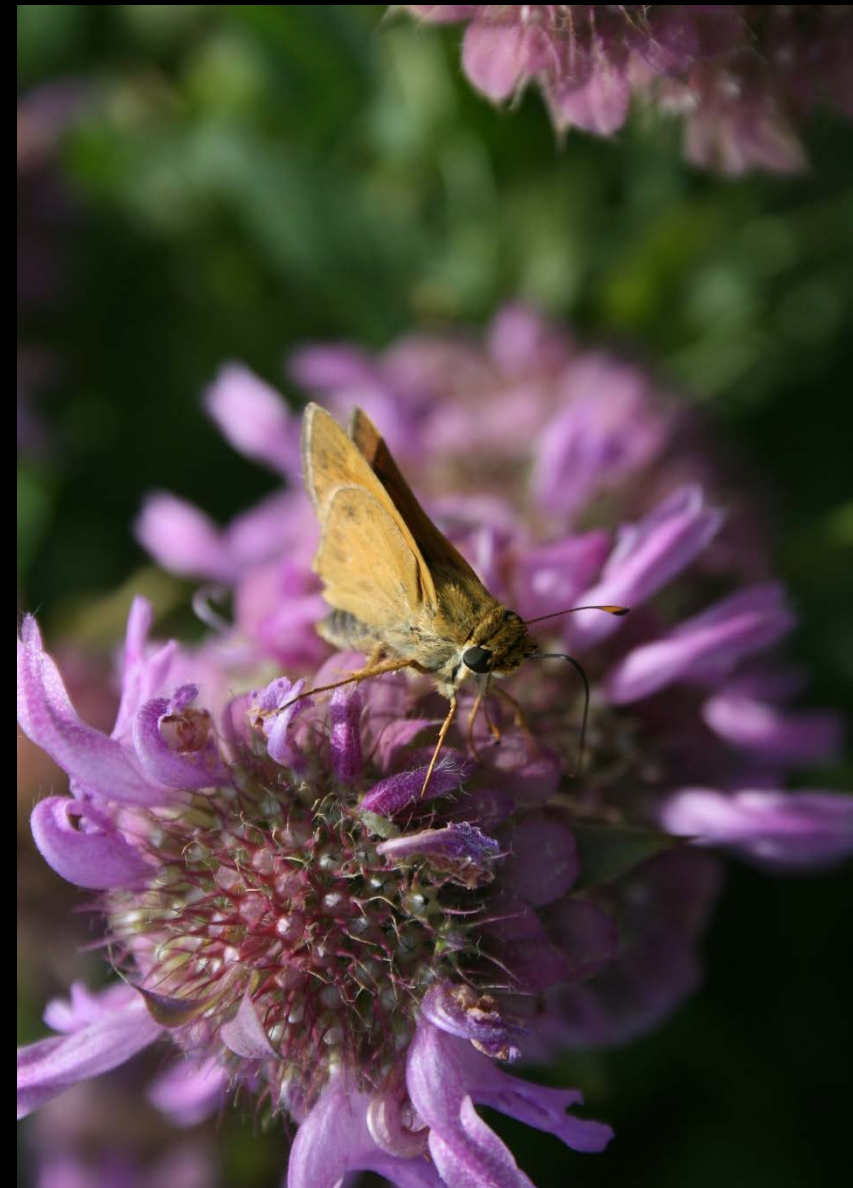
Rattlesnake Master (*Eryngium yuccifolium*)



Purple Prairie Clover (*Dalea purpurea*)



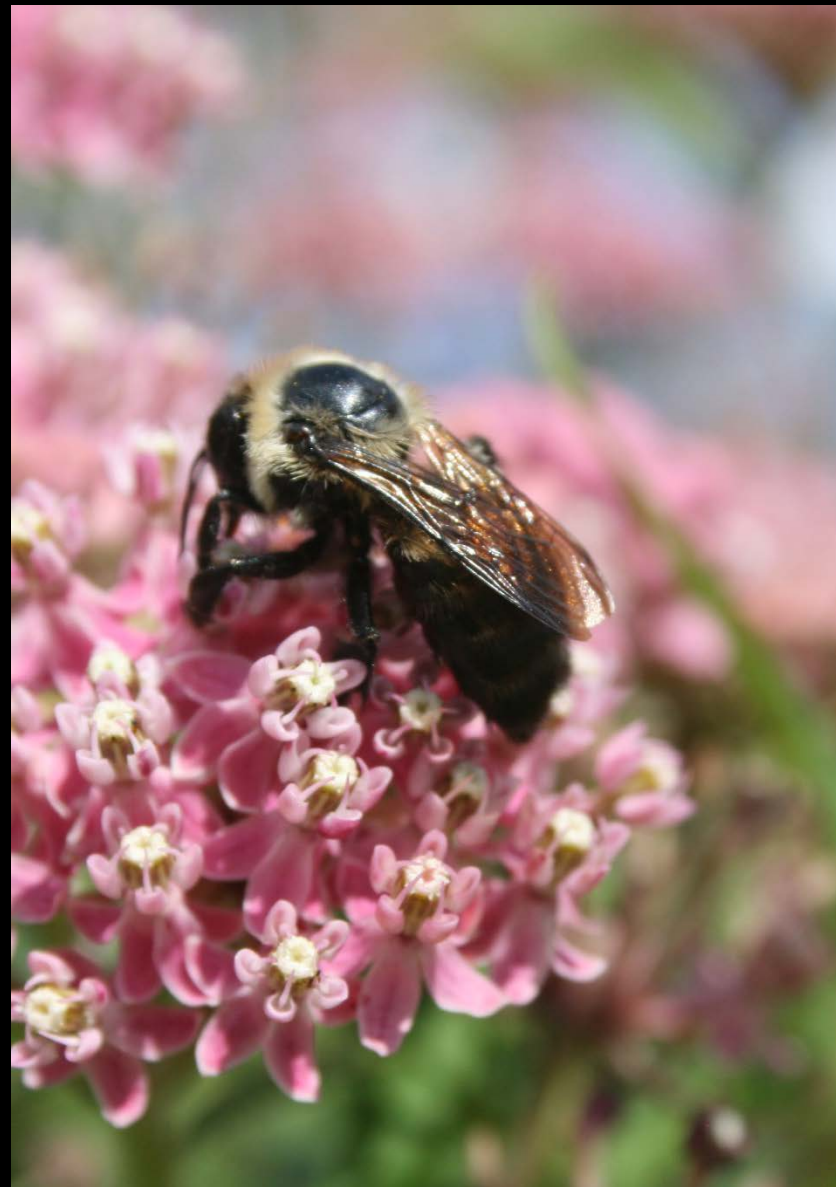
Buttonbush (*Celphalanthus occidentalis*)



Bee Balm (*Monarda* sp.)



Butterfly Milkweed (*Asclepias tuberosa*)



Swamp Milkweed (*Asclepias incarnate*)



Cinderella Milkweed (*Asclepias incarnate* 'Cinderella')



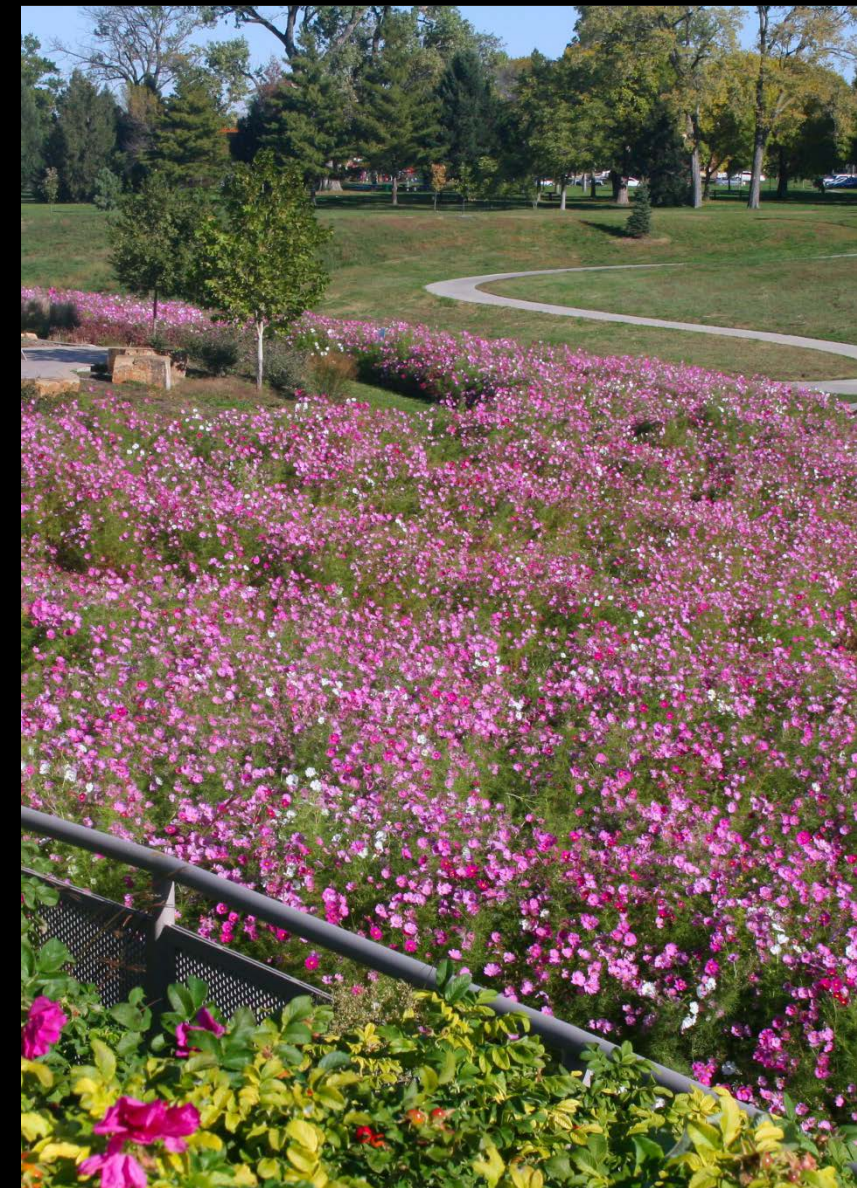
Purple Coneflower (*Echinacea purpurea*)



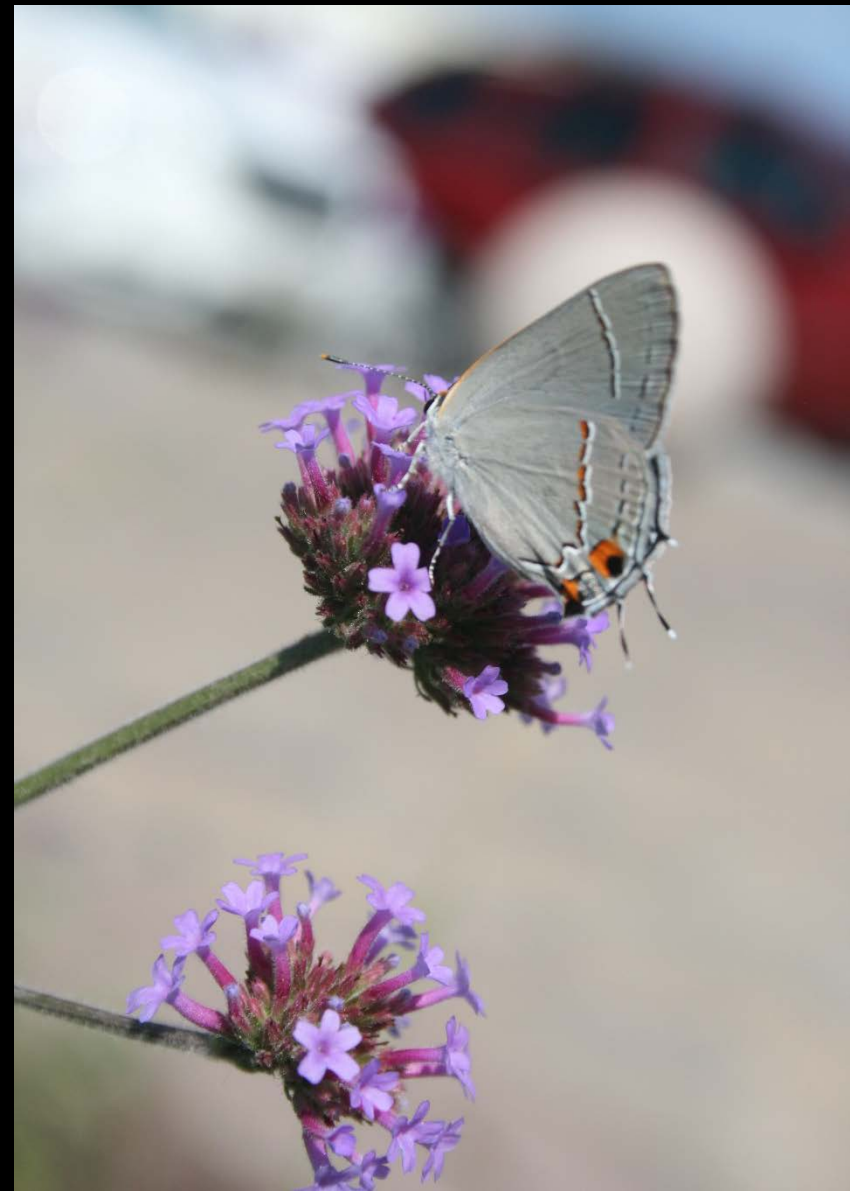
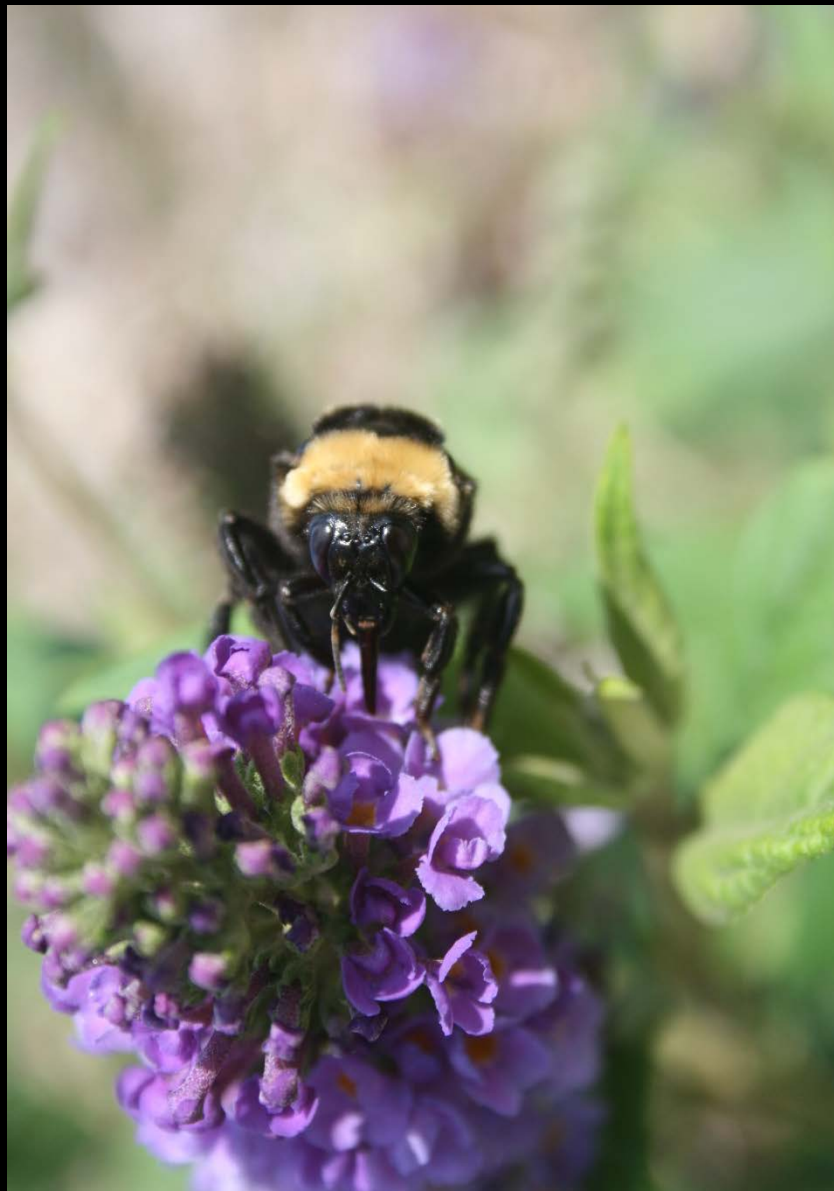
False Sunflower(*Heliopsis helianthus*)



Sky Blue Aster (*Aster oolentangiensis*)











Prairie in the Park



Prairiegrass Mixture (Prairie 3 Plus Prairie Grass)



Blue Grama
Bouteloua gracilis

Little Bluestem
Scizachyrium scoparium gracilis

Sideoats Grama
Bouteloua curtipendula

Buffalograss
Bouteloua dactyloides

- A mix chosen for its short and mid-height, warm-season prairiegrasses that is are beneficial for landscaping, wildlife habitat, and erosion control.
- The plants range in height from 1' - 3' with Buffalo grass being the shortest.
- The mix provided green color in the hot summer months before changing to beautiful reds and golden browns in the fall and winter.

Wildflower Mixture (Pioneer Wildflower Mix)



- Wildflowers selected for their adaptive nature to poor soil in areas of low to moderate rainfall.
- Combination of annuals (reproduce annually) with perennials extend the season of blooming and continual change in color.
- Height ranges from 24" - 36"

New Park Development





Pioneers Park

- *668 acres of tallgrass prairie, woodlands, wetlands and a stream*
- *The Nature Center has served Lincoln as an environmental education center and wildlife sanctuary since 1963.*
- *Eight miles of hiking trails.*
- *Native Plant Collections in gardens as well as in virgin prairie.*

Conservation Areas



- *Highlands South*
- *Shoemaker Marsh*
- *King Saline Wetlands*
- *Pioneers Park Nature Center*
- *Wilderness Park*



Tower Square

- An 18,000 square foot park highland by a 57' tall, internally illuminated multicolor column, known as Ascent Tower by artist Jun Kaneko.
- The entire space was designed by Jun Kaneko and thought of as one giant art piece inspired by Japanese sand gardens.
- Minimalistic plantings include sedges and native grasses, Golden Rain Tree, Honeylocust, Taylor Juniper and Columnar White Pine

Centennial Mall



- Originally built in 1967 – it serves as a public gathering space between Nebraska's State Capital and the University of Nebraska
- Upgrade in fountains, pavement and landscaping.
- Incorporates “green” strategies for storm water management, energy use and natural resource utilization.

Entry Way Corridor



- Includes pavement repairs and streetscape enhancements along W. Adams Street, NW 12th Street, W. Cornhusker Highway and 9th/10th Streets at S
- Over 800 new trees will be planted
- Over 50,000 native perennials, grasses and forbs.
- Street tree and planting areas are irrigated
- Art Components
- Welcoming Banners

QUESTIONS?

Designing a more Beautiful
LINCOLN



Brown Bag Gathering
Sponsored by

