

# Saving our Pollinators

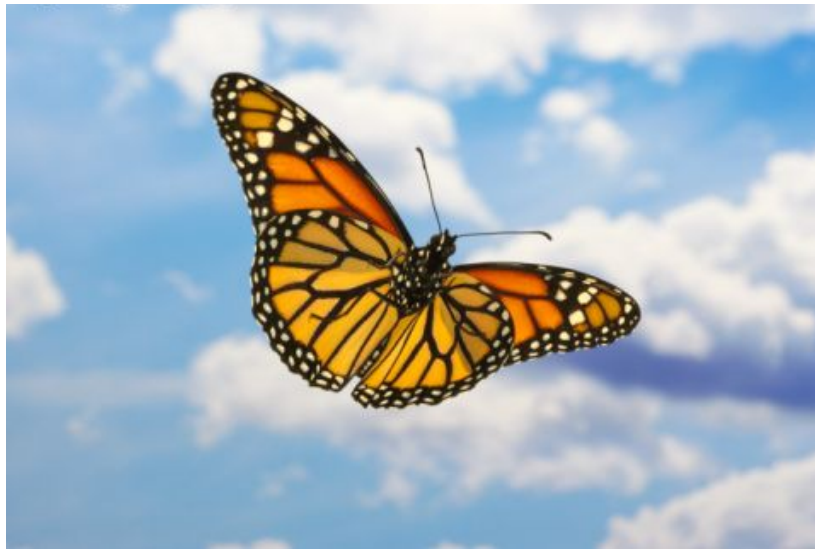
Becoming a Hero via your  
own Back Yard Part II

---

# "Super Generation"

## \*Fall Migration

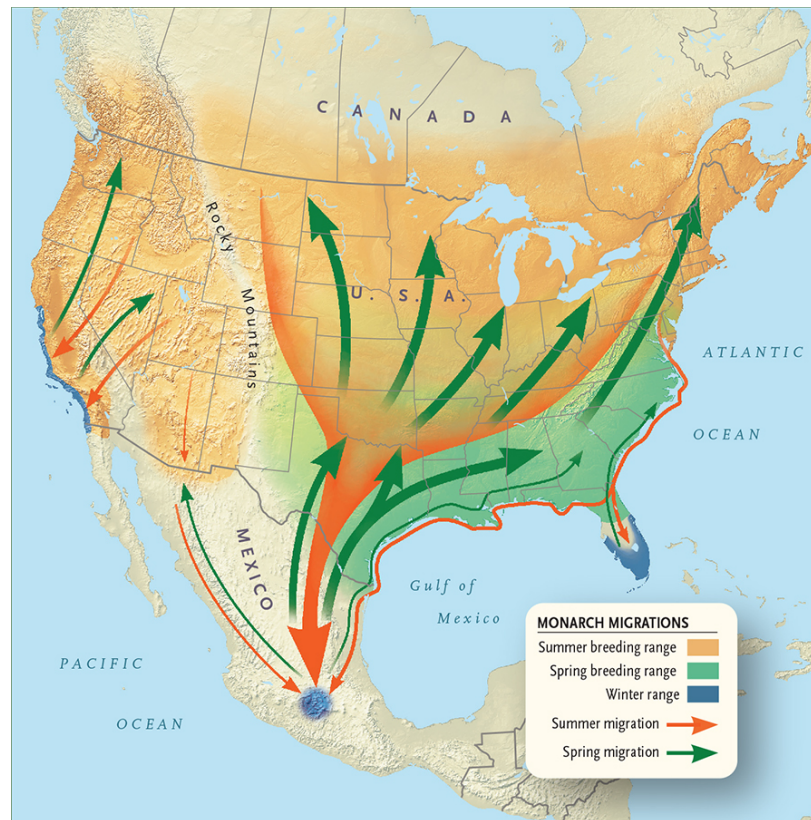
- 4th or "Super Generation" butterflies are bigger & stronger, don't mate at this time, & fly to Mexico living 6 to 8 months





# Spring Migration

- Hibernators mate & fly north where they lay eggs



# We traveled to Central Mexico to see overwintering Monarchs

- Located in Mexico State 2hrs west of Mexico city



# Planes

- Flew to Mexico City



Headed to Mexico 🇲🇪 maybe... can't get  
Mike's boarding pass...

# Taxi

- Through Mexico City to the Bus Terminal



# Bus

- Very comfortable & a great way to see the countryside between Mexico City & Zitacuaro.



# Local Taxi

- Very likely a cousin of our Bed & Breakfast's host.





# Macheros

- Small rural village of about 300 people at the base of Cerro Pelon





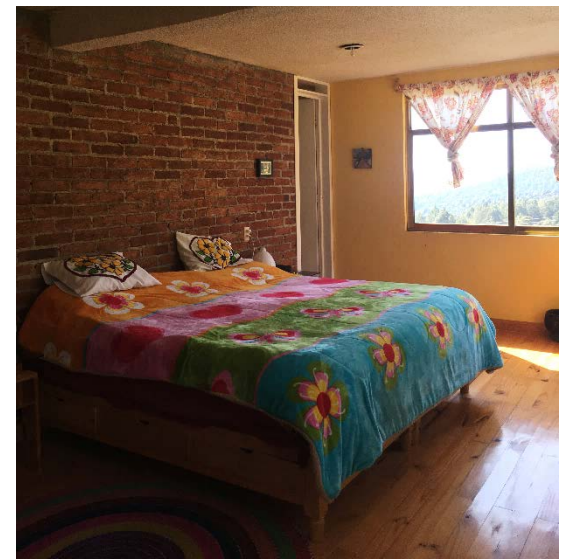
# Macheros



# J.M Butterfly Bed and Breakfast

- Definitely home away from home.
- The whole village was welcoming & safe
- Opportunity to get a “real” rural Mexico experience
- Opportunity to get money in the hands of the people who care for & protect the migrating monarchs.

# J.M Butterfly Bed and Breakfast





# J.M Butterfly Bed and Breakfast – Socializing





We visited 3 overwintering sites  
while there...

- Cerro Pelon
- El Rosario
- Piedra Herrada

# Cerro Pelon

- Cerro Pelon

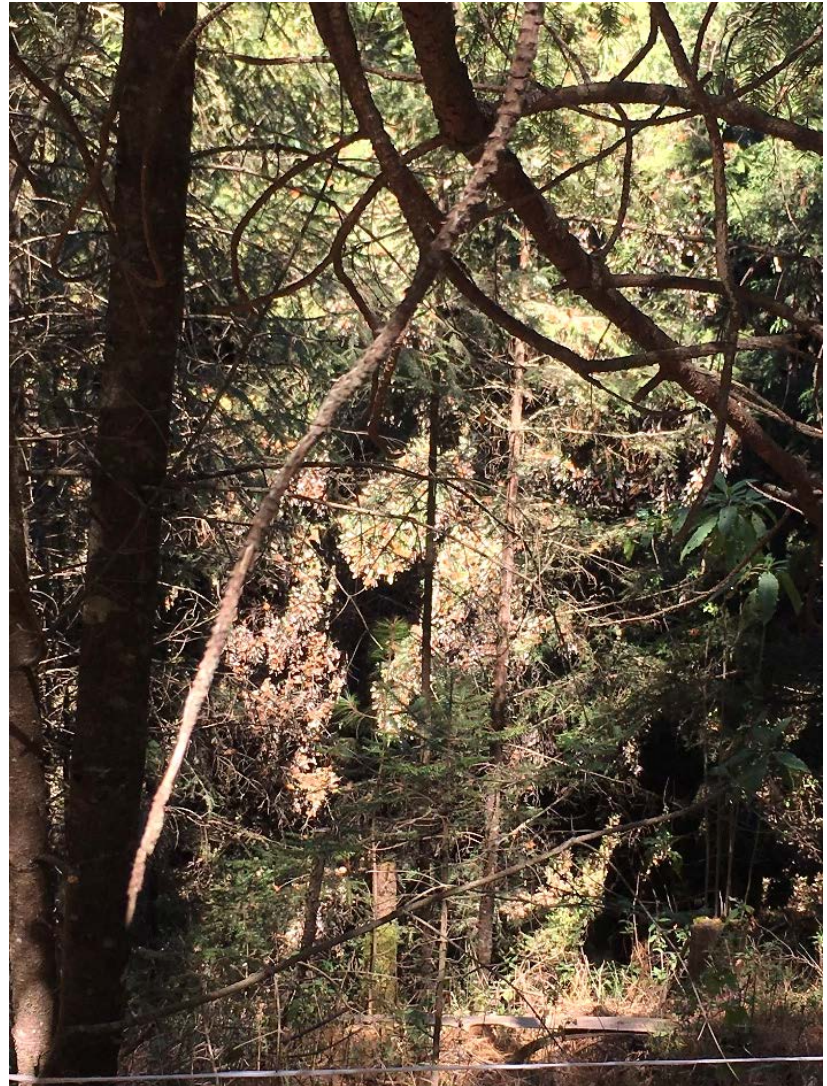
Cerro Pelon is a historic site: it's where scientists first confirmed that the butterflies that left Canada every year were the same ones that overwintered in the oyamel fir tree forests of the Sierra Madres. It is also, the most pristine of Mexico's butterfly roosts.

# While overwintering they are in semi-hibernation

- Thousands of Monarchs cluster together to stay warm on Oyamel Fir trees.
- On warmer days they will float down to puddles for water.



# Cerro Pelon





# Cerro Pelon



# Cerro Pelon



# El Rosario

- El Rosario

El Rosario has been the most populous of the butterflies' overwintering sites. Seeing millions of butterflies flutter back and forth from an open meadow to their treetop clusters is truly impressive. The hike up to the colony is mostly on a paved trail and it takes 30-45 minutes each way, depending on your speed and acclimation.



# El Rosario



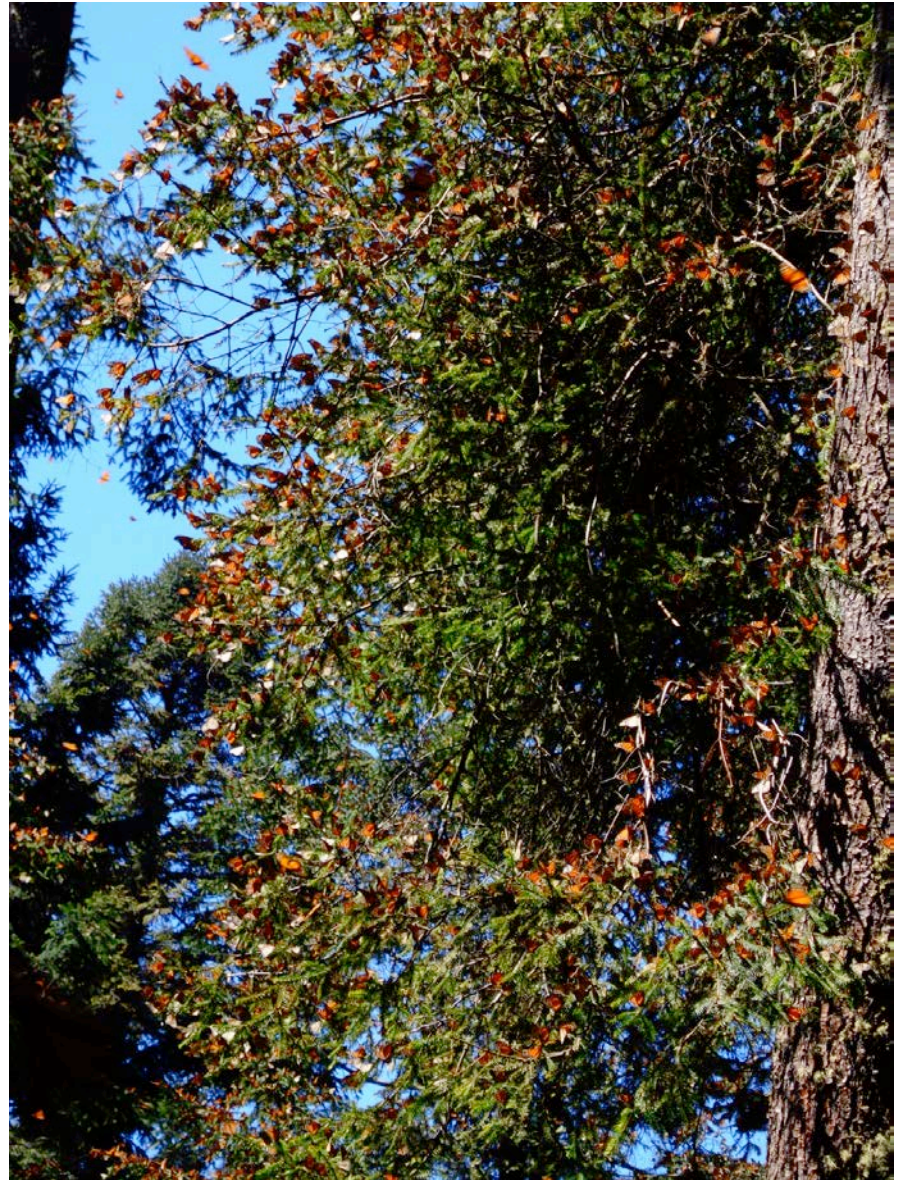
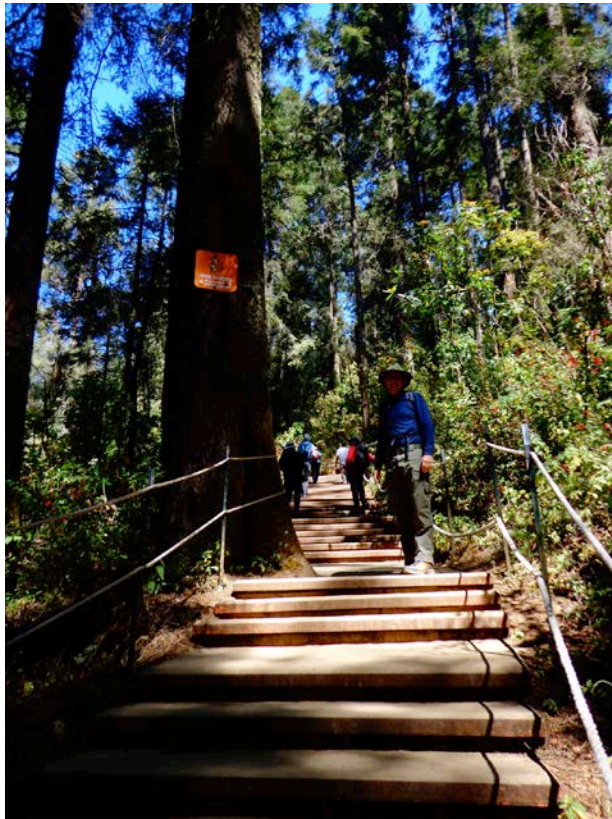


# El Rosario





# El Rosario





# El Rosario



# El Rosario Video



# Piedra Herrada

- Piedra Herrada

Piedra Herrada is close to the weekend resort town of Valle de Bravo. Often the colony is situated in such a way that you can get closer to the butterfly-laden trees. When we visited the butterflies were streaming down the highway to the preserve.



# Valle de Bravo



# Piedra Herrada





# Piedra Herrada





# The People





# The People



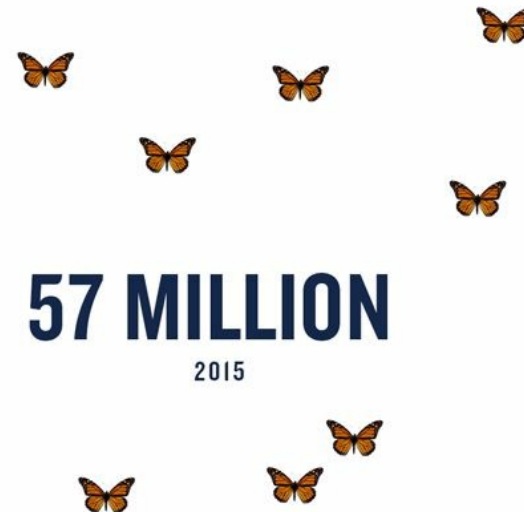
# The People





# Monarchs/Pollinators at Risk

- Numbers Drastically Dropped 90 percent - the lowest level since record keeping began 20 years ago.



NO MILKWEED, NO MONARCHS.  
[NRDC.ORG/SAVEMONARCHS](http://NRDC.ORG/SAVEMONARCHS)



# Why the decline?

- Loss of food supply
  - Farming use of pesticides
  - Urbanization
- Extreme drought
- Wildfires

# What you can do to help

- Include Milkweed in your home landscaping



# What you can do to help

- Include nectar plants in your home landscaping or container gardens





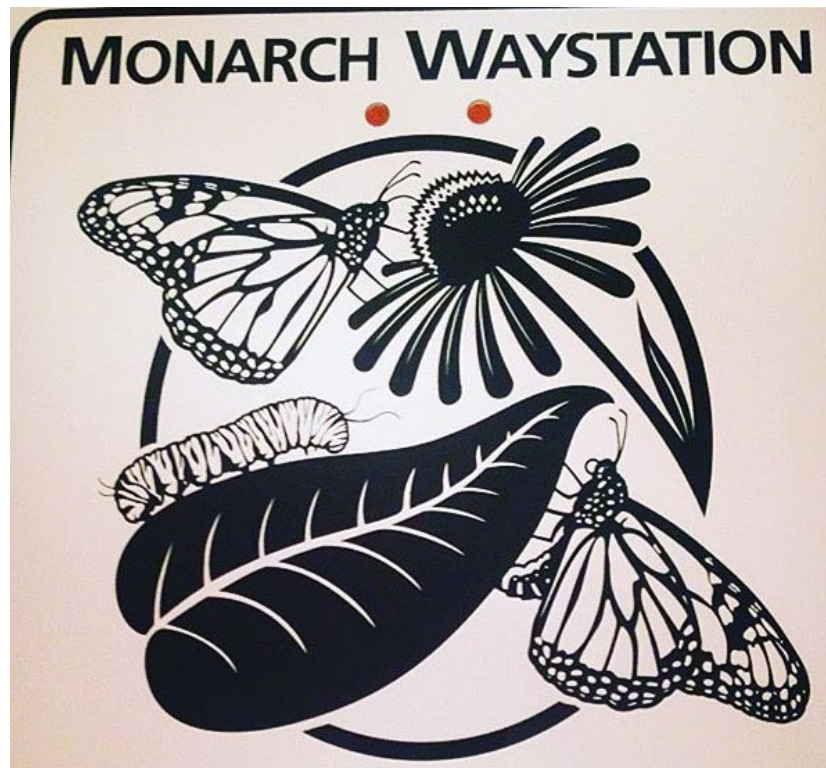
# What you can do to help

- Advocate for public areas to plant for pollinators



# What you can do to help

- Become a registered Monarch Waystation



# Birthday Butterfly Dance



# Bucket List Item Achieved



# Helpful Resources

- ◉ Monarch Watch [www.monarchwatch.org](http://www.monarchwatch.org)
- ◉ Journey North [www.journeynorth.org](http://www.journeynorth.org)
- ◉ Greenforest Prairie Monarch Waystation  
[https://www.facebook.com/Greenforest-Prairie\\_Monarch-Waystation](https://www.facebook.com/Greenforest-Prairie_Monarch-Waystation)
- ◉ J.M. Butterfly Bed and Breakfast  
<http://jmbutterflybnb.com/>